

Edexcel GCE

Geography

**Advanced Subsidiary
Unit 1: Global Challenges
Resource Booklet**

Wednesday 13 May 2009 – Afternoon

Time: 1 hour 30 minutes

Paper Reference

6GE01/01

Do not return the Resource Booklet with the question paper.

Turn over ►

M34486A

©2009 Edexcel Limited.

1/1/1/1



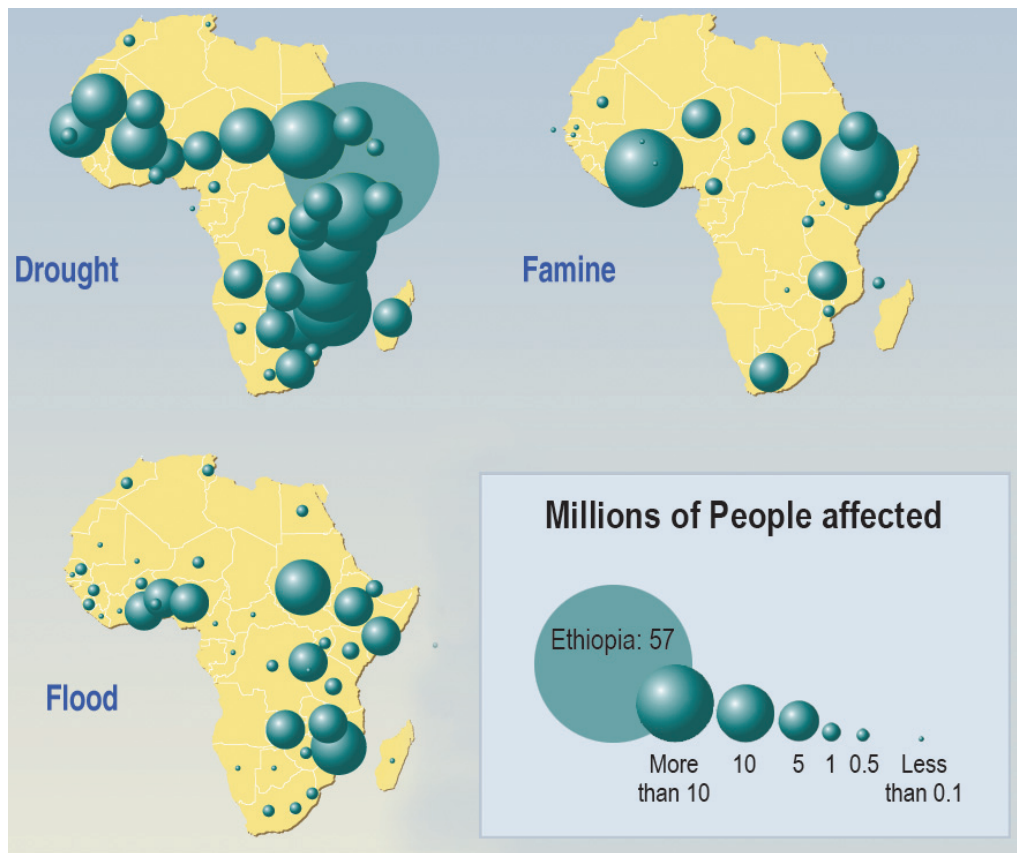
edexcel 
advancing learning, changing lives

SECTION A

Figure 1 The three components of risk

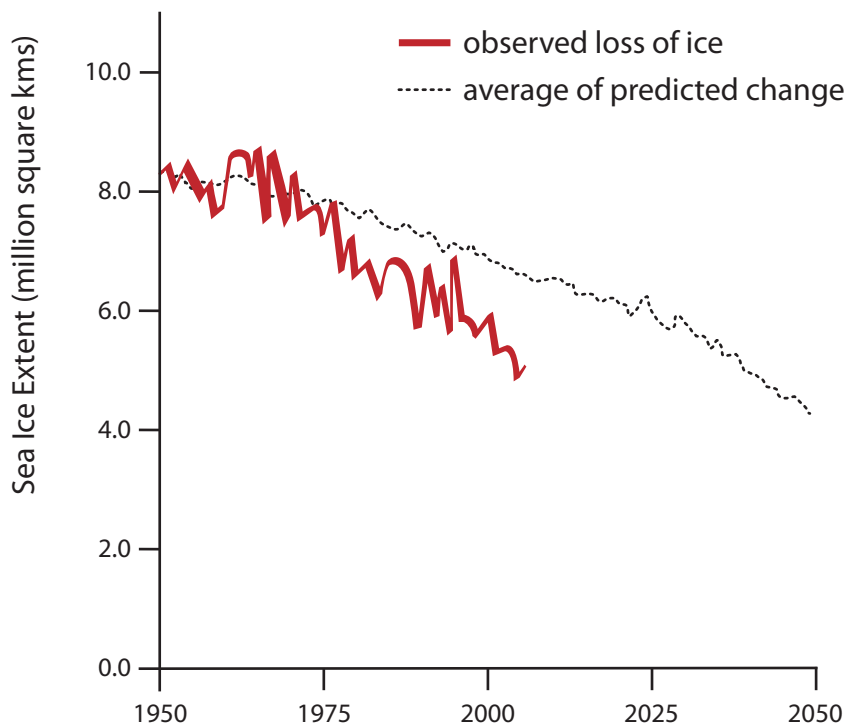


Figure 2 Population in Africa affected by drought, famine and flood (1979–2001)



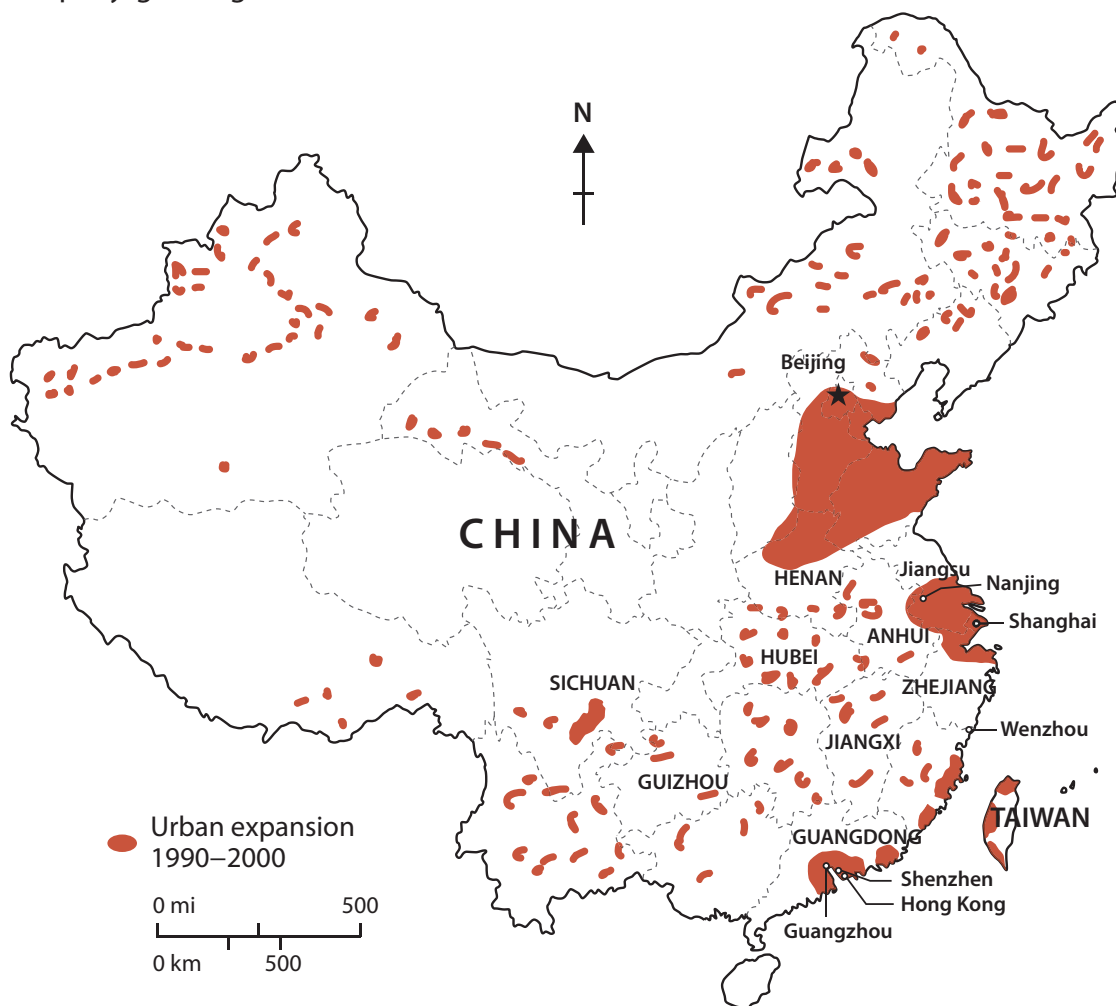
(Source: Delphine Digout & Philippe Rekacewicz; UNEP/GRID-Arendal)

Figure 3 Recorded and predicted changes in Arctic summer sea ice (1950–2050)



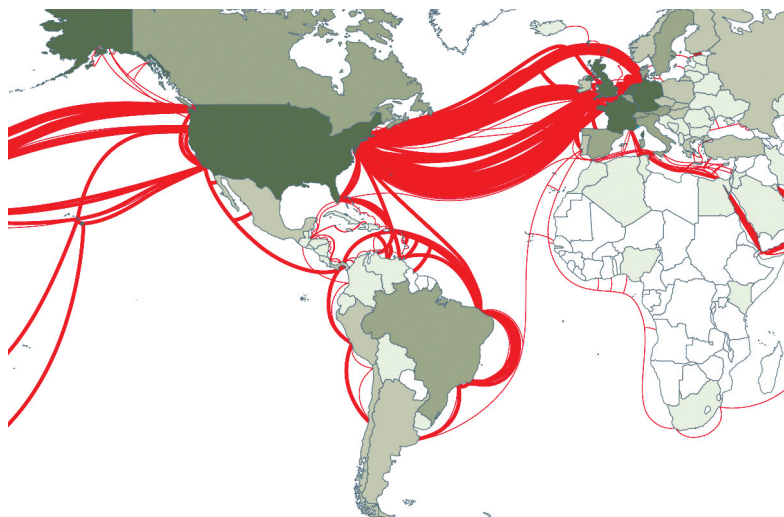
(Source: NSIDC data)

Figure 4 Rapidly-growing urban areas in China (1990–2000)



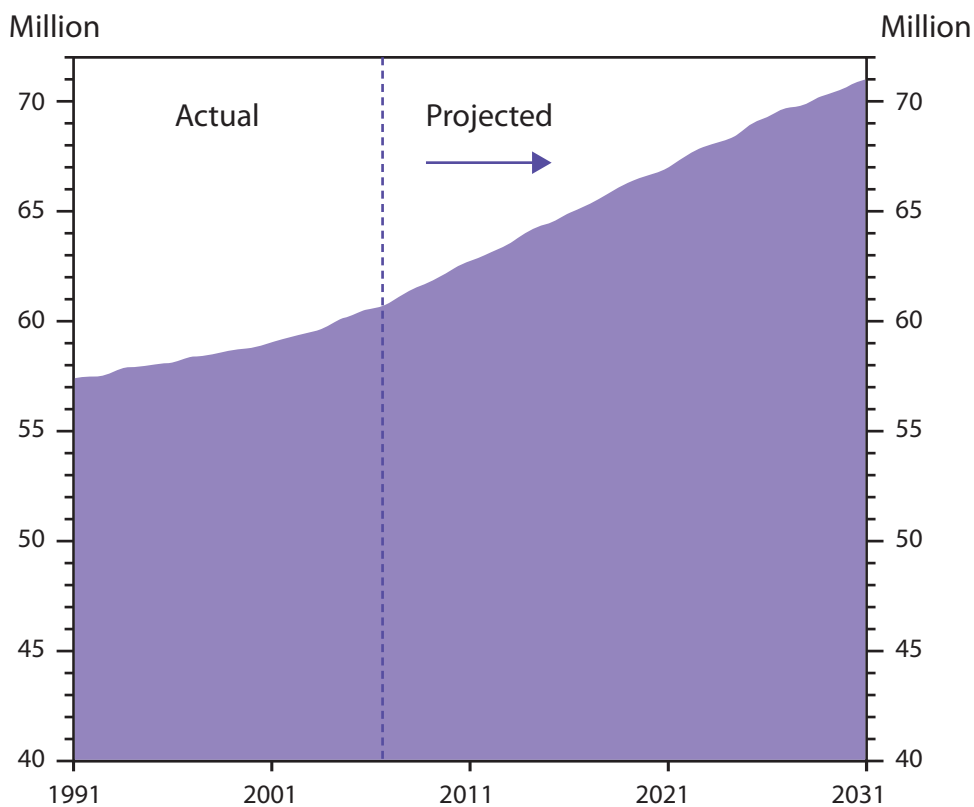
(Source: National Geographic magazine (2007))

Figure 5 Global internet connection
(width of lines proportional to number of connections)



(Source: image.guardian.co.uk)

Figure 6 Actual and projected population growth for the UK (1991–2031)



(Source: National Statistics, www.statistics.gov.uk/images/charts/1352.gif)

SECTION B

Figure 7 Significant earthquakes in world cities and conurbations

Year	City	Country	Fatalities	Economic losses (US\$m, original values)
2008	Dujiangyan, Sichuan	China	69,000	20,000
2003	Bam	Iran	30,000	1,000
1999	Istanbul, Izmet	Turkey	15,000	12,000
1999	Athens	Greece	143	4,200
1995	Kobe	Japan	6,340	100,000
1994	Northridge, L.A.	USA	61	44,000
1989	San Francisco	USA	68	10,000
1985	Mexico City	Mexico	9,500	4,000
1976	Tangshan	China	290,000	5,600
1972	Managua	Nicaragua	11,000	800
1971	San Fernando, L.A.	USA	65	553
1923	Tokyo	Japan	143,000	2,800
1906	San Francisco	USA	3,000	524

(Source: Munich Re NatCat SERVICE (2004))

Figure 8 Possible environmental impacts of world temperature rises

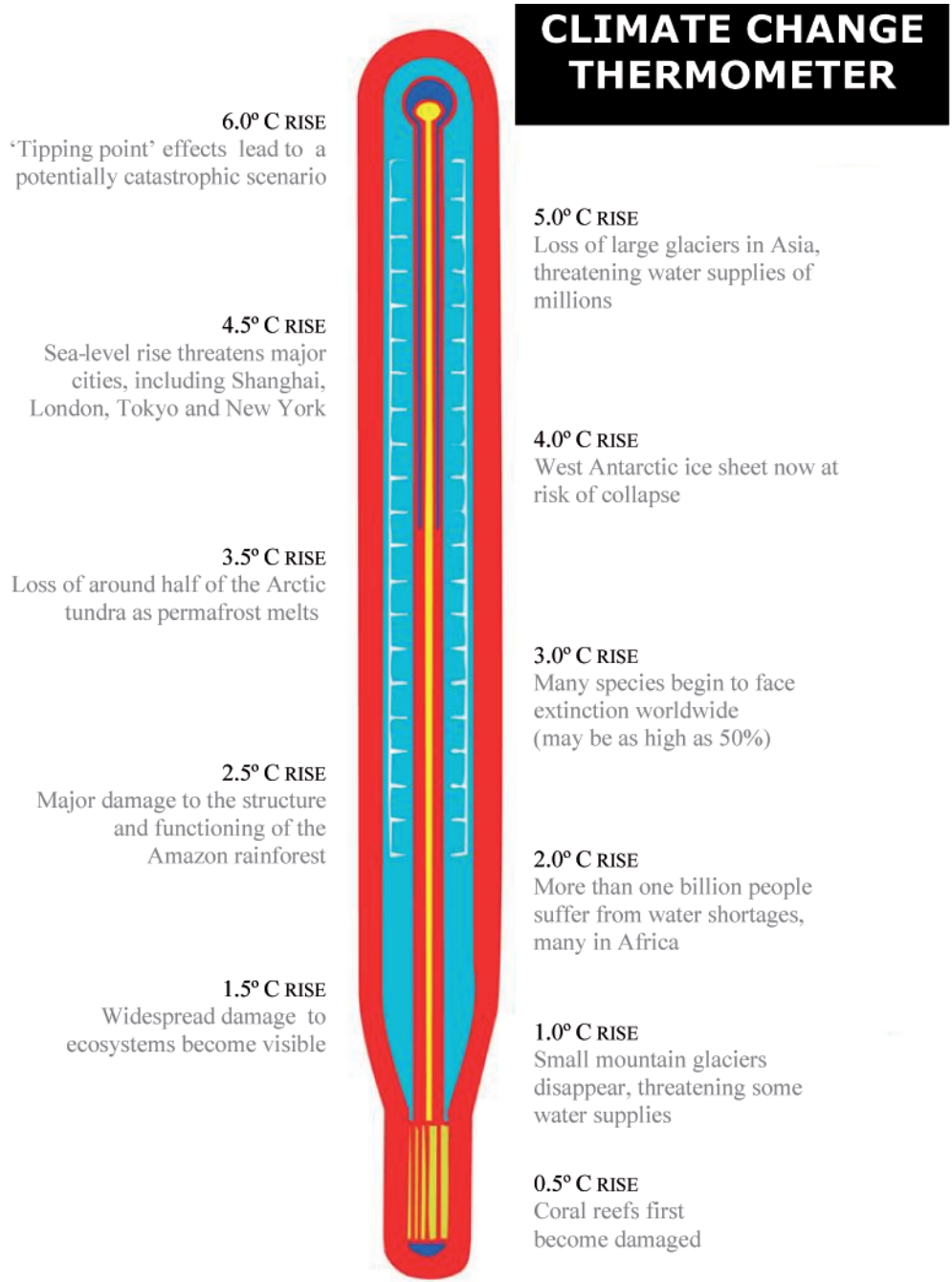


Figure 9 Newspaper cutting (Christmas 2007)



...although not everyone agrees

"I don't really want to see my customers using a lot less energy - that's not going to be good for our shareholders."

Chief Executive Officer of a large energy-providing company



"I don't plan to have any children, so it doesn't *really* bother me if the Earth's resources run out one day..."

A university student

"Why should I make sacrifices? I work hard and I like to enjoy myself. I don't want to cut back how much energy I use. Get the scientists to fix the problem, surely they can invent something to help us bring down carbon emissions."

A middle-aged professional



(Source: *The Independent on Sunday*, 23 December 2007)

Figure 10 A survey of family changes since 1960 conducted in an Essex (UK) school

	In 1961	In 2009
Average number of children per family	3.1	1.8
Average age of oldest living family member	78	89
Average age of mothers when giving birth to first child	24	28
Typical occupations of family members at that time	Car assembly Food processing Vehicle driving Insurance sales Shop work	Financial services Teaching Television production Medicine Shop work
Birthplace of oldest living relative at that time	Essex City of London Ireland	Essex North-west England India Bangladesh Jamaica

A class of Year 12 students interviewed their parents and grandparents. These are the results of that survey.