

Surname						Other Names					
Centre Number						Candidate Number					
Candidate Signature											

Leave blank

General Certificate of Education
 June 2003
 Advanced Subsidiary Examination



GEOGRAPHY (SPECIFICATION B)
Unit 3 The Human Options

GGB3

Friday 23 May 2003 Afternoon Session

No additional materials are required.

Time allowed: 1 hour

Instructions

- Use blue or black ink or ball-point pen. You may use pencil for maps, diagrams and graphs.
- Fill in the boxes at the top of this page.
- Answer **one** question, **either** Option S or T.
 Option S: Urban Change in the UK and the Wider World – page 2.
 Option T: The Historical Rural and Urban Landscapes – page 9.
- Do all rough work in this book. Cross through any work you do not want marked.
- Give sketch maps, diagrams and specific examples, where appropriate.
- If there is not enough space for your answer(s), use the extra page(s) at the end of the book. If you do this, make sure that you show the number(s) of the question(s) you are answering.

Information

- The maximum mark for this paper is 50.
- Mark allocations are shown in brackets.
- You are expected to use a calculator where appropriate.
- You will be assessed on your ability to use an appropriate form and style of writing, to organise relevant information clearly and coherently, and to use specialist vocabulary, where appropriate.
- The degree of legibility of your handwriting and the level of accuracy of your spelling, punctuation and grammar will also be taken into account.

For Examiner's Use			
Number	Mark	Number	Mark
S	X		
1			
T	X		
2			
Total (Column 1)	→		
Total (Column 2)	→		
TOTAL			
Examiner's Initials			

Answer the question on **either** Option S **or** Option T.

**OPTION S URBAN CHANGE IN THE UK AND
WIDER WORLD IN THE LAST 30 YEARS**

- 1** (a) (i) Add annotations to **Figure 1** below to show the characteristics of out-of-town retailing developments in the UK. *(7 marks)*



Figure 1

(ii) Outline the various attitudes of people **who live near** out-of-town retailing developments to these developments.

.....

.....

.....

.....

.....

.....

.....

.....

.....

.....

.....

.....

.....

.....

.....

.....

.....

.....

.....

.....

.....

.....

.....

(6 marks)

(b) What is meant by each of the following terms?

Suburbanisation:

.....

.....

.....

Counter-urbanisation:

.....

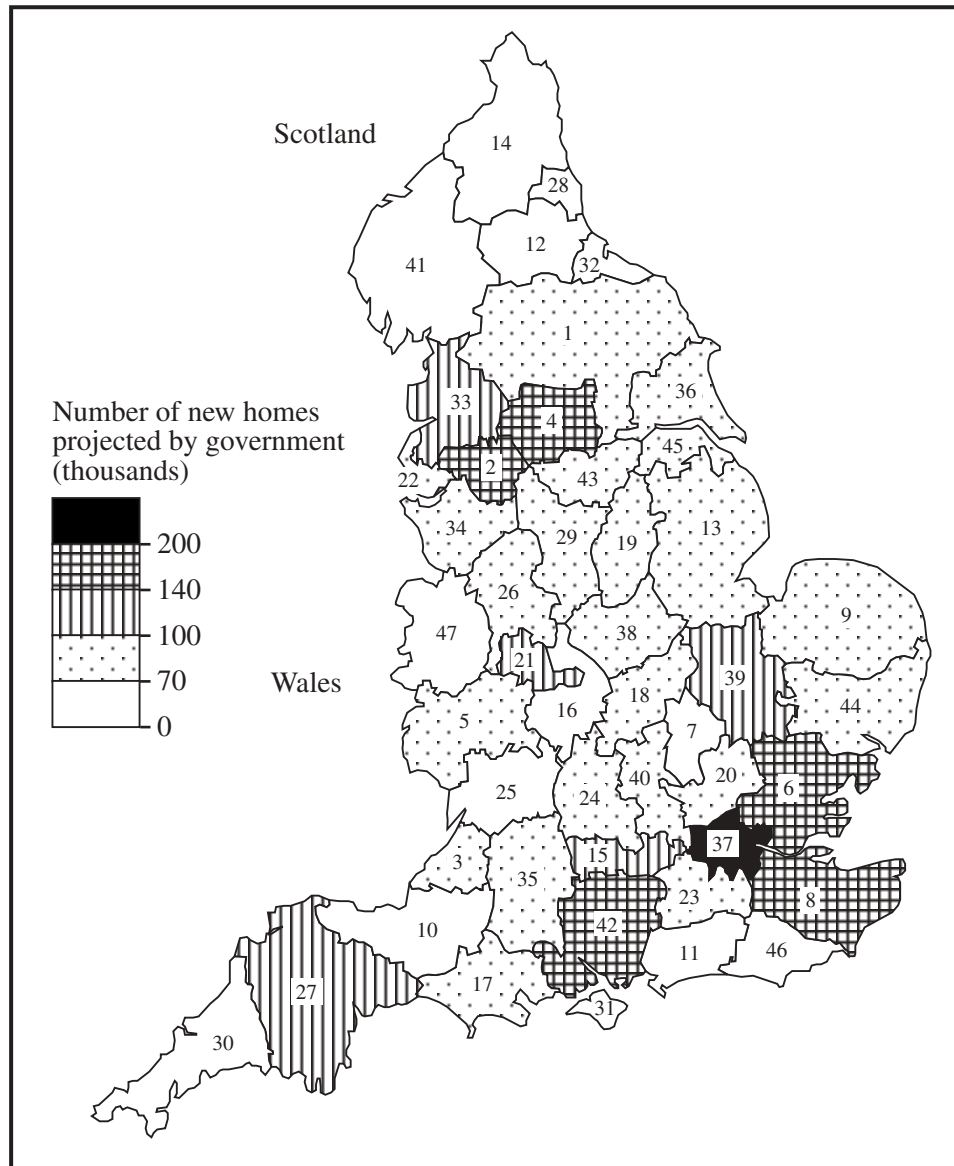
.....

.....

(6 marks)

QUESTION 1 CONTINUES ON THE NEXT PAGE

Turn over ►

(c) Study **Figure 2.****Projected new home building in England (1991–2016) by county**

- | | | | |
|---------------------------|----------------------|---------------------|---------------------|
| 1. North Yorkshire | 13. Lincolnshire | 25. Gloucestershire | 37. Greater London |
| 2. Greater Manchester | 14. Northumberland | 26. Staffordshire | 38. Leicestershire |
| 3. Avon | 15. Berkshire | 27. Devon | 39. Cambridgeshire |
| 4. West Yorkshire | 16. Warwickshire | 28. Tyne and Wear | 40. Buckinghamshire |
| 5. Hereford and Worcester | 17. Dorset | 29. Derbyshire | 41. Cumbria |
| 6. Essex | 18. Northamptonshire | 30. Cornwall | 42. Hampshire |
| 7. Bedfordshire | 19. Nottinghamshire | 31. Isle of Wight | 43. South Yorkshire |
| 8. Kent | 20. Hertfordshire | 32. Cleveland | 44. Suffolk |
| 9. Norfolk | 21. West Midlands | 33. Lancashire | 45. N. Lincolnshire |
| 10. Somerset | 22. Merseyside | 34. Cheshire | 46. East Sussex |
| 11. West Sussex | 23. Surrey | 35. Wiltshire | 47. Shropshire |
| 12. Durham | 24. Oxfordshire | 36. East Riding | |

Figure 2

- (i) Describe the distribution, shown in **Figure 2**, of those areas where **fewer** than 70 000 new homes are predicted to be built between 1991 and 2016.

.....

.....

.....

.....

.....

.....

.....

.....

.....

(4 marks)

- (ii) The United Kingdom Government would like to reduce counterurbanisation.

To what extent does the information given in **Figure 2** illustrate this?

.....

.....

.....

.....

.....

.....

.....

.....

.....

.....

.....

.....

.....

(5 marks)

QUESTION 1 CONTINUES ON THE NEXT PAGE

Turn over ►

- (d) (i) Why has urbanisation taken place in Less Economically Developed Countries (LEDCs) in the last 30 years?

.....

.....

.....

.....

.....

.....

.....

.....

.....

.....

.....

.....

.....

.....

.....

.....

.....

.....

.....

.....

.....

.....

.....

(8 marks)

- (ii) Outline the various attitudes of people who live in the rural areas of LEDCs to urbanisation.

.....

.....

.....

.....

.....

.....

.....

.....

.....

.....

.....

.....

.....

.....

.....

.....

.....

.....

(6 marks)

QUESTION 1 CONTINUES ON THE NEXT PAGE

Turn over ►

- (e) The regeneration of inner city areas can be achieved by a number of methods, including gentrification and the use of Housing Associations.

Choose **either** gentrification **or** Housing Associations.

Outline the ways in which your chosen method can regenerate inner cities, and comment on their success.

.....

.....

.....

.....

.....

.....

.....

.....

.....

.....

.....

.....

.....

.....

.....

.....

.....

.....

.....

.....

.....

(8 marks)



(ii) The number of visitors to all tourist attractions varies over time.

Study **Figure 3**.

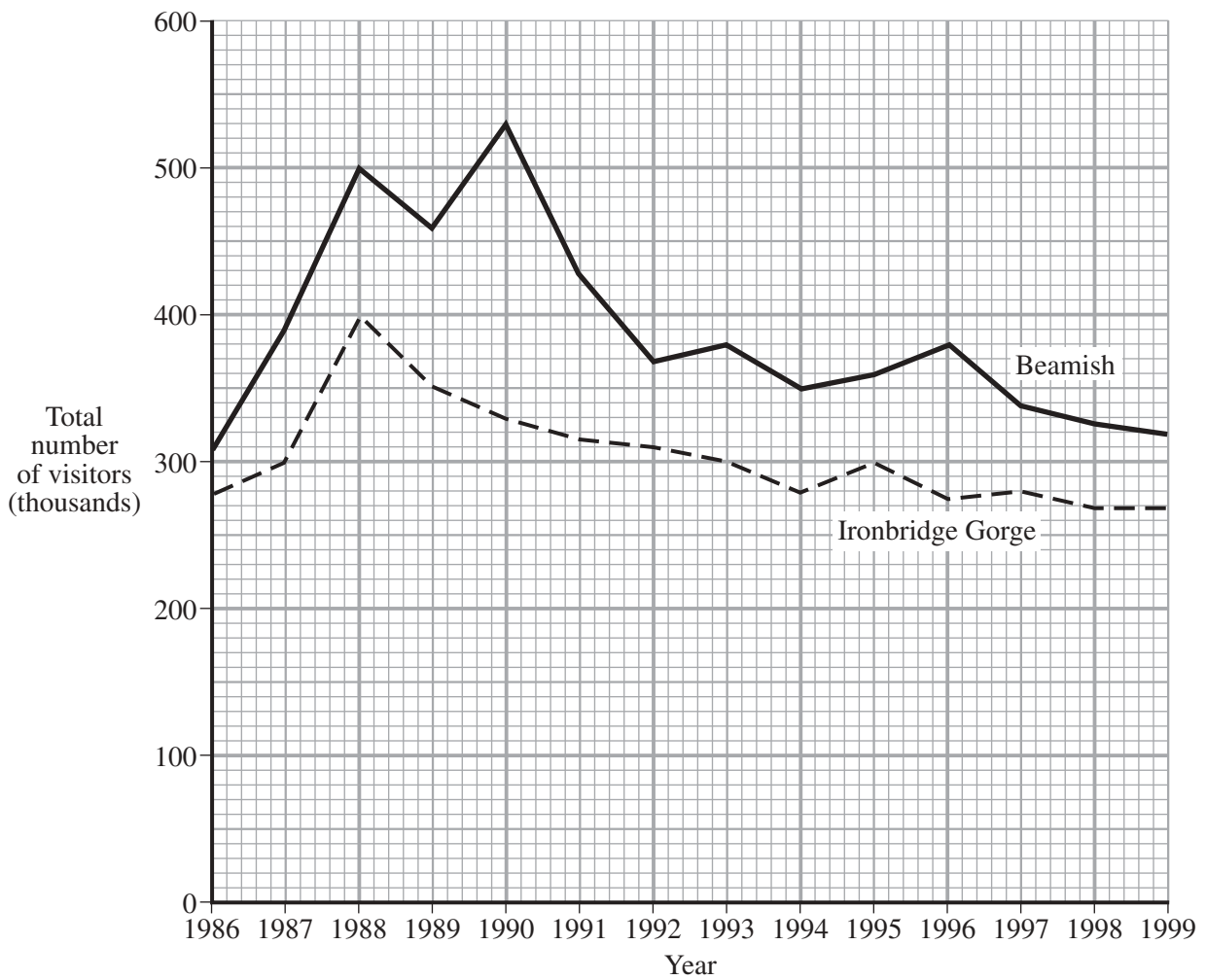


Figure 3

Compare the visitor numbers to the industrial heritage sites of Beamish and Ironbridge Gorge between 1986 and 1999 as shown in **Figure 3**.

.....

.....

.....

.....

.....

.....

.....

.....

.....

.....

.....

(5 marks)

QUESTION 2 CONTINUES ON THE NEXT PAGE

Turn over ►

(iii) Study **Figure 4**.

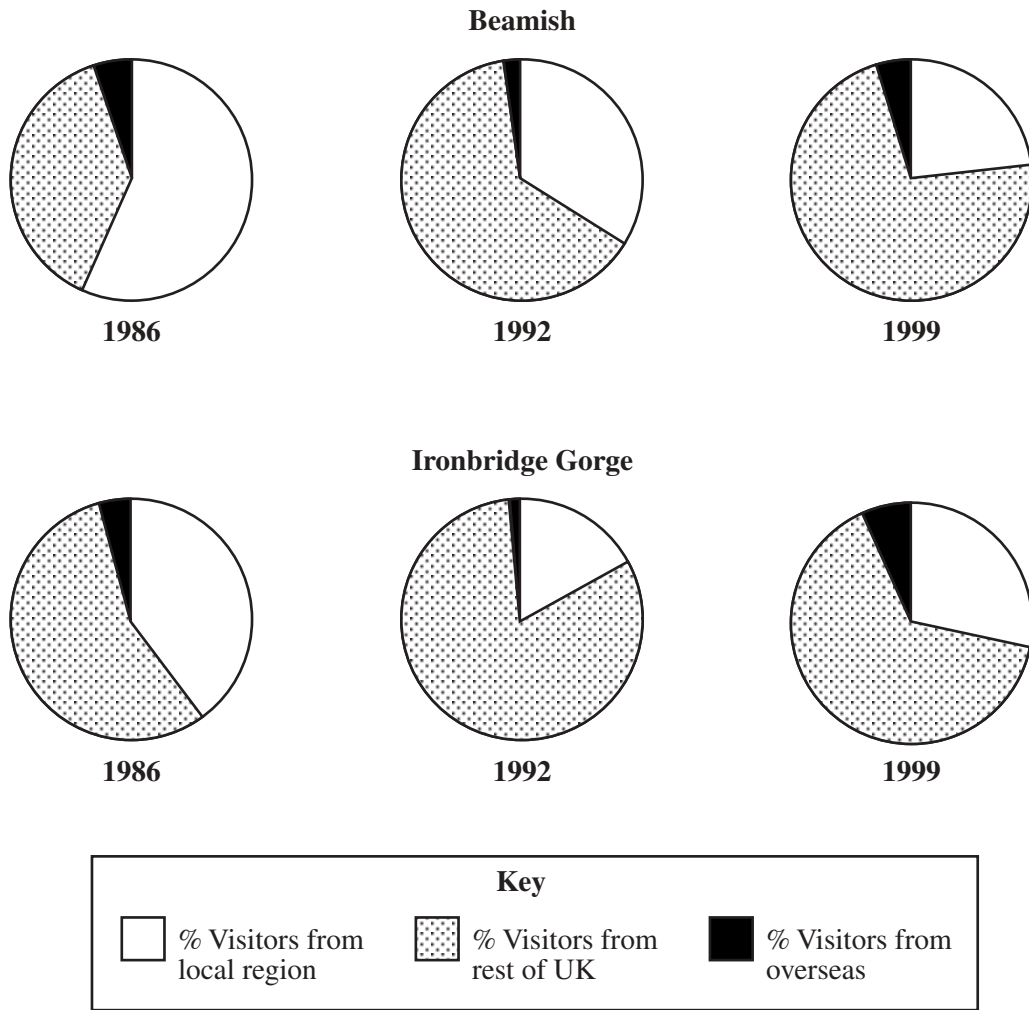


Figure 4

Compare the changes in the origin of visitors to the industrial heritage sites of Beamish and Ironbridge Gorge between 1986 and 1999 as shown in **Figure 4**.

.....

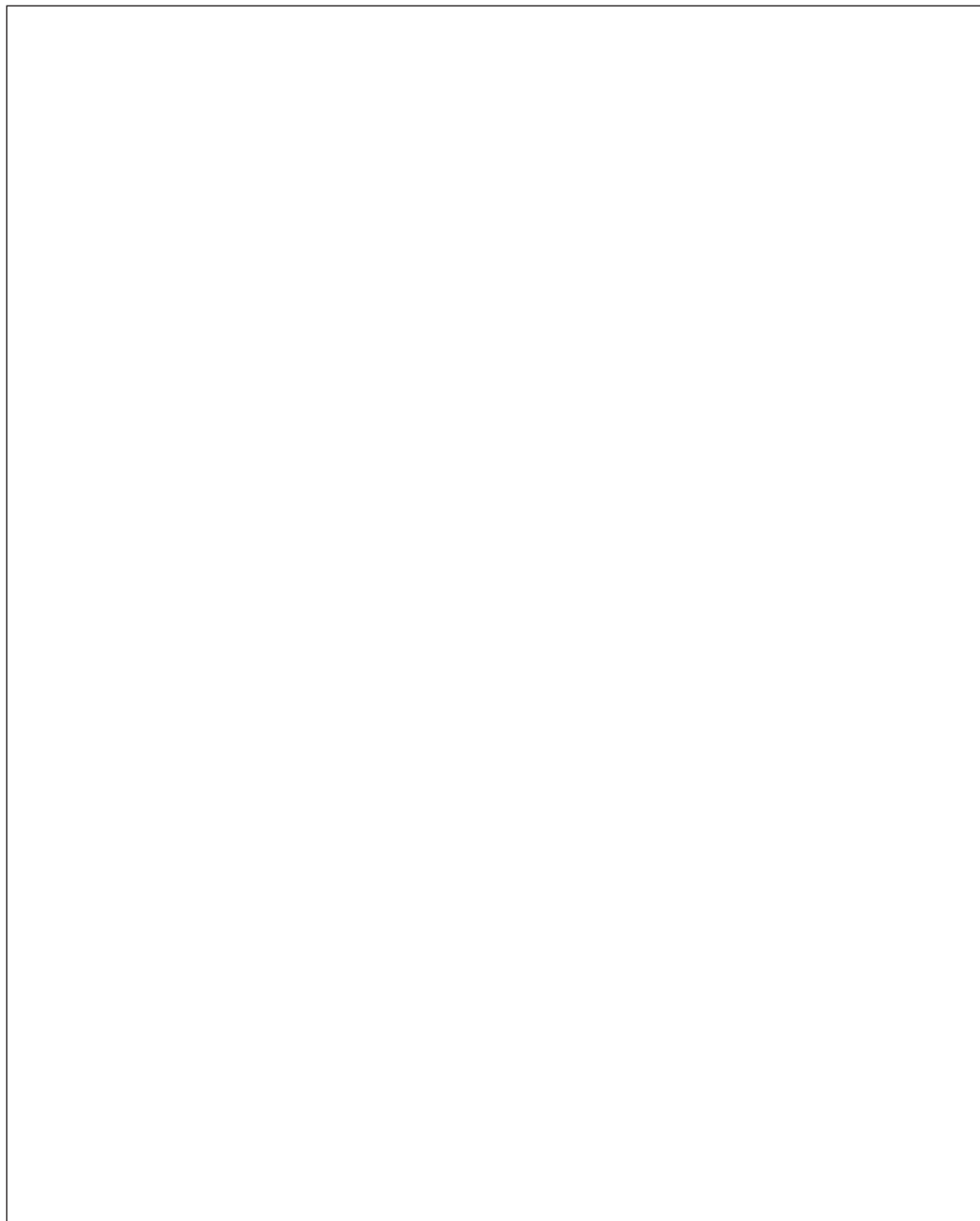
.....

.....

.....

.....

- (ii) Using an annotated diagram or sketch map **ONLY**, illustrate the main features of a rural landscape that has undergone enclosure.



(5 marks)

(c) Describe the characteristic features of the buildings of the Georgian/Regency period.

.....

.....

.....

.....

.....

.....

.....

.....

.....

.....

.....

.....

.....

.....

.....

.....

.....

.....

.....

.....

.....

.....

(8 marks)

QUESTION 2 CONTINUES ON THE NEXT PAGE

Turn over ►

