



**15 March – 15 May 2014**

**AS GCE FRENCH**

**F701 Speaking**

**ROLE PLAY A**



- This Candidate's Sheet is to be handed to the candidate 20 minutes in advance.

#### **INFORMATION FOR CANDIDATES**

- You should use the time available to study the instructions overleaf. You may make notes on this sheet, which you should take into the examination room with you.
- When the test begins you will be asked:
  - (i) to carry out the task described overleaf
  - (ii) to discuss with the examiner the sub-topic which you have prepared. The topic must refer to France or a French-speaking country.
- You may **not** use a dictionary.

There are two sections to this examination:

- A. Role-play (5-6 mins) [30 marks]
- B. Topic discussion (9-10 mins) [30 marks]

- Candidates may bring into the examination a maximum of one side of A4 notes for the Topic discussion.

**ROLE PLAY A – CANDIDATE’S SHEET**

**Note to the candidate:** You should begin by asking the two questions. The task can then be completed in the order you prefer. You should base your replies on the English text, but sometimes you will need to use your imagination and initiative to react to the examiner’s comments and questions.

**La Situation**

Vous habitez à Shrewsbury. Des Français font un séjour chez vous et vous discutez avec la mère / le père de la famille.

**La Tâche**

Son mari / sa femme va fêter son anniversaire en juillet et la mère / le père voudrait trouver le cadeau idéal.

**D’abord vous devez vous renseigner sur :**

- 1 les intérêts de son mari / sa femme**
- 2 la somme d’argent qu’il / elle voudrait dépenser**

Vous pensez que des tickets pour un tournoi de golf, l’Open britannique, lui conviendraient parfaitement. À l’aide d’un dépliant, vous donnerez des détails sur :

- l’histoire du tournoi
- le tournoi de nos jours
- le tournoi de cette année
- les tarifs et les informations pratiques
- les possibilités de restauration
- le site web

Au cours de la conversation vous discuterez aussi :

- de ce que vous pensez du sport
- de ce que vous aimeriez faire pour fêter votre anniversaire



The first championship took place in Scotland in October 1860. Only eight golfers took part. At first, the winner received a belt; later, a prize of £6 was introduced.

Now, the Open attracts the best players from around the world. Top amateurs play alongside the professionals and it is one of golf's most important championships.

The magnificent Royal Liverpool club in the north-west of England will host the 2014 championship from 17–20 July. It will be shown on TV in over 100 countries.

### Information

Adults £70

Buy tickets online or by telephone

Allow plenty of time to travel as the roads will be busy

Parking is available with places for disabled guests

### Eating

Choice of restaurants offering a range of prices and menus

Visitors may bring their own food to consume in designated areas

The website gives details of special prices for children, where to stay locally and future tournaments.

**Copyright Information**

OCR is committed to seeking permission to reproduce all third-party content that it uses in its assessment materials. OCR has attempted to identify and contact all copyright holders whose work is used in this paper. To avoid the issue of disclosure of answer-related information to candidates, all copyright acknowledgements are reproduced in the OCR Copyright Acknowledgements Booklet. This is produced for each series of examinations and is freely available to download from our public website ([www.ocr.org.uk](http://www.ocr.org.uk)) after the live examination series.

If OCR has unwittingly failed to correctly acknowledge or clear any third-party content in this assessment material, OCR will be happy to correct its mistake at the earliest possible opportunity.

For queries or further information please contact the Copyright Team, First Floor, 9 Hills Road, Cambridge CB2 1GE.

OCR is part of the Cambridge Assessment Group; Cambridge Assessment is the brand name of University of Cambridge Local Examinations Syndicate (UCLES), which is itself a department of the University of Cambridge.



**15 March – 15 May 2014**

**AS GCE FRENCH**

**F701 Speaking**

**ROLE PLAY B**



- This Candidate's Sheet is to be handed to the candidate 20 minutes in advance.

#### **INFORMATION FOR CANDIDATES**

- You should use the time available to study the instructions overleaf. You may make notes on this sheet, which you should take into the examination room with you.
- When the test begins you will be asked:
  - (i) to carry out the task described overleaf
  - (ii) to discuss with the examiner the sub-topic which you have prepared. The topic must refer to France or a French-speaking country.
- You may **not** use a dictionary.

There are two sections to this examination:

- A. Role-play (5-6 mins) [30 marks]
- B. Topic discussion (9-10 mins) [30 marks]

- Candidates may bring into the examination a maximum of one side of A4 notes for the Topic discussion.

**ROLE PLAY B – CANDIDATE’S SHEET**

**Note to the candidate:** You should begin by asking the two questions. The task can then be completed in the order you prefer. You should base your replies on the English text, but sometimes you will need to use your imagination and initiative to react to the examiner’s comments and questions.

**La Situation**

Un(e) collègue québécois(e) de votre mère est venu(e) dîner à la maison.

**La Tâche**

Vous discutez avec le / la collègue et vous découvrez qu’il / elle cherche des amis.

**D’abord vous devez vous renseigner sur :**

**1 la raison pour laquelle il / elle cherche des amis**

**2 les activités qu’il / elle aime**

Vous avez un dépliant sur les services d’une agence de rencontre et vous pensez que cela pourrait lui être utile. À l’aide du dépliant, vous donnerez des détails sur :

- l’histoire et l’objectif du club *Goodtimes*
- le fonctionnement du club
- les membres
- le choix de vêtements
- les abonnements
- la façon de rester en contact avec les membres

Au cours de la conversation vous discuterez aussi :

- de ce que vous aimez faire le soir
- de l’importance d’avoir des amis

## Feeling lonely? Join the *Goodtimes* friendship club

*Goodtimes*, set up by a group of friends, is now in its twentieth year. It aims to help singles of all ages to meet people in a safe environment, whether they are looking for new friends or a partner for life.

Every month, *Goodtimes* offers at least two social activities. One is always a restaurant evening, sampling different types of cuisine, and the second is either a disco or a games evening.



Club members come from all walks of life and range in age from 18 to 80. There is no selection process and everybody is welcome.

Members can wear what they like but many choose to dress elegantly.

Membership for both men and women costs only £25 per month and members must enrol for one year. They also need to pay for their meals and for any drinks.

Members receive a fortnightly email with forthcoming events and news.

**Copyright Information**

OCR is committed to seeking permission to reproduce all third-party content that it uses in its assessment materials. OCR has attempted to identify and contact all copyright holders whose work is used in this paper. To avoid the issue of disclosure of answer-related information to candidates, all copyright acknowledgements are reproduced in the OCR Copyright Acknowledgements Booklet. This is produced for each series of examinations and is freely available to download from our public website ([www.ocr.org.uk](http://www.ocr.org.uk)) after the live examination series.

If OCR has unwittingly failed to correctly acknowledge or clear any third-party content in this assessment material, OCR will be happy to correct its mistake at the earliest possible opportunity.

For queries or further information please contact the Copyright Team, First Floor, 9 Hills Road, Cambridge CB2 1GE.

OCR is part of the Cambridge Assessment Group; Cambridge Assessment is the brand name of University of Cambridge Local Examinations Syndicate (UCLES), which is itself a department of the University of Cambridge.





**15 March – 15 May 2014**

**AS GCE FRENCH**

**F701 Speaking**

**ROLE PLAY C**



- This Candidate's Sheet is to be handed to the candidate 20 minutes in advance.

#### **INFORMATION FOR CANDIDATES**

- You should use the time available to study the instructions overleaf. You may make notes on this sheet, which you should take into the examination room with you.
- When the test begins you will be asked:
  - (i) to carry out the task described overleaf
  - (ii) to discuss with the examiner the sub-topic which you have prepared. The topic must refer to France or a French-speaking country.
- You may **not** use a dictionary.

There are two sections to this examination:

- A. Role-play (5-6 mins) [30 marks]
- B. Topic discussion (9-10 mins) [30 marks]

- Candidates may bring into the examination a maximum of one side of A4 notes for the Topic discussion.

**ROLE PLAY C – CANDIDATE’S SHEET**

**Note to the candidate:** You should begin by asking the two questions. The task can then be completed in the order you prefer. You should base your replies on the English text, but sometimes you will need to use your imagination and initiative to react to the examiner’s comments and questions.

**La Situation**

Vous êtes en vacances chez des Français.

**La Tâche**

Le fils aîné va bientôt passer un an à Birmingham. Il aura besoin d’acheter des meubles en Angleterre. Vous en discutez avec le père / la mère.

**D’abord vous devez vous renseigner sur :**

- 1 la raison pour laquelle son fils va en Angleterre**
- 2 son logement en Angleterre**

Vous avez trouvé un dépliant sur un magasin de meubles. À l’aide du dépliant, vous donnerez des détails sur :

- le magasin Dandecott’s
- son stock
- la livraison
- sa situation
- les heures d’ouverture
- le site web

Au cours de la conversation vous discuterez aussi :

- des risques d’acheter en ligne
- de si vous voudriez travailler à l’étranger

# Dandecott's Furniture Warehouse

Dandecott's is Birmingham's newest and most exciting furniture store, offering second-hand furniture at bargain prices. It is ideal for students and young families who have a limited budget.

All items are carefully selected by an experienced team who carry out any little repairs necessary before items go on sale. Stock changes on a daily basis, so there is always something new. Whatever you want – top quality furniture or unusual colours – you will find it here.



Delivery is free of charge during the week, or available on a Saturday for a payment of £20. Delivery must be booked at the time of purchase.

Dandecott's is easy to find, just off the M6 near Aston Villa football stadium, and has customer parking for 85 cars.

**Opening hours:**  
**Monday to Saturday 09.30–20.00**  
**Closed Sundays and bank holidays**

Visit website to view items in store and details of how to buy online.

**Copyright Information**

OCR is committed to seeking permission to reproduce all third-party content that it uses in its assessment materials. OCR has attempted to identify and contact all copyright holders whose work is used in this paper. To avoid the issue of disclosure of answer-related information to candidates, all copyright acknowledgements are reproduced in the OCR Copyright Acknowledgements Booklet. This is produced for each series of examinations and is freely available to download from our public website ([www.ocr.org.uk](http://www.ocr.org.uk)) after the live examination series.

If OCR has unwittingly failed to correctly acknowledge or clear any third-party content in this assessment material, OCR will be happy to correct its mistake at the earliest possible opportunity.

For queries or further information please contact the Copyright Team, First Floor, 9 Hills Road, Cambridge CB2 1GE.

OCR is part of the Cambridge Assessment Group; Cambridge Assessment is the brand name of University of Cambridge Local Examinations Syndicate (UCLES), which is itself a department of the University of Cambridge.



**15 March – 15 May 2014**

**AS GCE FRENCH**

**F701 Speaking**

**ROLE PLAY D**



- This Candidate's Sheet is to be handed to the candidate 20 minutes in advance.

#### **INFORMATION FOR CANDIDATES**

- You should use the time available to study the instructions overleaf. You may make notes on this sheet, which you should take into the examination room with you.
- When the test begins you will be asked:
  - (i) to carry out the task described overleaf
  - (ii) to discuss with the examiner the sub-topic which you have prepared. The topic must refer to France or a French-speaking country.
- You may **not** use a dictionary.

There are two sections to this examination:

- A. Role-play (5-6 mins) [30 marks]
- B. Topic discussion (9-10 mins) [30 marks]

- Candidates may bring into the examination a maximum of one side of A4 notes for the Topic discussion.

**ROLE PLAY D – CANDIDATE’S SHEET**

**Note to the candidate:** You should begin by asking the two questions. The task can then be completed in the order you prefer. You should base your replies on the English text, but sometimes you will need to use your imagination and initiative to react to the examiner’s comments and questions.

**La Situation**

Un(e) ami(e) français(e) de votre père passe quelques jours chez vous. Il / Elle travaille à Cheltenham depuis quatre mois.

**La Tâche**

Un jour vous discutez avec l’ami(e). Son emploi à Cheltenham étant terminé, il / elle va bientôt rentrer en France et voudrait acheter un cadeau pour son hôte à Cheltenham.

**D’abord il faut vous renseigner sur :**

**1 la raison pour laquelle il / elle travaillait à Cheltenham**

**2 le type de cadeau qu’il / elle cherche**

Vous pensez qu’une liseuse électronique lui conviendrait parfaitement. À l’aide d’un dépliant, vous donnerez des détails sur :

- les utilisateurs d’un Kindle
- le Kindle et les vacances
- le Kindle Touch
- les livres électroniques
- les accessoires
- le site web

Au cours de la conversation vous discuterez aussi :

- de votre livre préféré
- de ce que vous pensez des nouvelles technologies de communication

# Kindle

Do you love reading but have no room for any more books? Then an E-reader is for you! The Kindle is suitable for all generations and, because of its price, it is a pleasure that everyone can have.

Take your entire collection of books with you when you relax on the beach this summer. Even in sunny weather, you will be able to read without difficulty. A Kindle slips into your luggage or your handbag and, weighing just 213g, won't cause you problems at the airport.



## Kindle Touch

- Download books in under 60 seconds
- Easy to use – just touch the screen

All your favourite titles are available to buy as e-books, and some classic novels will cost you nothing!

Choose from a range of accessories including lights and screen protectors.

See website for price and delivery details. If you are buying a Kindle as a gift, choose a special card online for your friend.

**Copyright Information**

OCR is committed to seeking permission to reproduce all third-party content that it uses in its assessment materials. OCR has attempted to identify and contact all copyright holders whose work is used in this paper. To avoid the issue of disclosure of answer-related information to candidates, all copyright acknowledgements are reproduced in the OCR Copyright Acknowledgements Booklet. This is produced for each series of examinations and is freely available to download from our public website ([www.ocr.org.uk](http://www.ocr.org.uk)) after the live examination series.

If OCR has unwittingly failed to correctly acknowledge or clear any third-party content in this assessment material, OCR will be happy to correct its mistake at the earliest possible opportunity.

For queries or further information please contact the Copyright Team, First Floor, 9 Hills Road, Cambridge CB2 1GE.

OCR is part of the Cambridge Assessment Group; Cambridge Assessment is the brand name of University of Cambridge Local Examinations Syndicate (UCLES), which is itself a department of the University of Cambridge.





**15 March – 15 May 2014**

**AS GCE FRENCH**

**F701 Speaking**

**ROLE PLAY E**



- This Candidate's Sheet is to be handed to the candidate 20 minutes in advance.

#### **INFORMATION FOR CANDIDATES**

- You should use the time available to study the instructions overleaf. You may make notes on this sheet, which you should take into the examination room with you.
- When the test begins you will be asked:
  - (i) to carry out the task described overleaf
  - (ii) to discuss with the examiner the sub-topic which you have prepared. The topic must refer to France or a French-speaking country.
- You may **not** use a dictionary.

There are two sections to this examination:

- A. Role-play (5-6 mins) [30 marks]
- B. Topic discussion (9-10 mins) [30 marks]

- Candidates may bring into the examination a maximum of one side of A4 notes for the Topic discussion.

**ROLE PLAY E – CANDIDATE’S SHEET**

**Note to the candidate:** You should begin by asking the two questions. The task can then be completed in the order you prefer. You should base your replies on the English text, but sometimes you will need to use your imagination and initiative to react to the examiner’s comments and questions.

**La Situation**

Vous êtes en vacances chez des Français.

**La Tâche**

Vous discutez avec le père / la mère de la famille, et vous découvrez que sa fille voudrait faire un stage en Angleterre.

**D’abord vous devez vous renseigner sur :**

**1 l’expérience professionnelle de sa fille**

**2 le commencement de son stage**

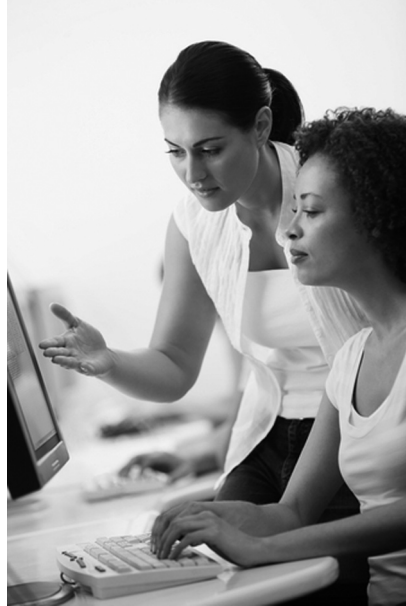
Vous avez un dépliant sur une agence qui aide les étrangers à trouver un stage, et vous pensez que cela pourrait l’intéresser. À l’aide du dépliant, vous donnerez des détails sur :

- l’histoire et l’objectif de l’agence
- les stages disponibles
- les informations personnelles nécessaires
- les services proposés
- le site web
- les conditions

Au cours de la conversation vous discuterez aussi :

- de ce que vous voudriez faire dans la vie et pourquoi
- du pays étranger où vous voudriez faire un stage et pourquoi

# Work in England



The Bellaron Agency was founded in 1990 by Bella and Ron, who have worked all around the world. Its aim is to find work experience for young people under the age of 26 who want to spend time in England and improve their English.

Whether you want to work for two weeks or four months, in a hospital or an office, Bellaron will organise a placement for you.

Applicants need to supply details of their previous experience, any qualifications which they hold and the sort of role they are looking for, so that Bellaron staff can consult their database of more than 10,000 employers.

Staff can help you obtain passports and visas, and give advice on the cheapest way of travelling, including discounts with some major airlines.

See the interactive website for job opportunities, the cost involved and how to apply.

Applicants must be over 18 and provide references.

**Copyright Information**

OCR is committed to seeking permission to reproduce all third-party content that it uses in its assessment materials. OCR has attempted to identify and contact all copyright holders whose work is used in this paper. To avoid the issue of disclosure of answer-related information to candidates, all copyright acknowledgements are reproduced in the OCR Copyright Acknowledgements Booklet. This is produced for each series of examinations and is freely available to download from our public website ([www.ocr.org.uk](http://www.ocr.org.uk)) after the live examination series.

If OCR has unwittingly failed to correctly acknowledge or clear any third-party content in this assessment material, OCR will be happy to correct its mistake at the earliest possible opportunity.

For queries or further information please contact the Copyright Team, First Floor, 9 Hills Road, Cambridge CB2 1GE.

OCR is part of the Cambridge Assessment Group; Cambridge Assessment is the brand name of University of Cambridge Local Examinations Syndicate (UCLES), which is itself a department of the University of Cambridge.



**15 March – 15 May 2014**

**AS GCE FRENCH**

**F701 Speaking**

**ROLE PLAY F**



- This Candidate's Sheet is to be handed to the candidate 20 minutes in advance.

#### **INFORMATION FOR CANDIDATES**

- You should use the time available to study the instructions overleaf. You may make notes on this sheet, which you should take into the examination room with you.
- When the test begins you will be asked:
  - (i) to carry out the task described overleaf
  - (ii) to discuss with the examiner the sub-topic which you have prepared. The topic must refer to France or a French-speaking country.
- You may **not** use a dictionary.

There are two sections to this examination:

- A. Role-play (5-6 mins) [30 marks]
- B. Topic discussion (9-10 mins) [30 marks]

- Candidates may bring into the examination a maximum of one side of A4 notes for the Topic discussion.

**ROLE PLAY F – CANDIDATE’S SHEET**

**Note to the candidate:** You should begin by asking the two questions. The task can then be completed in the order you prefer. You should base your replies on the English text, but sometimes you will need to use your imagination and initiative to react to the examiner’s comments and questions.

**La Situation**

Vous travaillez pour une agence de voyages qui organise des visites en Angleterre pour les Français.

**La Tâche**

Un jour vous discutez avec l’organisateur / l’organisatrice d’un groupe de Français. Ils vont visiter la région de Durham et ils voudraient faire des excursions pendant leur séjour. Il / elle est venu(e) en Angleterre pour discuter du programme.

**D’abord il faut vous renseigner sur :**

**1 le nombre de visiteurs dans son groupe**

**2 les intérêts du groupe**

Vous pensez qu’une visite à la cascade de High Force intéresserait le groupe. À l’aide du dépliant, vous donnerez des détails sur :

- la cascade
- sa situation
- l’accès à la cascade
- la sécurité
- les informations pour les visiteurs handicapés
- la possibilité de faire des achats

Au cours de la conversation vous discuterez aussi :

- d’un site touristique que vous avez particulièrement aimé, et pourquoi
- des moyens d’encourager le tourisme

## High Force Waterfall



Although not the highest, High Force waterfall, at 21.5 metres, is one of the most beautiful and spectacular in the country.

It is situated in picturesque countryside, just outside the historic town of Middleton-in-Teesdale, about 20 miles west of a medieval castle. Tourists often choose to visit both to make an exciting day out.

The waterfall is reached by a woodland walk of about 500 metres. There are several benches along the route where you can rest, admire the view or take photos.

### Safety

Water can be dangerous

Dogs must be controlled

Children must be supervised  
at all times

### Disabled Visitors

Parking spaces provided  
nearer the site

Visitors advised to bring a  
companion to help

Some parts of the visit will  
be inaccessible

The gift shop is open from Easter until the end of October and sells a variety of high-quality souvenirs at reasonable prices.

**Copyright Information**

OCR is committed to seeking permission to reproduce all third-party content that it uses in its assessment materials. OCR has attempted to identify and contact all copyright holders whose work is used in this paper. To avoid the issue of disclosure of answer-related information to candidates, all copyright acknowledgements are reproduced in the OCR Copyright Acknowledgements Booklet. This is produced for each series of examinations and is freely available to download from our public website ([www.ocr.org.uk](http://www.ocr.org.uk)) after the live examination series.

If OCR has unwittingly failed to correctly acknowledge or clear any third-party content in this assessment material, OCR will be happy to correct its mistake at the earliest possible opportunity.

For queries or further information please contact the Copyright Team, First Floor, 9 Hills Road, Cambridge CB2 1GE.

OCR is part of the Cambridge Assessment Group; Cambridge Assessment is the brand name of University of Cambridge Local Examinations Syndicate (UCLES), which is itself a department of the University of Cambridge.