

Centre Number						Candidate Number				
Surname										
Other Names										
Candidate Signature										

For Examiner's Use	
Examiner's Initials	
Question	Mark
1	
2	
3	
4	
5	
6	
7	
8	
9	
10	
TOTAL	



General Certificate of Education  
Advanced Level Examination  
June 2014

# Critical Thinking

# CRIT4

## Unit 4 Reasoning and Decision Making

Tuesday 17 June 2014 9.00 am to 10.30 am

**For this paper you must have:**

- a copy of the Pre-release Case Study Source Material (enclosed)
  - Unseen Source Material (enclosed)
- You may use a calculator.

**Time allowed**

- 1 hour 30 minutes

**Instructions**

- Use black ink or black ball-point pen.
- Fill in the boxes at the top of this page.
- Answer **all** questions in the spaces provided. Do not write outside the box around each page or on blank pages.
- Do all rough work in this book. Cross through any work you do not want to be marked.

**Information**

- The marks for questions are shown in brackets.
- The maximum mark for this paper is 70.
- This paper consists of three sections.
  - Section A:** questions based on statistical information.
  - Section B:** questions based on the pre-release sources.
  - Section C:** questions based on **Document J** and a final essay question.
- You will be marked on your ability to
  - use good English
  - organise information clearly
  - use specialist vocabulary where appropriate.

**Advice**

- The recommended time allocation for this unit is as follows:
  - Section A: 20-25 minutes
  - Section B: 10-15 minutes
  - Section C: 50-60 minutes (including reading time for Document J).



J U N 1 4 C R I T 4 O 1

**Section A**

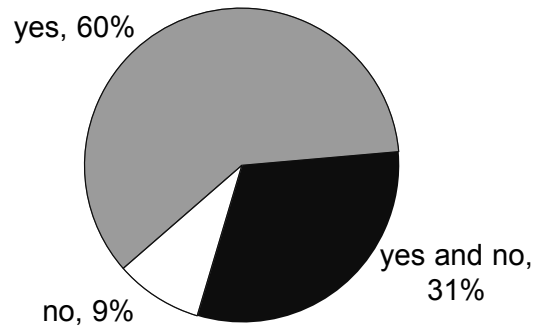
Answer **Questions 1 to 3** in the spaces provided.

There are **15 marks** available for this section.

**Question 1** refers to the statistical information below. The information is taken from a poll on a website called Quibblo.

**DO KIDS HAVE TOO MUCH HOMEWORK?**

34 Responses



Source: [www.Quibblo.com/quiz](http://www.Quibblo.com/quiz)



**1** You are a student who is part of a group that is trying to convince your school to set less homework. You are trying to gather information to convince your head teacher. Your friend has found this poll on the above website, and has suggested you use it to convince your head teacher that you should have less homework.

Suggest **two** reasons why the results of this poll might **not** convince your head teacher to set less homework.

**[4 marks]**

.....

.....

.....

.....

.....

.....

.....

.....

.....

.....

.....

<b>4</b>

**Turn over for the next question**

**Turn over ▶**



**Questions 2 and 3** are based on the following scenario.

Imagine you are the head teacher of a school in the UK.

You are going to hold a meeting for the parents of your students, in order to discuss the school's homework policy. You have sent letters home with students, with a reply slip for their parents to complete. The slip asks parents whether they can attend the meeting if it was held on Tuesday evening and/or Thursday evening.

You want to have as many parents at the meeting as possible.

500 parents have replied to say they can attend on Tuesday evening, and 1000 have replied to say they can attend on Thursday evening.

However, in your 10 years' experience in this school, you are aware that parents do not always turn up when they say they will, especially if it is raining. You have also observed that whether or not rain keeps parents at home also depends on whether they are asked to bring their children with them to the meeting, or whether they are asked to leave their children at home.

Statistical analysis of parent attendance at meetings over the past 10 years reveals the following:

- if parents are asked to bring their children with them, and it is dry, 80% of parents who have said they will attend do so.
- if parents are asked to bring their children with them, and it is raining, 30% of parents who have said they will attend do so.
- if parents are asked to leave their children at home, and it is dry, 60% of parents who have said they will attend do so.
- if parents are asked to leave their children at home, and it is raining, 50% of parents who have said they will attend do so.

You have checked the weather forecast and found out the following:

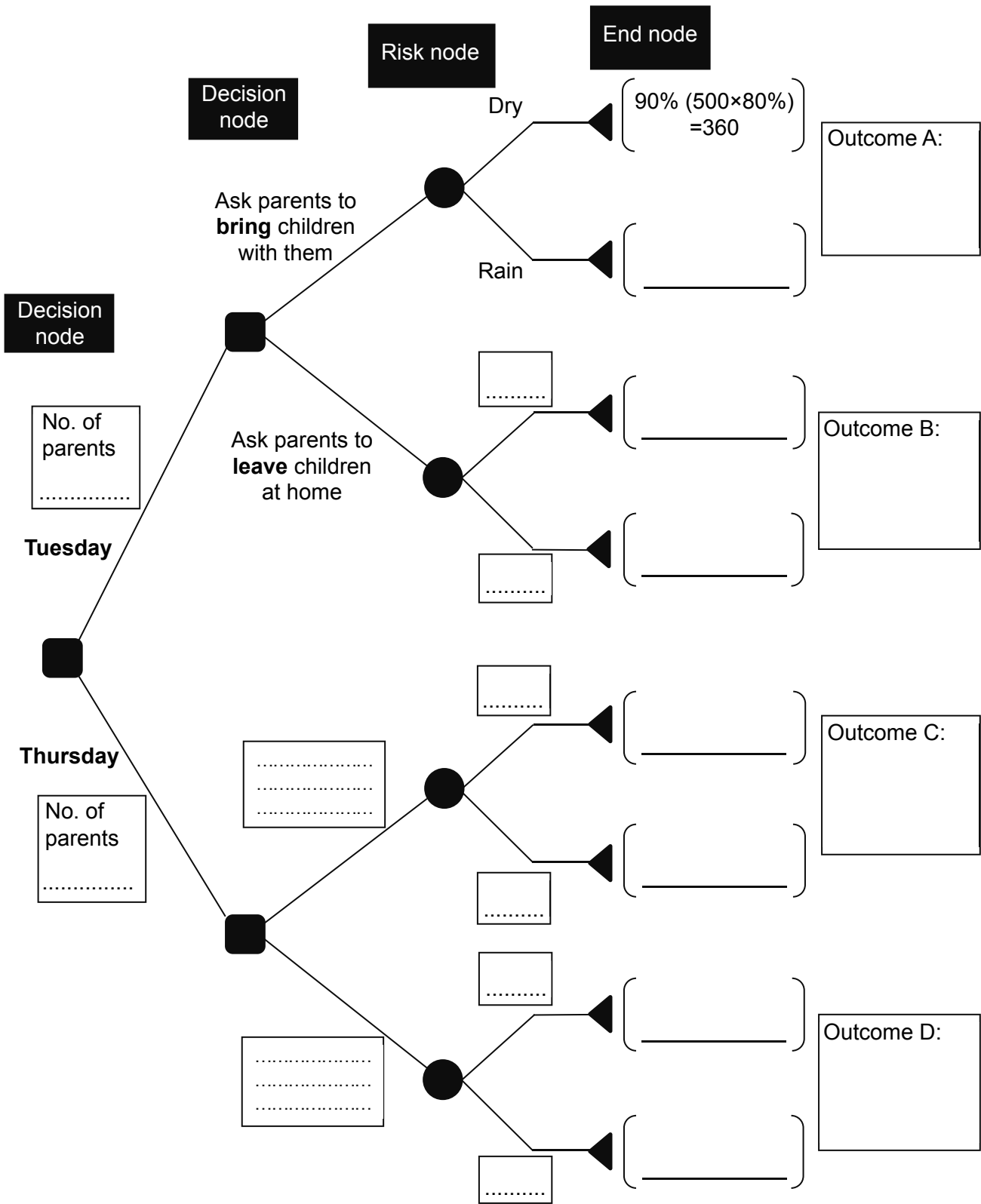
- the chance of it raining on Tuesday is 10%.
- the chance of it raining on Thursday is 40%.



2 Complete the decision tree diagram below using the information on page 4, and calculate the probable outcomes in terms of numbers of parents likely to attend.

For example, Outcome A is the likely attendance if the decision is to have the meeting on the Tuesday and the parents are asked to bring children.

[9 marks]



Turn over ▶



**3** Use the diagram to judge whether to hold the meeting on Tuesday or Thursday, and whether to ask parents to bring their children with them or to leave their children at home.

State your judgement and a reason for it, based only on your calculated outcomes.

**[2 marks]**

.....

.....

.....

.....

.....

.....

<b>2</b>





**Question 5** relates to **Document B**.

Re-read **Document B**. Then read the following comments, which were made online in response to the article in **Document B**.

**Joani**

25/12/2012, 7.20 pm

Since when did primary schools start giving out homework? We never had it in the sixties. In fact, I never had any until I went to Grammar school in '71. Didn't stop me getting a degree.

Isn't homework for six and seven year olds a bit over the top? When are the poor little souls supposed to go out to play?

**erikbloodaxe**

24/12/2012, 5.04 am

I agree with Hollande. Never thought I'd say that. Homework for primary school kids is cruel and pointless. It only came in here sometime between my schooldays (in the 1960s) and my kids' (in the 1990s).

**moonunit**

21/12/2012, 2.48 pm

Hollande is more of an imbecile than I originally thought. Banning homework because some parents don't help their kids with it, regardless of wealth, is a hunt for the lowest common denominator. It is equalising down, rather than equalising up, even for an avowed socialist like Hollande.

- 5** Which **one** of the three commenters – Joani, erikbloodaxe or moonunit – gives the most relevant response to the article?

Explain the reason for your choice and state briefly why the others are less relevant with reference to the text of **Document B**.

**[5 marks]**

.....  
.....  
.....  
.....  
.....  
.....  
.....  
.....  
.....





.....

.....

.....

.....

.....

.....

.....

5

**Turn over for the next question**

**Turn over ▶**





**Section C**

Answer **Questions 7 to 10** in the spaces provided.

There are **38 marks** available for this section.

Study **Document J**, provided on the insert, **Unseen Source Material**.

**Questions 7, 8 and 9** relate to **Document J**.

**7** In **paragraph 4**, the author, Hilary Wilce writes:

‘The fuss stems from a book due out in the spring in which the American academic Alfie Kohn argues that the returns on homework are too small to warrant the family stress it causes, and that children would be better off having fun after school.’

What assumption does Kohn’s argument make, according to Wilce’s above description of it?

**[2 marks]**

.....  
.....  
.....  
.....  
.....  
.....

2

**8** Does Wilce agree or disagree with Kohn’s conclusion that homework should be abolished?

Support your answer with references to the text.

**[4 marks]**

.....  
.....  
.....  
.....

**Turn over ▶**







A large rectangular box containing 25 horizontal dotted lines for writing.



A large rectangular area containing 25 horizontal dotted lines, intended for writing.

Turn over ▶



Area with horizontal dotted lines for writing.

26

**END OF QUESTIONS**

