



UNIVERSITY OF CAMBRIDGE INTERNATIONAL EXAMINATIONS
General Certificate of Education
Advanced Subsidiary Level and Advanced Level

CANDIDATE
NAME

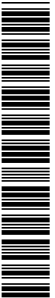
CENTRE
NUMBER

--	--	--	--	--

CANDIDATE
NUMBER

--	--	--	--

* 8 2 7 1 2 3 0 8 6 2 *



COMPUTING

9691/23

Paper 2

October/November 2012

2 hours

Candidates answer on the Question Paper.

No additional materials are required.

READ THESE INSTRUCTIONS FIRST

Write your Centre number, candidate number and name on all the work you hand in.

Write in dark blue or black pen.

You may use a soft pencil for any diagrams, graphs or rough working.

Do not use staples, paper clips, highlighters, glue or correction fluid.

DO NOT WRITE IN ANY BARCODES.

Answer **all** questions.

At the end of the examination, fasten all your work securely together.

The number of marks is given in brackets [] at the end of each question or part question.

This document consists of **13** printed pages and **3** blank pages.



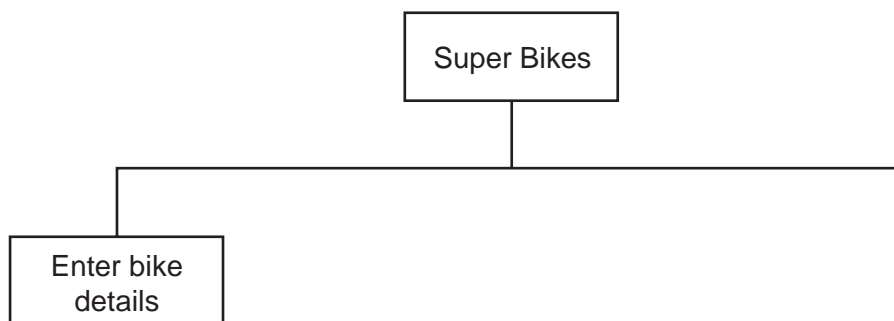
Soni works for a software house which has been asked to design software for Super Bikes, a company that specialises in hiring out motorbikes.

*For
Examiner's
Use*

1 Soni decides on the main tasks:

- enter bike details
 - bike specification
 - service history
 - hire rates
- enter bike hire details

(a) Complete the structure diagram showing these tasks.



[2]

(b) Entering hire rate details has two subtasks:

- input daily rates
- input weekly rates

Add these to the structure diagram in part (a).

[1]

- (c) The type of each bike is also recorded. The intention of this pseudocode is to allow only trial, scooter and road as valid bike types.

```
INPUT BikeType
IF ((BikeType = "trial") AND (BikeType = "scooter"))
    OR (BikeType = "road")
    THEN
        OUTPUT BikeType " is valid"
    ELSE
        OUTPUT "Invalid"
ENDIF
```

State the output when the BikeType input is:

- (i) scrambler
- (ii) trial
- (iii) road [3]

- (d) Rewrite the line in the pseudocode in part (c) which needs changing in order to correctly validate bike types.

.....
..... [1]

(ii) Explain why 487BK is an invalid bike registration.

.....
.....

State the line number of your code in part (e)(i) which detects that it is invalid.

Line Number [2]

(f) The code in part (e)(i) will be subject to black box testing and white box testing.

Explain how this testing will be carried out.

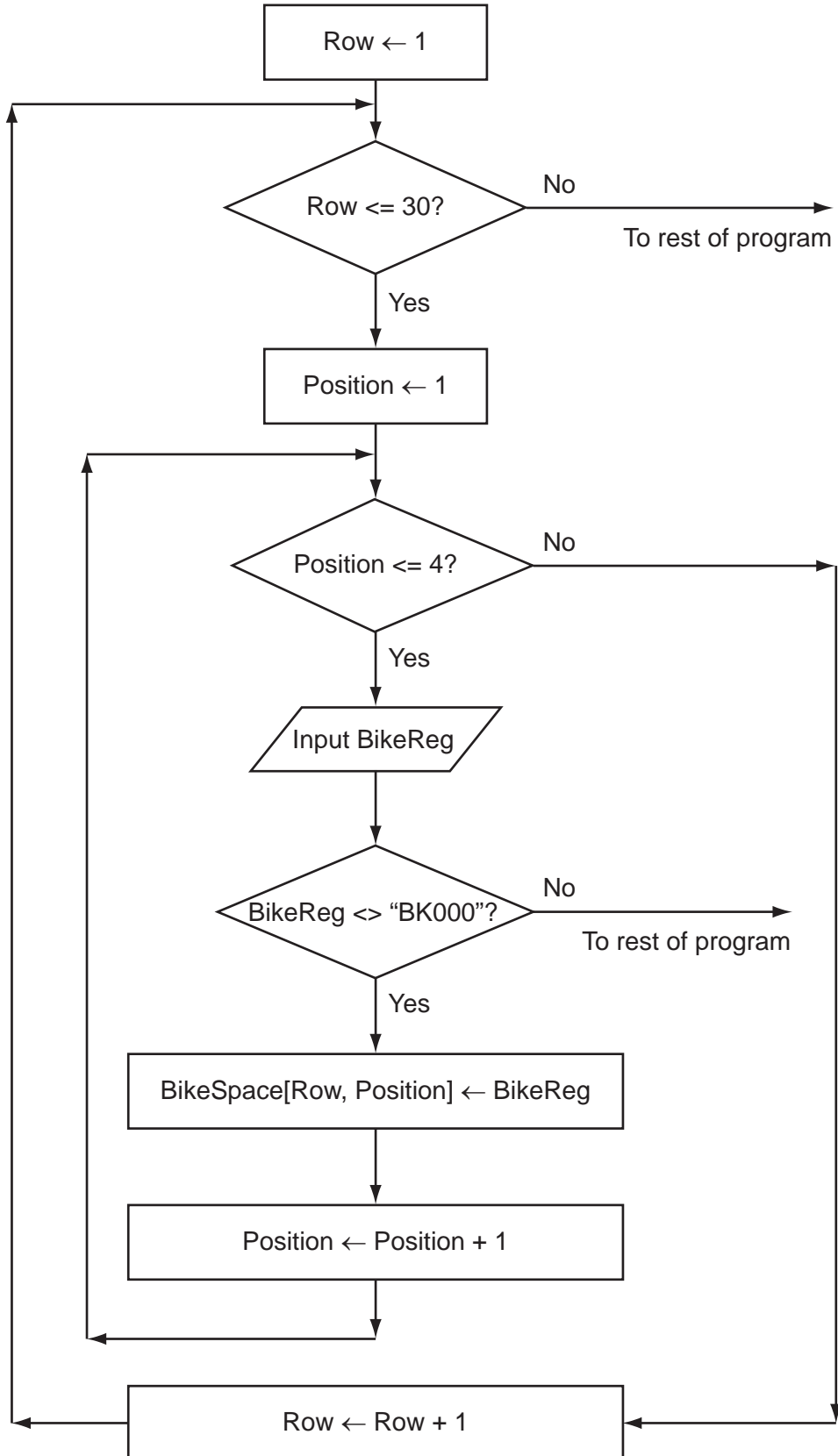
(i) Black box testing

.....
.....
.....
.....
.....
.....
..... [3]

(ii) White box testing

.....
.....
.....
.....
.....
..... [3]

- 2 Super Bikes owns a rectangular parking area with 30 rows; each row has 4 bike spaces. Each bike is always parked in the same space. The array `BikeSpace[30, 4]` stores the bike registrations. Soni uses a flowchart to help him design a module to populate the array with the bike registrations. Input is terminated using the rogue value "BK000".



(a) Complete the trace table for the flowchart with the first five bike registrations. The values to be entered are BK707, BK380, BK162, BK747 and BK913. The row with the headings will also have to be completed.

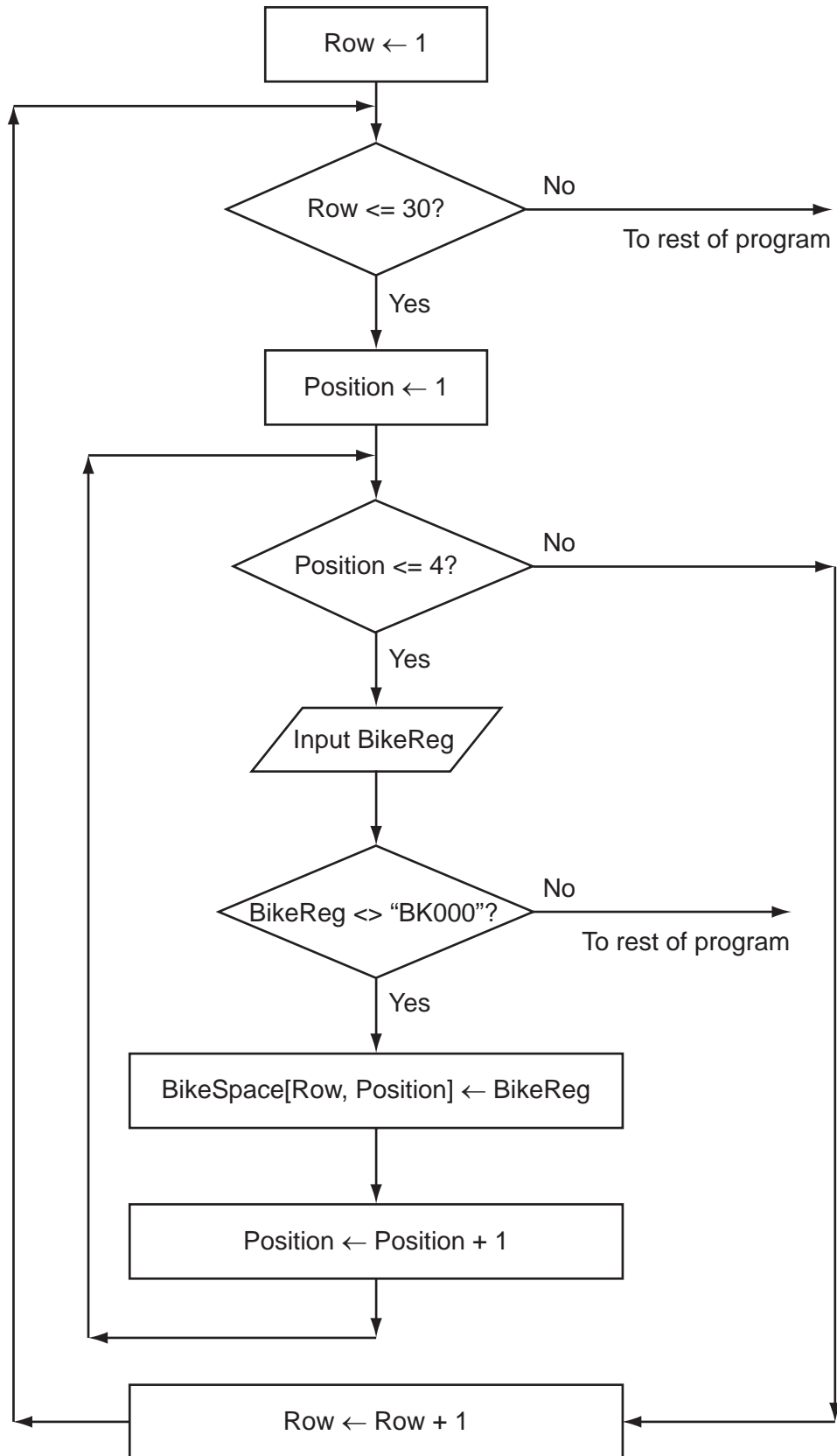
For
Examiner's
Use

Row	Position	Row<=30			BikeSpace				
					[1,1]				
1	1	TRUE			BK707				

[6]

- (b) From the flowchart write the module code, using nested REPEAT...UNTIL loops. Ensure that your code demonstrates good programming practice.

For
Examiner's
Use



Programming language used

Code

.....
.....
.....
.....
.....
.....
.....
.....
.....
.....
.....
.....
.....
.....
.....
.....
..... [7]

*For
Examiner's
Use*

(c) (i) One of the modules uses the expression:

```
Area / (SpaceWidth * SpaceLength - EmptySpaces)
```

State the value of the part of the expression inside the brackets when

```
SpaceWidth ← 7
SpaceLength ← 4
EmptySpaces ← 28
```

..... [1]

(ii) If this expression is used with the above values, there will be an error.

State the name of this type of error.

..... [1]

(iii) Explain how the programmer can stop this type of error occurring during execution.

.....
.....
.....
..... [2]

(d) There are a number of debugging tools associated with high-level languages.

Describe how breakpoints and a variable watch can be used when developing a program.

.....
.....
.....
.....
.....
.....
.....
..... [4]

- 3 Super Bikes will need a printed report that shows all the hires made in a given month, grouped by insurance rating (A, B or C) and the income each hire generated. The report should include the total income figure for each insurance group.

Design the layout of the report.

[7]

- 4 Super Bikes will store the data in files.

(a) One file will store the following data:

- bike registration
- purchase cost of bike
- insurance rating (A, B or C only)
- whether or not service is due

Complete the following table. Use a single value only for Field Size.

Field Name	Data Type	Field Size (in bytes)
BikeReg		
PurchaseCost		
InsuranceRating		
ServiceDue		

[4]

(b) Estimate the size, in kilobytes, of the file if it stores the details of 1000 bikes. Show your working.

.....
.....
.....
.....
.....
.....
.....
.....
..... [4]

(c) (i) Using a high-level programming language, define a bike record with identifier `HireBike` and the fields listed in part (a).

Programming language

Code
.....
.....
.....
.....
.....
.....
.....
..... [5]

For
Examiner's
Use

BLANK PAGE

Permission to reproduce items where third-party owned material protected by copyright is included has been sought and cleared where possible. Every reasonable effort has been made by the publisher (UCLES) to trace copyright holders, but if any items requiring clearance have unwittingly been included, the publisher will be pleased to make amends at the earliest possible opportunity.

University of Cambridge International Examinations is part of the Cambridge Assessment Group. Cambridge Assessment is the brand name of University of Cambridge Local Examinations Syndicate (UCLES), which is itself a department of the University of Cambridge.