



**ADVANCED GCE**

**CLASSICS: CLASSICAL CIVILISATION**

Art and Architecture in the Greek World

**F388**

Candidates answer on the Answer Booklet

**OCR Supplied Materials:**

- 16 page Answer Booklet

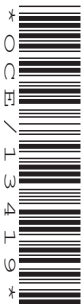
**Other Materials Required:**

None

**Tuesday 25 May 2010**

**Afternoon**

**Duration: 2 hours**



**INSTRUCTIONS TO CANDIDATES**

- Write your name clearly in capital letters, your Centre Number and Candidate Number in the spaces provided on the Answer Booklet.
- Use black ink. Pencil may be used for graphs and diagrams only.
- Read each question carefully and make sure that you know what you have to do before starting your answer.
- Answer **one** question from Section A and **one** question from Section B.
- Do **not** write in the bar codes.

**INFORMATION FOR CANDIDATES**

- The number of marks is given in brackets [ ] at the end of each question or part question.
- In this paper you are encouraged to use diagrams, sketches etc., where appropriate, to illustrate your answers.
- The total number of marks for this paper is **100**.
- This document consists of **8** pages. Any blank pages are indicated.

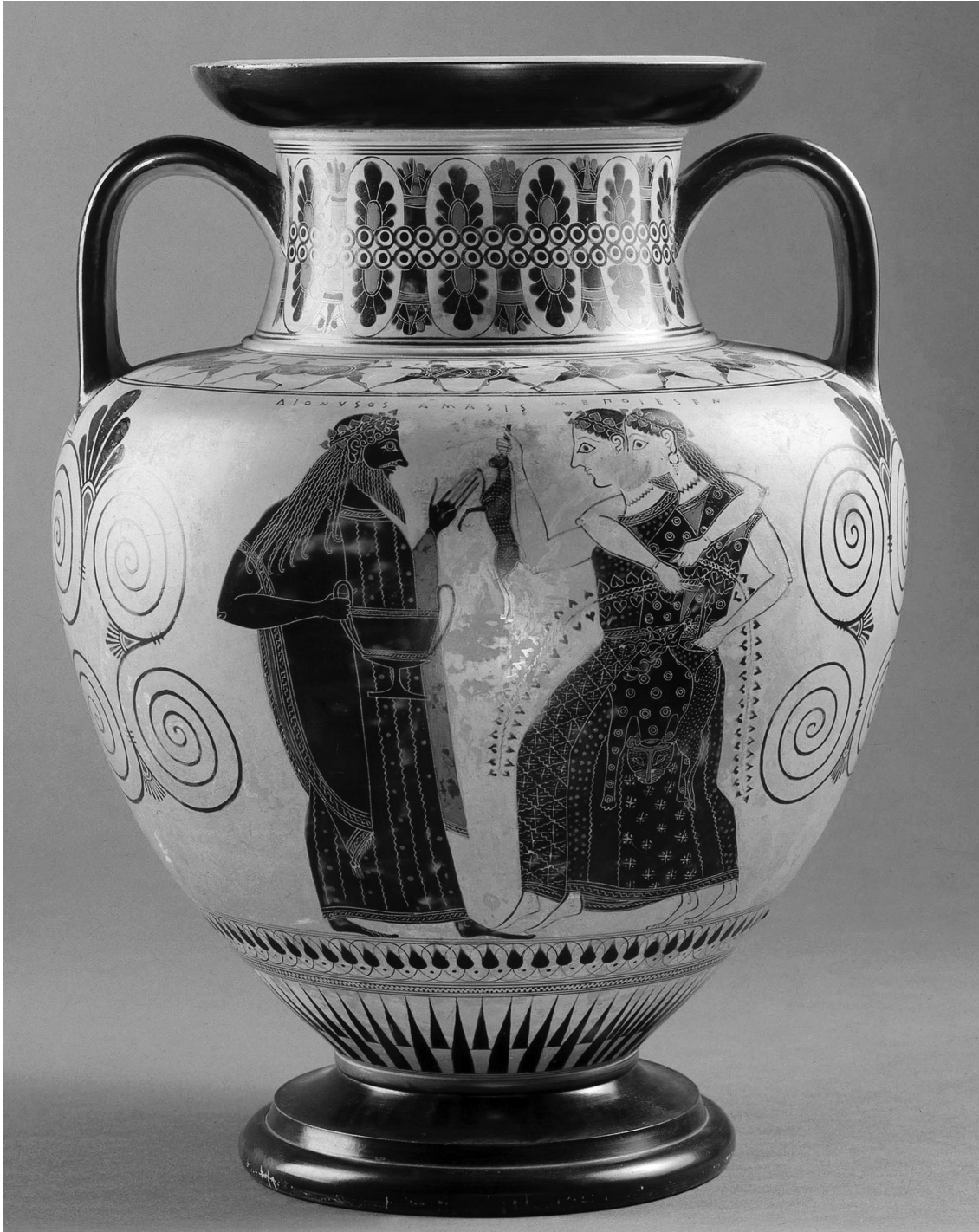
Answer **one** question from Section A and **one** question from Section B.

**Section A: Commentary Questions**

Answer **either** Question 1 **or** Question 2.

**Marks are awarded for the quality of written communication in your answer.**

- 1 Study the illustration and answer the questions.



- (a) 'The painting of the pot is a decorative delight.' To what extent do you agree with this assessment of the Amasis Painter's pot? [25]
- (b) The work of the Amasis Painter has been described as having 'the precision and delicacy of Kleitias but on an enlarged scale'. Do you think that the Amasis Painter's work has more in common with the work of Kleitias or the work of Exekias? [25]

Do **not** answer this question if you have already answered Question 1.

**Marks are awarded for the quality of written communication in your answer.**

2 Study the photograph and answer the questions.



**Temple of Hephaistos, Athenian Agora**

- (a) How typical is the temple of Hephaistos of the architectural order to which it belongs? [25]
- (b) Compare this temple with the temple of Zeus at Olympia and explain which temple you think is the more appropriate for its setting. [25]

**[Section A Total: 50]**

**Section B: Essays**

Answer **one** question.

Start your answer on a new page.

**Marks are awarded for the quality of written communication in your answer.**

- 3** 'Some of the metopes are rather conventional; others are revolutionary.' Do you think this statement is a better description of the metopes of the temple of Zeus at Olympia or the metopes of the Parthenon at Athens? **[50]**
- 4** 'Sculptors of the fourth century produced better and more successful works of art than their predecessors of the fifth century.' How far do you think this is true of the sculpture you have studied? **[50]**

**[Section B Total: 50]**

**BLANK PAGE**



**Copyright Information**

OCR is committed to seeking permission to reproduce all third-party content that it uses in its assessment materials. OCR has attempted to identify and contact all copyright holders whose work is used in this paper. To avoid the issue of disclosure of answer-related information to candidates, all copyright acknowledgements are reproduced in the OCR Copyright Acknowledgements Booklet. This is produced for each series of examinations, is given to all schools that receive assessment material and is freely available to download from our public website ([www.ocr.org.uk](http://www.ocr.org.uk)) after the live examination series.

If OCR has unwittingly failed to correctly acknowledge or clear any third-party content in this assessment material, OCR will be happy to correct its mistake at the earliest possible opportunity.

For queries or further information please contact the Copyright Team, First Floor, 9 Hills Road, Cambridge CB2 1GE.

OCR is part of the Cambridge Assessment Group; Cambridge Assessment is the brand name of University of Cambridge Local Examinations Syndicate (UCLES), which is itself a department of the University of Cambridge.