

Surname	Centre Number	Candidate Number
Other Names		2



GCE AS/A level

1071/01

BIOLOGY/HUMAN BIOLOGY – BY1

A.M. WEDNESDAY, 21 May 2014

1 hour 30 minutes

For Examiner's use only		
Question	Maximum Mark	Mark Awarded
1.	11	
2.	6	
3.	6	
4.	10	
5.	6	
6.	9	
7.	12	
8.	10	
Total	70	

INSTRUCTIONS TO CANDIDATES

Use black ink or black ball-point pen. Do not use pencil or gel pen. Do not use correction fluid.

Write your name, centre number and candidate number in the spaces at the top of this page.

Answer **all** questions.

Write your answers in the spaces provided in this booklet. If you run out of space, use the continuation pages at the back of the booklet, taking care to number the question(s) correctly.

INFORMATION FOR CANDIDATES

The number of marks is given in brackets at the end of each question or part-question.

You are reminded of the necessity for good English and orderly presentation in your answers.

The quality of written communication will affect the awarding of marks.



BLANK PAGE

**PLEASE DO NOT WRITE
ON THIS PAGE**

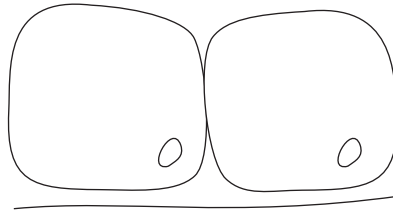


Answer all questions.

1. (a) Samples of epithelial tissue were examined using a light microscope. Drawings of cells from these tissues are shown below. Identify the type of epithelial tissue shown, and suggest from where in the body the samples were taken.

(i)

[2]

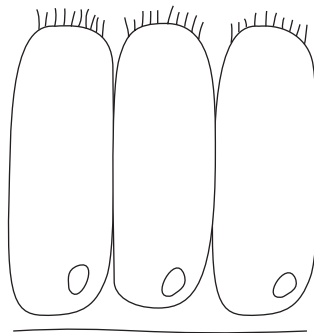


Tissue type

Where found in body

(ii)

[2]

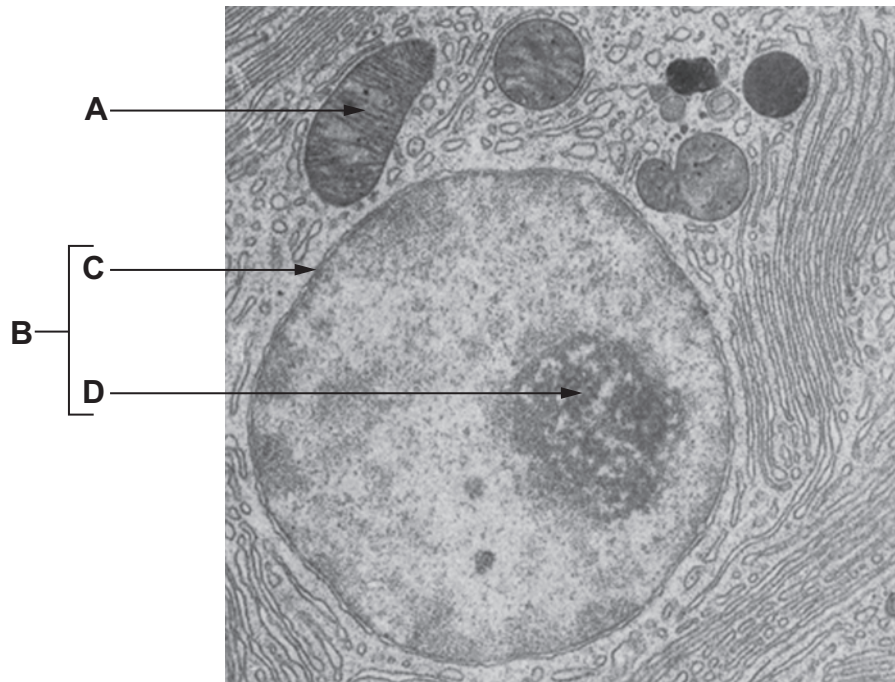


Tissue type

Where found in body



The electron micrograph below shows part of a typical animal cell.



(b) Complete the table below by naming the structures and organelles shown in the electron micrograph above, and describing their functions. [4]

Letter	Organelle / Structure	Function
B	nucleus	
C	nuclear pores	
D		



(c) The nucleus has pores in the envelope that surrounds it, whereas organelle **A** does not. Describe **one other** difference between the membranes that surround organelle **A** and those that surround the nucleus. [1]

.....

.....

.....

(d) Describe **two** differences between the ribosomes found in animal cells and those found in prokaryotic cells. [2]

.....

.....

.....

.....

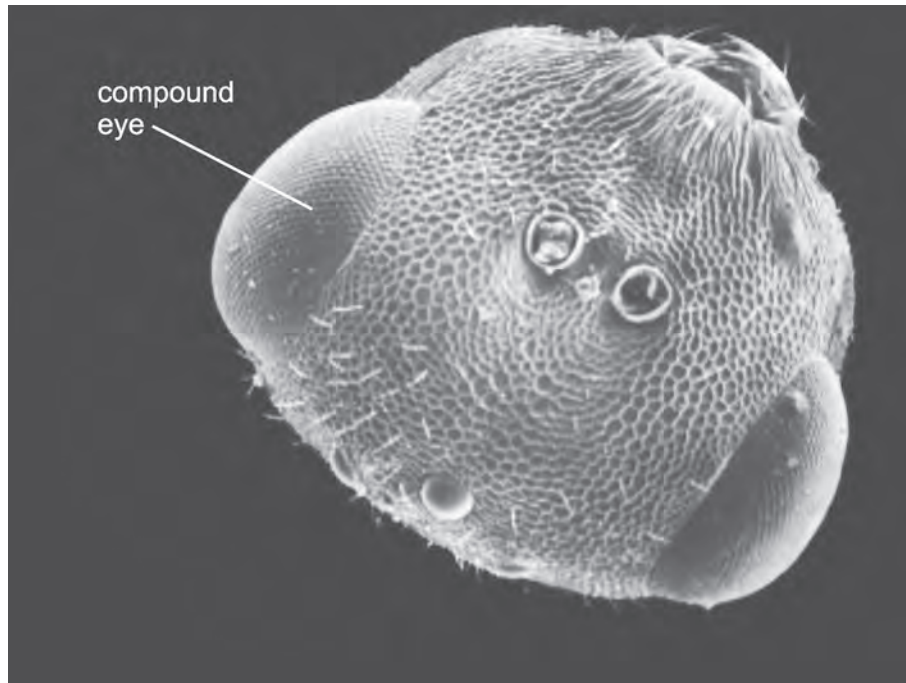
.....

1071
010005

11



2. The photograph below shows the head of a parasitic wasp, *Chlorocytus* species, taken using a scanning electron microscope.



- (a) The photograph shows two compound eyes, which are regarded as organs. State what is meant by the term *organ*.

[2]

.....

.....

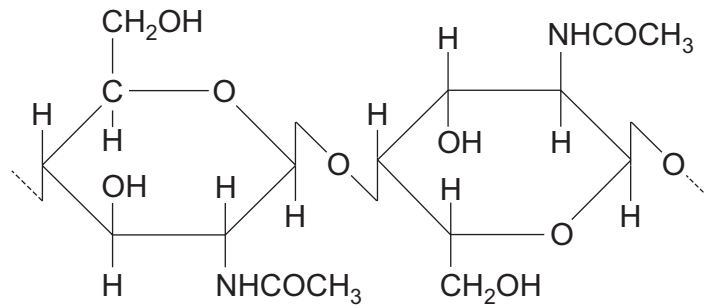
.....

.....

.....



(b) The exoskeleton of insects contains the molecule shown below.



(i) Name the **group** of biological molecules to which the molecule shown above belongs. [1]

.....

(ii) Explain how the molecule shown gives strength to the exoskeleton. [2]

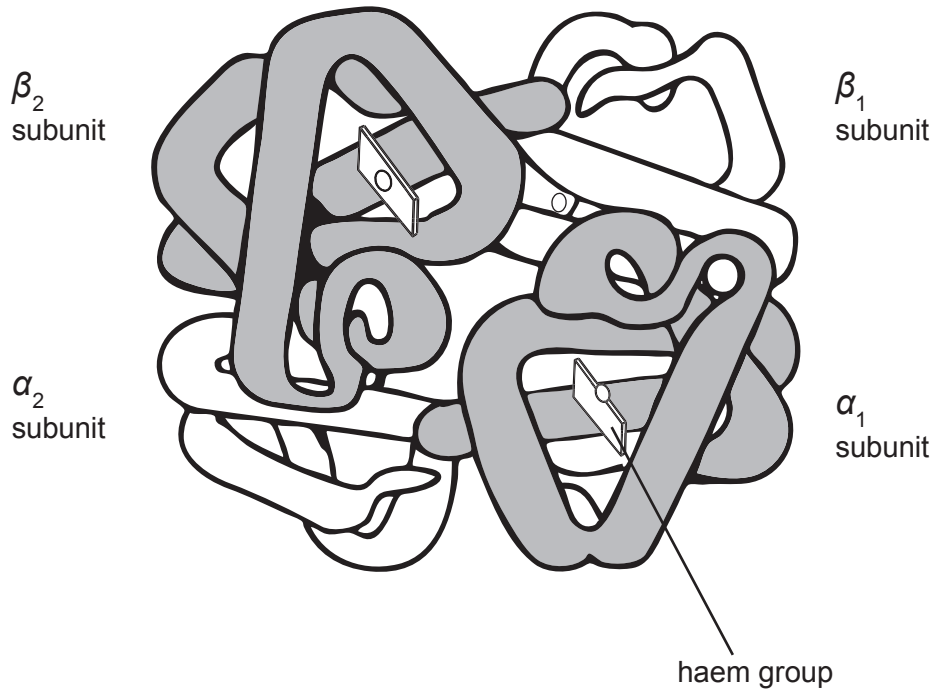
.....

(iii) Some OH groups in the molecule above have been replaced with NHCOCH_3 groups. Name **one other** group of biological molecules that contain nitrogen. [1]

.....



3. The diagram below shows a molecule of haemoglobin.



(a) State the inorganic ion present in the haem group. [1]

.....

(b) Using the diagram above, explain why this molecule is regarded as having a quaternary structure. [2]

.....

.....

.....

.....



(c) Describe the biochemical test that could be performed to test for a protein. [2]

.....

.....

.....

.....

(d) Suggest how the concentration of a specific protein could be measured in a sample of urine. [1]

.....

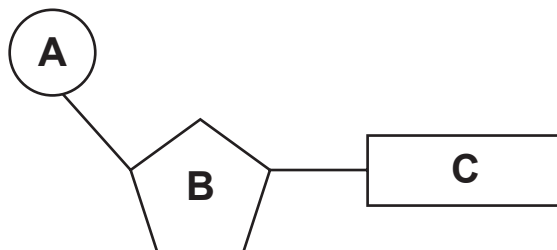
.....

6

1071
010009



4. The diagram below shows a component of **DNA**.



(a) Name the parts **A**, **B** and **C**.

[3]

A

B

C

(b) Describe how a polymer of DNA would be different from a polymer of RNA.

[2]

.....

.....

.....

.....

.....



(c) (i) Name the stage in the cell cycle where DNA replication occurs. [1]

.....

(ii) Vincristine is a drug which prevents the spindle fibres from shortening. Name the stage in the cell cycle which would be affected. [1]

.....

(iii) State **three** differences between daughter cells produced by the process of mitosis and those produced by meiosis. [3]

.....

.....

.....

.....

.....

.....

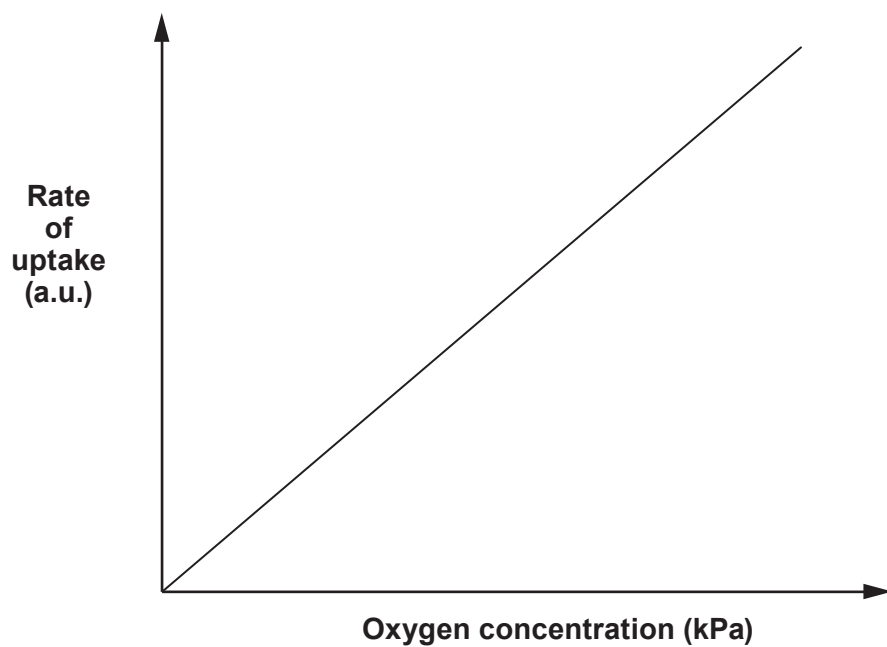
10

1071
010011

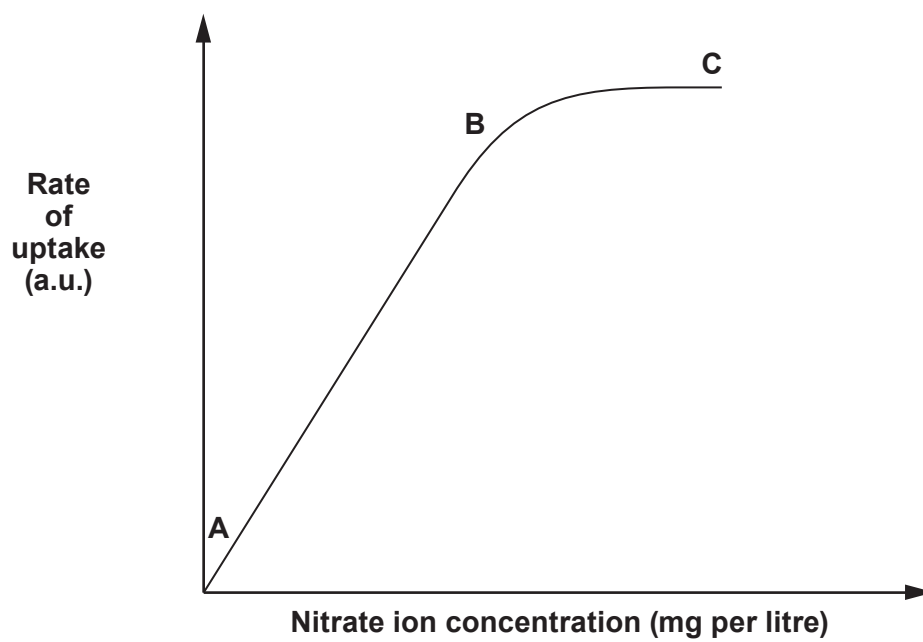


5. The graphs below show the uptake of different molecules into the roots of plants.

I. Oxygen



II. Nitrate ions



(a) Using graph I, name the process by which oxygen is absorbed by the roots, giving a reason for your answer. [2]

.....
.....
.....

(b) Explain why the rate of uptake of nitrate ions increases between points A and B shown on graph II. [1]

.....
.....
.....

(c) In the presence of a respiratory inhibitor such as cyanide, the rate of nitrate uptake falls to zero. Name the process by which nitrate ions are taken up. [1]

.....

(d) Water enters root hair cells by osmosis. Calculate the solute potential (Ψ_s) of the root hair cell, when there is no net movement of water, the water potential of the soil water is -100 kPa and the pressure potential (Ψ_p) inside the root hair cell is $+200\text{ kPa}$. Use the formula $\Psi = \Psi_s + \Psi_p$.

Show your working and units. [2]

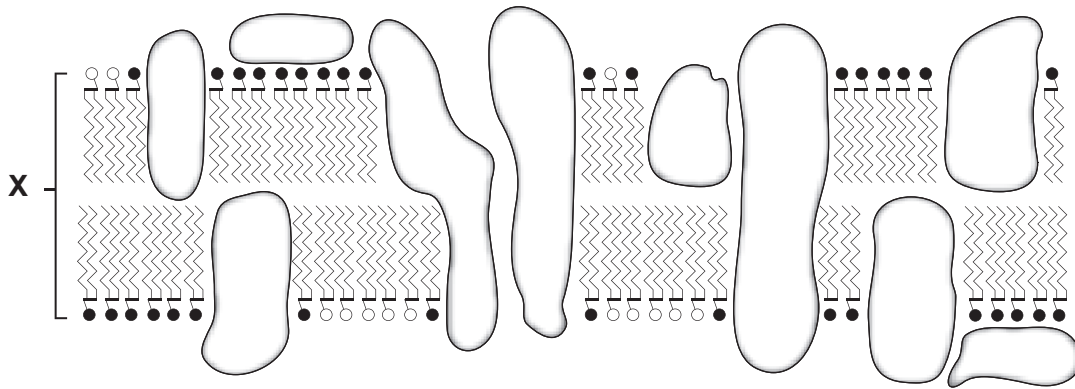
Answer

6

1071
010013



6. The diagram below shows the fluid mosaic model proposed by Singer and Nicolson in 1972.



(a) The width of the membrane as shown by X has been measured using transmission electron microscopes. Membrane width does not vary greatly between different organisms. State a value for this width. [1]

Membrane width =

(b) Glucose is water soluble. Vitamin A is lipid soluble. Describe and explain how each molecule crosses the membrane shown above. [4]

Vitamin A

.....
.....
.....
.....
.....
.....

Glucose

.....
.....
.....
.....
.....
.....



(c) Beetroot vacuoles contain a red pigment called *betacyanin*. When beetroot discs are cut with a borer and immersed in a solution of 70% ethanol (an organic solvent) at 15°C, the red pigment begins to leak out of the cells into the ethanol turning it red.

(i) Using your knowledge of the structure of cell membranes, explain why this leakage of pigment occurs. [2]

.....

.....

.....

.....

.....

(ii) When the experiment was repeated at 30°C, the time taken for the ethanol to turn red decreased. Explain why. [2]

.....

.....

.....

.....

9

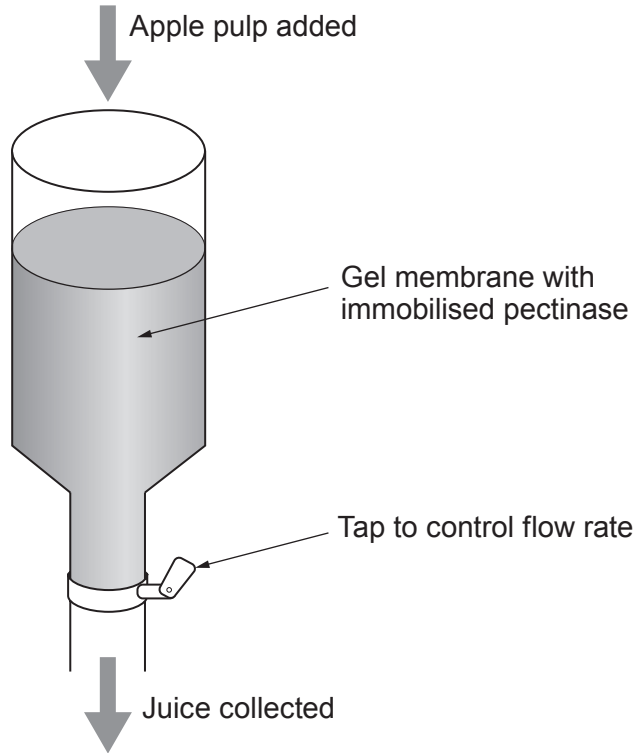


BLANK PAGE

**PLEASE DO NOT WRITE
ON THIS PAGE**



7. Pectin is a structural polysaccharide found in the cell walls of plant cells and in the middle lamella between cells, where it helps to bind cells together. Pectinases are enzymes that are routinely used in industry to increase the volume and clarity of fruit juice extracted from apples. The enzyme is immobilised onto the surface of a gel membrane which is then placed inside a column. Apple pulp is added at the top, and juice is collected at the bottom. The process is shown in the diagram below.



- (a) Immobilising enzymes can increase the temperature range over which they can be used. Describe **two other** advantages of immobilising pectinases. [2]

.....

.....

.....

.....

- (b) Suggest why reducing the flow rate of material through the column would result in an increased volume of juice being collected. [2]

.....

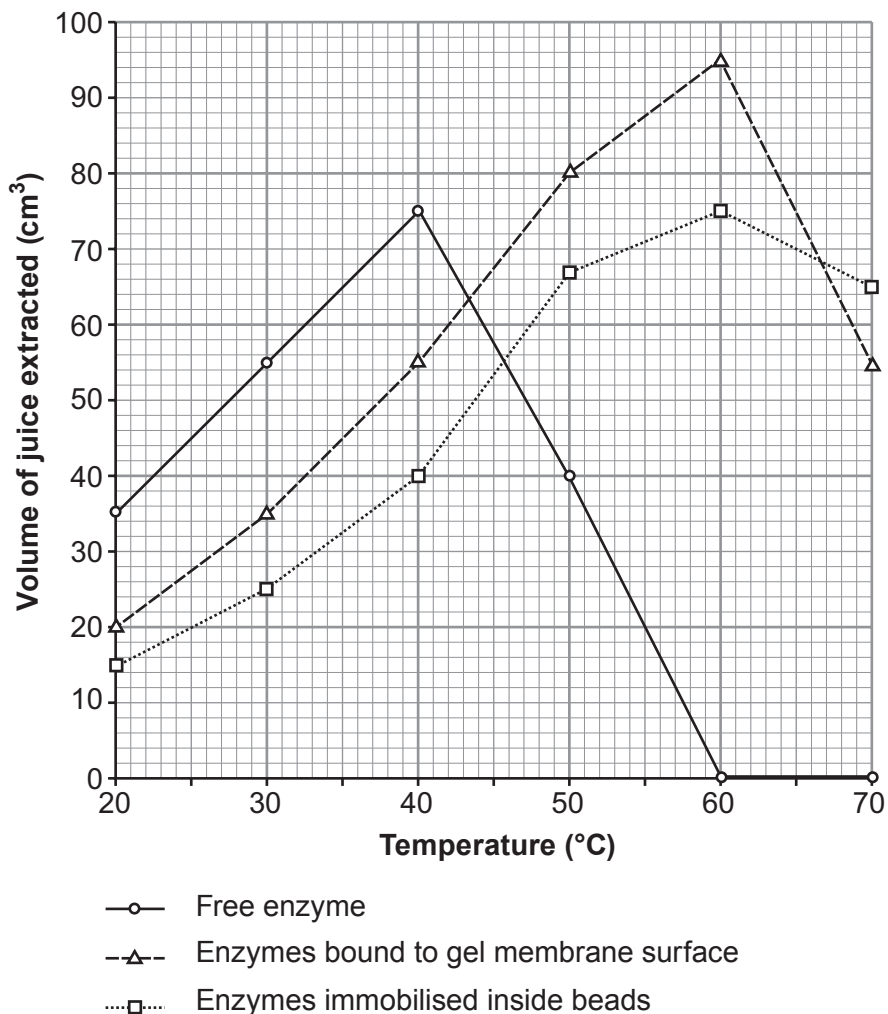
.....

.....

.....



- (c) The extraction of juice using pectinase was compared using equal volumes and concentrations of free enzyme, enzymes bound to the surface of a gel membrane and enzymes immobilised inside alginate beads. The results are shown in the graph below.



Using the graph and your own knowledge of enzymes, answer the following questions.

- (i) Describe and explain the results for the free enzyme at temperatures above 40°C. [4]

.....

.....

.....

.....

.....

.....



(ii) Explain why a higher yield of juice was obtained when using free enzyme between temperatures of 20°C and 40°C than when using immobilised enzyme. [2]

.....

.....

.....

.....

(iii) Suggest a reason for the differences seen in the results for the enzymes bound to the gel membrane surface with those immobilised inside the beads, between temperatures of 20°C and 60°C. [2]

.....

.....

.....

.....

12



Examiner
only

A large rectangular area with a solid top and bottom border and a dotted line for a left margin, providing space for writing.



Examiner
only

Area with horizontal dotted lines for writing.

END OF PAPER

10



