

Please check the examination details below before entering your candidate information

Candidate surname

Other names

Centre Number

Candidate Number

--	--	--	--	--

--	--	--	--

Pearson Edexcel Level 3 GCE

Time 1 hour 30 minutes

Paper
reference

8CH0/01

Chemistry

Advanced Subsidiary

PAPER 1: Core Inorganic and Physical Chemistry

You must have:

Scientific calculator, Data Booklet

Total Marks

Instructions

- Use **black** ink or ball-point pen.
- **Fill in the boxes** at the top of this page with your name, centre number and candidate number.
- Answer **all** questions.
- Answer the questions in the spaces provided
– *there may be more space than you need.*

Information

- The total mark for this paper is 80.
- The marks for **each** question are shown in brackets
– *use this as a guide as to how much time to spend on each question.*
- For the question marked with an **asterisk** (*), marks will be awarded for your ability to structure your answer logically, showing the points that you make are related or follow on from each other where appropriate.
- A Periodic Table is printed on the back cover of this paper.

Advice

- Read each question carefully before you start to answer it.
- Show all your working in calculations and include units where appropriate.
- Check your answers if you have time at the end.

Turn over ►

P70801A

©2022 Pearson Education Ltd.

Q:1/1/1/




Pearson

DO NOT WRITE IN THIS AREA

DO NOT WRITE IN THIS AREA

DO NOT WRITE IN THIS AREA

BLANK PAGE



Answer ALL questions.

Some questions must be answered with a cross . If you change your mind about an answer, put a line through the box and then mark your new answer with a cross .

1 Which is the electronic configuration for the S^{2-} ion?

- A $1s^2 2s^2 2p^6 3s^2 3p^2$
- B $1s^2 2s^2 2p^6 3s^2 3p^4$
- C $1s^2 2s^2 2p^6 3p^6$
- D $1s^2 2s^2 2p^6 3s^2 3p^6$

(Total for Question 1 = 1 mark)

2 Which is the most likely sequence of values, in kJ mol^{-1} , for the first four ionisation energies of barium?

- A 1000 2251 3361 4564
- B 496 4563 6913 9544
- C 503 965 3458 4530
- D 578 1817 2745 11578

(Total for Question 2 = 1 mark)

DO NOT WRITE IN THIS AREA

DO NOT WRITE IN THIS AREA

DO NOT WRITE IN THIS AREA



3 This question is about tests for ions.

- (a) A student wrote the following answer to a question about the processes that can give rise to a flame colour during a flame test of an inorganic compound.

"When an inorganic compound is heated, energy is emitted as ions move up energy levels. Electrons return to lower energy levels and release energy as light which is always in the visible region of the electromagnetic spectrum."

Identify **three** errors in this account. Include in your answers a correct word or phrase that should be used instead.

(3)

First error

Correct word or phrase

Second error

Correct word or phrase

Third error

Correct word or phrase



(b) Which compound does **not** give a red colour in a flame test?

(1)

- A** calcium chloride
- B** lithium carbonate
- C** sodium iodide
- D** strontium bromide

(c) A wire is used for a flame test.

Which material would be most suitable for a flame test wire?

(1)

- A** copper
- B** iron
- C** magnesium
- D** platinum

(d) An aqueous solution is suspected to be potassium bromide and is tested for the presence of the anion.

(i) Write the **name** of the reagent used to test for the anion.

(1)

(ii) State the expected result of this test and the **formula** of the product.

(2)

Result of test

Formula of the product

(Total for Question 3 = 8 marks)



4 This question is about isotopes, mass spectra and hydrocarbons.

(a) Hydrogen has three isotopes, ^1H , ^2H and ^3H .

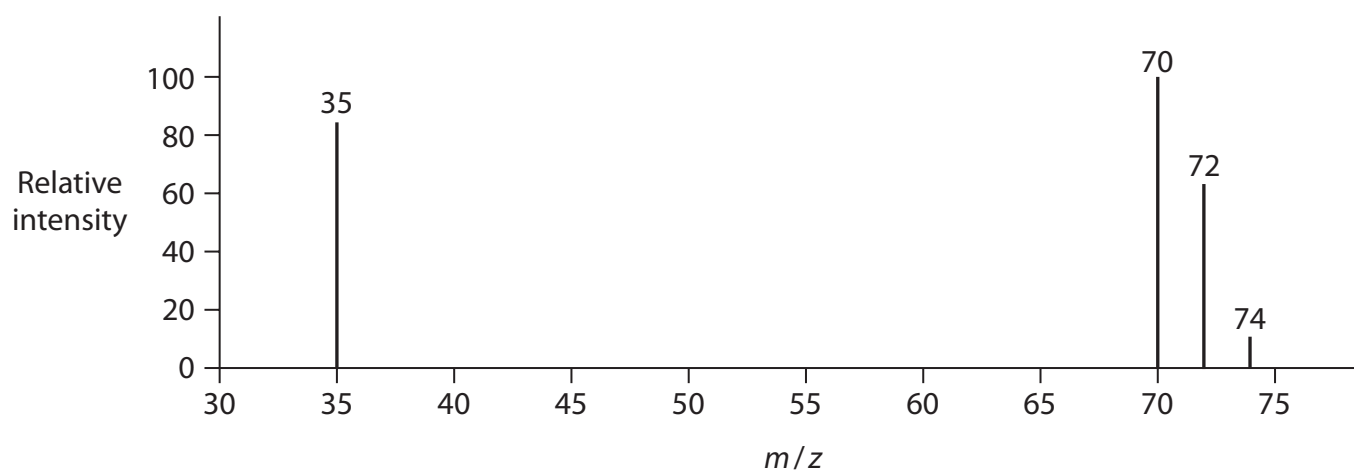
Which is the correct number of subatomic particles in ^3H ?

(1)

Number of subatomic particles			
	Protons	Neutrons	Electrons
<input type="checkbox"/> A	2	1	2
<input type="checkbox"/> B	1	2	0
<input type="checkbox"/> C	1	2	1
<input type="checkbox"/> D	2	1	3

(b) The diagram shows the mass spectrum of a sample of chlorine with one peak missing.

Chlorine has two isotopes, ^{35}Cl and ^{37}Cl , and a relative atomic mass of 35.5



- (i) The relative abundance of the isotope ^{35}Cl is 75.5%.
The relative peak height of this isotope is 82.5 in the mass spectrum.

Calculate the relative peak height of the missing peak caused by the isotope ^{37}Cl .

(2)

- (ii) Give a reason for the presence of the three peaks at 70, 72 and 74.

(1)

- (iii) Explain, using calculations, why there is an approximate ratio of 9:6:1 for the peak heights corresponding to the m/z values of 70, 72 and 74.

(3)

DO NOT WRITE IN THIS AREA

DO NOT WRITE IN THIS AREA

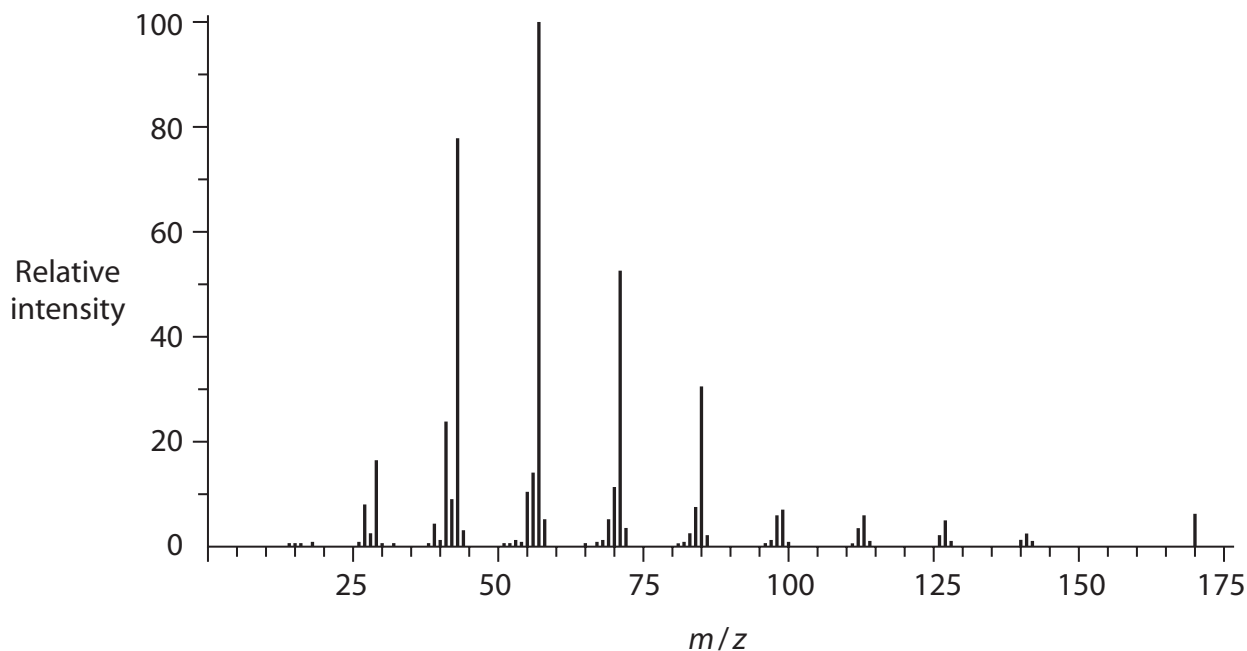
DO NOT WRITE IN THIS AREA



(c) The mass spectrum of a hydrocarbon, **B**, which has a molecular formula C_xH_y , is shown.

(i) Determine the relative molecular mass of compound **B**.

(1)



Relative molecular mass of compound **B** is

(ii) Deduce the molecular formula of hydrocarbon **B**.

(1)



DO NOT WRITE IN THIS AREA

DO NOT WRITE IN THIS AREA

DO NOT WRITE IN THIS AREA

(d) 1.00 g of a **different** hydrocarbon, **W**, was burnt in oxygen.
Analysis of the combustion products showed that complete combustion produced 3.14 g of carbon dioxide and 1.29 g of water.

Water and carbon dioxide were the only products of combustion.

Calculate the **empirical** formula of hydrocarbon **W**.
You **must** show your working.

(4)

(Total for Question 4 = 13 marks)



DO NOT WRITE IN THIS AREA

DO NOT WRITE IN THIS AREA

DO NOT WRITE IN THIS AREA

BLANK PAGE



5 Intermolecular forces affect melting temperatures, boiling temperatures and solubility.

(a) The table gives the melting temperatures of some Group 7 hydrogen halides.

Compound	Melting temperature / K
HF	190
HCl	158
HBr	185

Predict the melting temperature, in K, of hydrogen iodide, HI, using the information in the table.

(1)

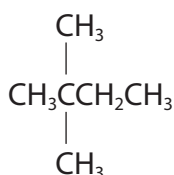
Melting temperature of HI K

(b) The compounds in the table are isomers.

Compound	Structural formula	Boiling temperature / °C
hexane	$\text{CH}_3\text{CH}_2\text{CH}_2\text{CH}_2\text{CH}_2\text{CH}_3$	69
2-methylpentane	$\begin{array}{c} \text{CH}_3\text{CH}_2\text{CH}_2\text{CHCH}_3 \\ \\ \text{CH}_3 \end{array}$	61
3-methylpentane	$\begin{array}{c} \text{CH}_3\text{CH}_2\text{CHCH}_2\text{CH}_3 \\ \\ \text{CH}_3 \end{array}$	63

Which is most likely to be the boiling temperature of another isomer, 2,2-dimethylbutane?

The structure of 2,2-dimethylbutane is



(1)

- A 40°C
- B 50°C
- C 60°C
- D 70°C



*(c) Methanol, CH_3OH , is miscible with water in all proportions.
Sodium chloride is much less soluble in methanol than in water.

Explain these statements using your knowledge of the interactions between solutes and solvents.

You **must** use diagrams to illustrate your answers.

(6)

Area with horizontal dotted lines for writing the answer.



DO NOT WRITE IN THIS AREA

DO NOT WRITE IN THIS AREA

DO NOT WRITE IN THIS AREA

Area with horizontal dotted lines for writing.

(Total for Question 5 = 8 marks)



P 7 0 8 0 1 A 0 1 3 2 8

6 The table shows some information about the structure and bonding in four substances.

(a) Complete the table.

(2)

Substance	Structure	Bonding	Melting temperature / K
silicon(IV) oxide	giant	covalent	1883
potassium chloride			1043
iron		metallic	1808
iodine		covalent	387

(b) Explain why the melting temperature of silicon(IV) oxide is much higher than that of iodine, even though the bonding in both is covalent.

(3)

.....

.....

.....

.....

.....

.....

.....

.....

.....

.....



7 This question is about s-block elements and some of their compounds.

(a) Which list contains only s-block elements?

(1)

- A Li, Na, Mg and Cl
- B K, Ca, Co and Rb
- C Mg, Al, Sr and Ba
- D Be, Rb, Ba and Ra

(b) Which pair of statements describes the trends **down** Group 2?

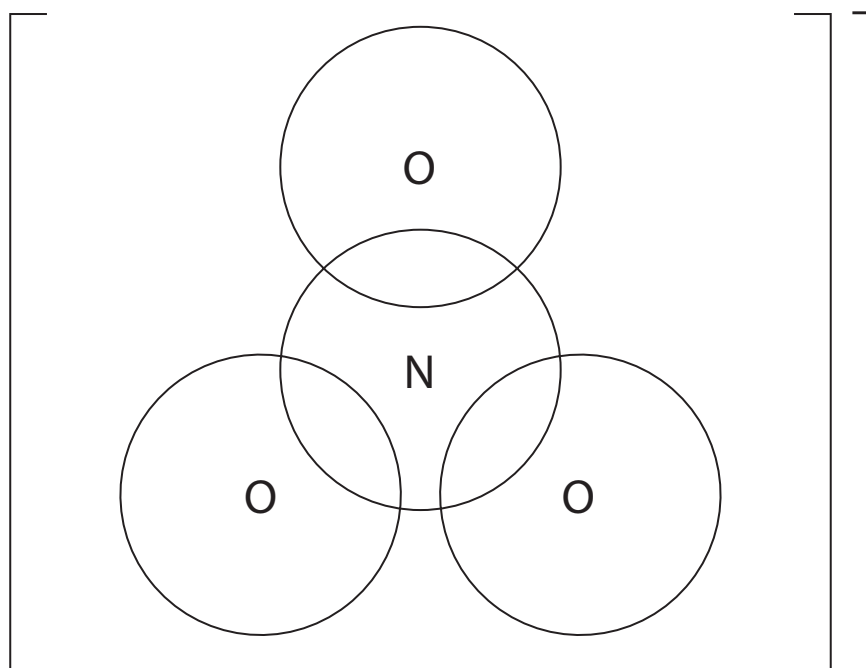
(1)

	Solubility of sulfates	Solubility of hydroxides
<input type="checkbox"/> A	increases	increases
<input type="checkbox"/> B	decreases	increases
<input type="checkbox"/> C	decreases	decreases
<input type="checkbox"/> D	increases	decreases

(c) The s-block nitrates undergo thermal decomposition.

(i) Draw a dot-and-cross diagram for the nitrate(V) ion, NO_3^- , showing outer electrons only.

(1)



(ii) Write an equation for the thermal decomposition of lithium nitrate.

State symbols are **not** required.

(1)

(iii) The equation for the thermal decomposition of sodium nitrate is different from that for lithium nitrate.



The gas produced is collected in a gas syringe.

Calculate the theoretical volume of gas, in **cm³**, that could be collected at 298 K and 101 kPa by the decomposition of 0.500 g of pure sodium nitrate. Give your answer to 2 significant figures.

[$pV = nRT$, $R = 8.31 \text{ J mol}^{-1} \text{ K}^{-1}$]

(4)

DO NOT WRITE IN THIS AREA

DO NOT WRITE IN THIS AREA

DO NOT WRITE IN THIS AREA



(iv) State one reason why the experimental gas volume may differ from the calculated theoretical volume.
Assume that no gas escapes and measurements have been made accurately. (1)

.....

.....

(d) A textbook states, 'The thermal stability of Group 1 carbonates is generally higher than the thermal stability of Group 2 carbonates in the same period'.
Explain why Group 1 carbonates are more thermally stable than Group 2 carbonates. (3)

.....

.....

.....

.....

.....

.....

.....

.....

.....

.....

.....

(Total for Question 7 = 12 marks)

DO NOT WRITE IN THIS AREA

DO NOT WRITE IN THIS AREA

DO NOT WRITE IN THIS AREA



DO NOT WRITE IN THIS AREA

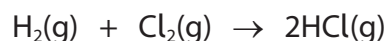
DO NOT WRITE IN THIS AREA

DO NOT WRITE IN THIS AREA

8 This question is about some reactions of chlorine and hydrogen chloride.

- (a) When hydrogen gas and chlorine gas are mixed and passed over a hot platinum catalyst, hydrogen chloride gas is formed.

The equation for this reaction is



In an experiment, 20 cm^3 of dry hydrogen gas was reacted with 20 cm^3 of dry chlorine gas.

All gas volumes were measured at room temperature and pressure (r.t.p.).

Calculate the number of gas molecules in the product at r.t.p.

[Molar volume of a gas at r.t.p. = $24\,000 \text{ cm}^3 \text{ mol}^{-1}$

Avogadro constant (L) = $6.02 \times 10^{23} \text{ mol}^{-1}$]

(2)



(b) Hydrogen chloride gas dissolves in water to form hydrochloric acid.

- (i) Hydrogen chloride gas does not conduct electricity.
Hydrochloric acid is a good conductor of electricity.

Give a reason for this change in conductivity.

(1)

- (ii) When concentrated hydrochloric acid on a glass rod is held above a concentrated ammonia solution, a white smoke is observed.

Write an equation, including state symbols, for the reaction that produces the white smoke.

(2)

- (iii) Hydrochloric acid is added to a test tube containing a sample of solid sodium carbonate.

Give **two** observations.

(2)



(iv) Describe an experiment to enable you to accurately determine the concentration of an approximately 1 mol dm^{-3} solution of hydrochloric acid, using a solution of sodium hydroxide of concentration 1.00 mol dm^{-3} .
Details of the calculation are not required.

(5)

DO NOT WRITE IN THIS AREA

DO NOT WRITE IN THIS AREA

DO NOT WRITE IN THIS AREA

Area with horizontal dotted lines for writing the answer.



- (c) Chlorine can be produced by reacting concentrated hydrochloric acid with manganese(IV) oxide.

The equation for this reaction is



- (i) Deduce the half-equation for the formation of chlorine.

(1)

- (ii) A student reacted 5.0 cm^3 of 5.0 mol dm^{-3} hydrochloric acid with an excess of manganese(IV) oxide. 70 cm^3 of chlorine gas was produced.

The teacher said the expected percentage yield of the experiment is 75%.

Determine whether the student achieved the expected percentage yield.

[Molar volume of a gas at r.t.p. = $24\,000 \text{ cm}^3 \text{ mol}^{-1}$]

(4)



- (d) Chlorine reacts with hot concentrated aqueous sodium hydroxide to produce sodium chlorate(V) as one of the products.

The equation for this reaction is



- (i) Explain, using oxidation numbers, why this is a disproportionation reaction. (2)

.....

.....

.....

.....

.....

.....

- (ii) Calculate the atom economy, by mass, of sodium chlorate(V) in this reaction. (3)

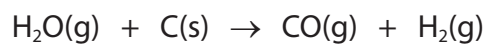
(Total for Question 8 = 22 marks)



9 Water gas is a fuel gas consisting of a mixture of carbon monoxide and hydrogen.

(a) Water gas is produced by passing steam over white hot coke.

The equation for the reaction is shown.



Calculate the total mass of products when 1000 **kg** of steam reacts completely.

(2)

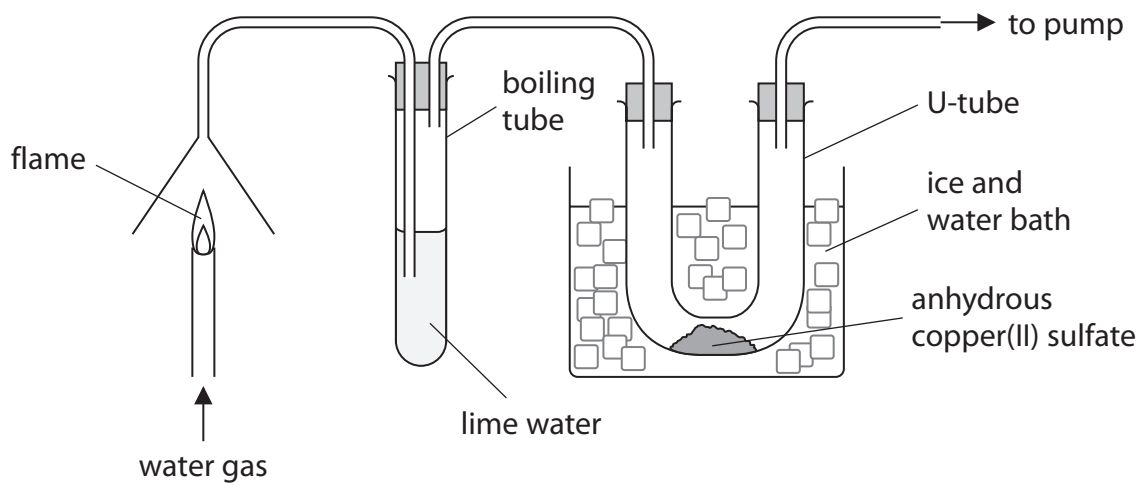
DO NOT WRITE IN THIS AREA

DO NOT WRITE IN THIS AREA

DO NOT WRITE IN THIS AREA



- (b) The complete combustion of water gas produces carbon dioxide and water. A student drew a diagram of the apparatus to attempt to identify the combustion products.



Evaluate whether the student's apparatus is suitable for identifying both of the combustion products. Include any improvements needed.

(5)

(Total for Question 9 = 7 marks)

TOTAL FOR PAPER = 80 MARKS



DO NOT WRITE IN THIS AREA

DO NOT WRITE IN THIS AREA

DO NOT WRITE IN THIS AREA

BLANK PAGE



DO NOT WRITE IN THIS AREA

DO NOT WRITE IN THIS AREA

DO NOT WRITE IN THIS AREA

BLANK PAGE



P 7 0 8 0 1 A 0 2 7 2 8

The Periodic Table of Elements

1 2 3 4 5 6 7 0 (8) (18)

1.0
H
hydrogen
1

Key

relative atomic mass
atomic symbol
name
atomic (proton) number

(1) (2)

6.9 **Li**
lithium
3
9.0 **Be**
beryllium
4
24.3 **Mg**
magnesium
12

(13)

10.8 **B**
boron
5
12.0 **C**
carbon
6
28.1 **Al**
aluminium
13

(14)

14.0 **N**
nitrogen
7
16.0 **O**
oxygen
8
31.0 **P**
phosphorus
15

(15)

32.1 **S**
sulfur
16
35.5 **Cl**
chlorine
17
79.0 **Br**
bromine
35
127.6 **Te**
tellurium
52

(16)

126.9 **I**
iodine
53
209.0 **Po**
polonium
84

(17)

19.0 **F**
fluorine
9
35.5 **Cl**
chlorine
17
79.9 **Br**
bromine
35
126.9 **I**
iodine
53
210.0 **At**
astatine
85

(18)

4.0 **He**
helium
2
20.2 **Ne**
neon
10
39.9 **Ar**
argon
18
83.8 **Kr**
krypton
36
131.3 **Xe**
xenon
54
[222] **Rn**
radon
86

(12)

65.4 **Zn**
zinc
30
112.4 **Cd**
cadmium
48
200.6 **Hg**
mercury
80

(11)

63.5 **Cu**
copper
29
107.9 **Ag**
silver
47
197.0 **Au**
gold
79

(10)

58.7 **Ni**
nickel
28
106.4 **Pd**
palladium
46
195.1 **Pt**
platinum
78

(9)

58.9 **Co**
cobalt
27
102.9 **Rh**
rhodium
45
192.2 **Ir**
iridium
77

(8)

55.8 **Fe**
iron
26
101.1 **Ru**
ruthenium
44
190.2 **Os**
osmium
76

(7)

54.9 **Mn**
manganese
25
[98] **Tc**
technetium
43
186.2 **Re**
rhenium
75

(6)

52.0 **Cr**
chromium
24
95.9 **Mo**
molybdenum
42
183.8 **W**
tungsten
74

(5)

50.9 **V**
vanadium
23
92.9 **Nb**
niobium
41
180.9 **Ta**
tantalum
73

(4)

47.9 **Ti**
titanium
22
91.2 **Zr**
zirconium
40
178.5 **Hf**
hafnium
72

(3)

45.0 **Sc**
scandium
21
88.9 **Y**
yttrium
39
138.9 **La***
lanthanum
57

40.1 **Ca**
calcium
20
87.6 **Sr**
strontium
38
137.3 **Ba**
barium
56

[223] **Fr**
francium
87
[226] **Ra**
radium
88
[227] **Ac***
actinium
89

150 **Ce**
cerium
58
141 **Pr**
praseodymium
59
144 **Nd**
neodymium
60
150 **Sm**
samarium
62
152 **Eu**
europium
63
157 **Gd**
gadolinium
64
163 **Dy**
dysprosium
66
165 **Ho**
holmium
67
167 **Er**
erbium
68
169 **Tm**
thulium
69
173 **Yb**
ytterbium
70
175 **Lu**
lutetium
71

232 **Th**
thorium
90
[231] **Pa**
protactinium
91
[237] **Np**
neptunium
93
[242] **Pu**
plutonium
94
[243] **Am**
americium
95
[247] **Cm**
curium
96
[251] **Cf**
californium
98
[254] **Es**
einsteinium
99
[255] **Bk**
berkelium
97
[256] **Md**
mendelevium
101
[257] **Lr**
lawrencium
103

Elements with atomic numbers 112-116 have been reported but not fully authenticated

* Lanthanide series

* Actinide series

