

UNIVERSITY OF CAMBRIDGE INTERNATIONAL EXAMINATIONS

GCE Advanced Subsidiary Level and GCE Advanced Level

**MARK SCHEME for the May/June 2012 question paper
for the guidance of teachers**

9701 CHEMISTRY

9701/41

Paper 4 (A2 Structured Questions), maximum raw mark 100

This mark scheme is published as an aid to teachers and candidates, to indicate the requirements of the examination. It shows the basis on which Examiners were instructed to award marks. It does not indicate the details of the discussions that took place at an Examiners' meeting before marking began, which would have considered the acceptability of alternative answers.

Mark schemes must be read in conjunction with the question papers and the report on the examination.

- Cambridge will not enter into discussions or correspondence in connection with these mark schemes.

Cambridge is publishing the mark schemes for the May/June 2012 question papers for most IGCSE, GCE Advanced Level and Advanced Subsidiary Level syllabuses and some Ordinary Level syllabuses.

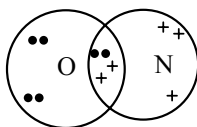


Page 2	Mark Scheme: Teachers' version	Syllabus	Paper
	GCE AS/A LEVEL – May/June 2012	9701	41

- 1 (a) (i) the enthalpy change/released when **1 mole is formed** [1]
of ionic lattice **from the gas phase ions** [1]
(ii) $\text{Mg}^{2+} + \text{O}^{2-} \longrightarrow \text{MgO}$ [1]
[3]
- (b) measurements needed:
volume/mass/weight of water (in calorimeter) [1]
initial + final temperature/temperature change/temperature rise (of the water) [1]
mass of Mg (used)/mass MgO [1]
Not volume/moles/mass of oxygen used [3]
- (c) $\Delta H = 148 + 736 + 1450 + 496/2 - 141 + 798 - 3791$
= **-552 kJ mol⁻¹** [3]
[3]
- (d) $\text{Na}_2\text{O}(\text{s}) + \text{H}_2\text{O}(\text{aq/l}) \longrightarrow 2\text{NaOH}(\text{aq})$ [1]
 $\text{MgO}(\text{s}) + \text{H}_2\text{O}(\text{aq/l}) \longrightarrow \text{Mg}(\text{OH})_2(\text{s})$ or $\text{Mg}(\text{OH})_2(\text{aq})$ [1]
pH 12.5-14 [NaOH] **AND** 8-10.5 [Mg(OH)₂] respectively [1]
[3]

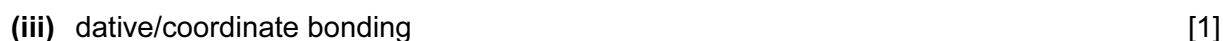
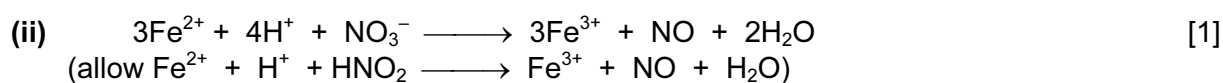
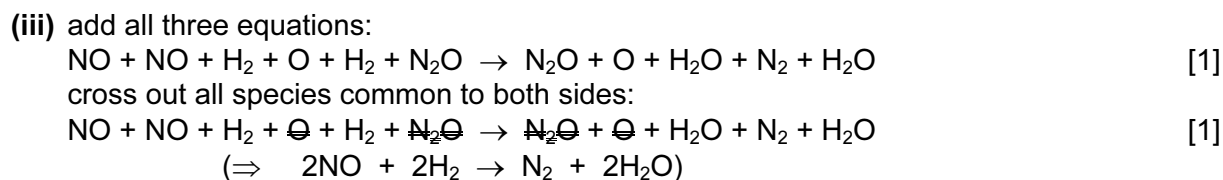
[Total: 12]

2. (a) (i)

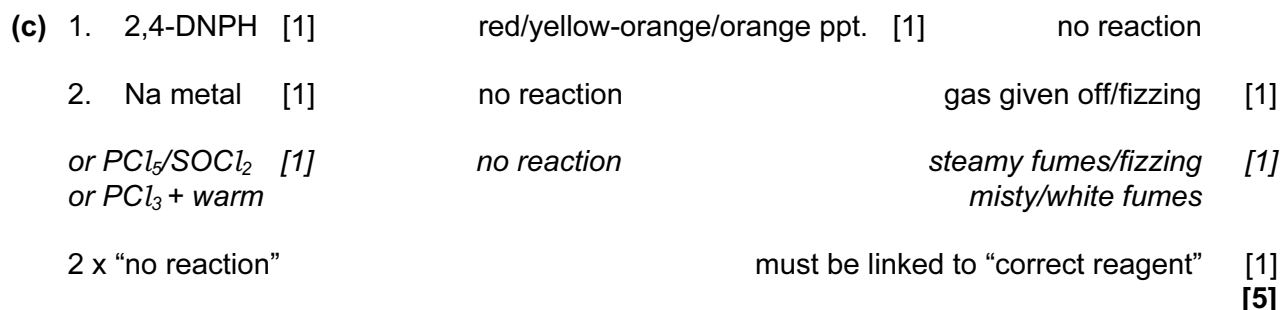
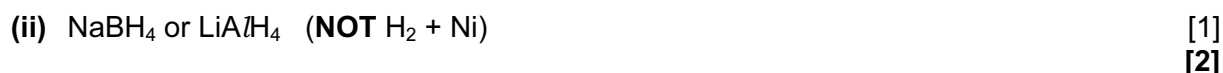
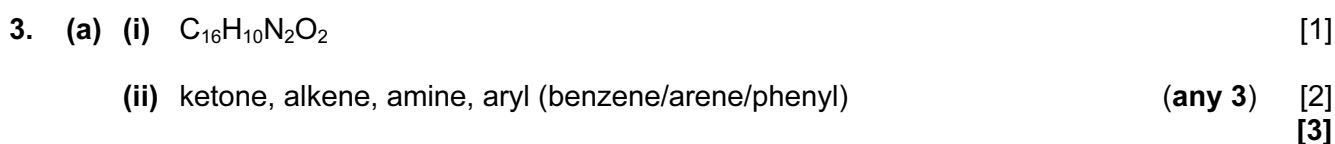


- (ii) -180 kJ mol^{-1} [1]
- (iii) (formation of NO is endothermic) so high T **and** equilibrium pushed over to NO side.
or high T **and** needed to break N-N bond in N₂ [1]
- (iv) $-180 = 2 E(\text{NO}) - 994 - 496$ [1]
 $E(\text{NO}) = \mathbf{+655 \text{ kJ mol}^{-1}}$ [1]
[5]
- (b) (i) (from 1 and 2:) as p(NO) halves, rate decreases to 1/4, **so order = 2** [1]
(from 1 and 3:) as p(H₂) halves, so does rate, **so order = 1** [1]
- (ii) rate = $k p_{\text{NO}}^2 \cdot p_{\text{H}_2}$ [1]
units (of k) are $\text{atm}^{-2} \text{ s}^{-1}$ [1]

Page 3	Mark Scheme: Teachers' version	Syllabus	Paper
	GCE AS/A LEVEL – May/June 2012	9701	41

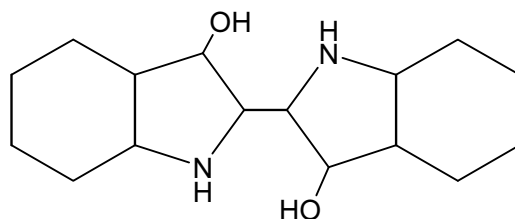


[Total:17]



Page 4	Mark Scheme: Teachers' version	Syllabus	Paper
	GCE AS/A LEVEL – May/June 2012	9701	41

(d) (i)



[1]

(ii) $M_r = 262$, so $2.5 \text{ g} = 2.5/262 = 9.54 \times 10^{-3} \text{ mol}$

[1]

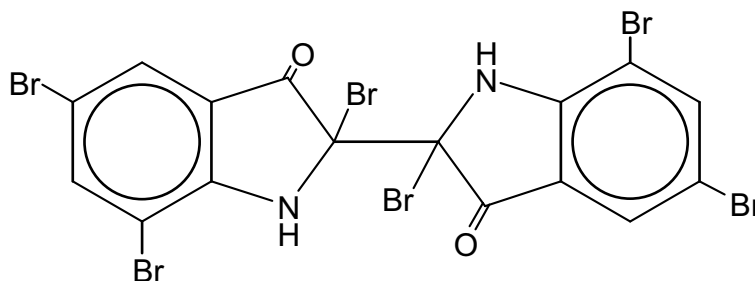
(1 mol indigo absorbs 9 mol of H_2)

so volume of $\text{H}_2 = 9 \times 24 - 9.54 \times 10^{-3} = 2.06 \text{ dm}^3$ (2060 cm^3)

[1]

[3]

(e)



2 x Br on **C=C** [1]

a Br on each ring [1]

TWO non-adjacent Br on **each ring** [1]

[3]

[Total: 16]

4 (a) (i) volatilities decrease down the group

[1]

due to greater van der Waals (VDW) forces (*intermolecular is not sufficient*)

[1]

due to larger no of electrons

[1]

(ii) CCl_4 does not react with water

[1]

CCl_4 unreactive due to no **d**-orbitals

[1]

GeCl_4 **and** PbCl_4 hydrolyse/react

[1]

$\text{MCl}_4 + 2\text{H}_2\text{O} \longrightarrow \text{MO}_2 + 4\text{HCl}$ (M = Ge or Pb)

[1]

[7]

Page 5	Mark Scheme: Teachers' version	Syllabus	Paper
	GCE AS/A LEVEL – May/June 2012	9701	41

(b) (i) B is PbSO₄ **and** C is PbCl₂ [1]

(ii) SnO₂ + 2H₂SO₄ → Sn(SO₄)₂ + 2H₂O [1]

PbO₂ + H₂SO₄ → PbSO₄ + H₂O + ½ O₂ [1]

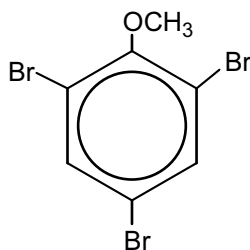
PbO₂ + 6HCl → H₂PbCl₆ + 2H₂O [1]

H₂PbCl₆ → PbCl₂ + 2HCl + Cl₂ [1]

[5 max 4]

[Total: 11]

5 (a) (i)

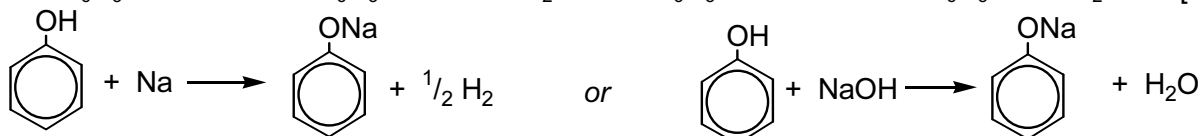


[1]

(ii) Na metal or NaOH [1]

Fizzes/gas given off with phenol or phenol dissolves (anisole doesn't) [1]

C₆H₅OH + Na → C₆H₅ONa + ½ H₂ or C₆H₅OH + OH⁻ → C₆H₅O⁻ + H₂O [1]



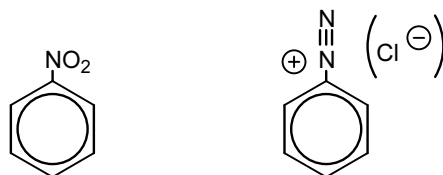
(neutral) iron(III) chloride [1]

Solution goes purple/violet [1]

3C₆H₅OH + FeCl₃ → Fe(OC₆H₅)₃ + 3HCl [1]

[4]

(b) (i)



D

E

[1] + [1]

(ii) step 2: Sn + HCl **NOT** LiAlH₄, NaBH₄ [1]

conc. + reflux (*warm is insufficient*) [1]

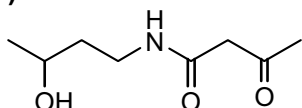
step 4 is conditional of structure E

step 4: warm + in H₂O [1]

[5 max 4]

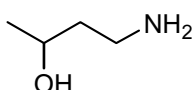
Page 6	Mark Scheme: Teachers' version	Syllabus	Paper
	GCE AS/A LEVEL – May/June 2012	9701	41

(c) (i)

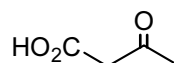


F

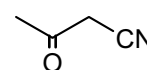
F must be an **amide**



G



H



J

[4]

- (ii) reaction 1: $H_2 + Ni$ or $LiAlH_4$
 reaction 2: heat + aqueous HCl

[1]

[1]

[6]

[Total: 14]

6 (a) (i) Condensation

[1]

(ii) ala-ala, gly-gly, ala-gly

[2]

[3]

(b) (i) Correct sugar-phosphate backbones
 (with **two sugars and one phosphate attached**)

[1]

C – G pair correct **or** A – T pair correct

[1]

deoxyribose label **and** all bases coming from sugars

[1]

(ii) Replication would be slower/difficult
 because the DNA/strands could not be separated

[1]

[4]

(c) (i) Some amino acids have more than one (triplet) code

[1]

(ii) loss/disruption of ionic bonding/hydrogen bonding

[1]

(iii) There would be a potential loss of all tertiary structure
or
frameshift – deletion of a base changes protein structure

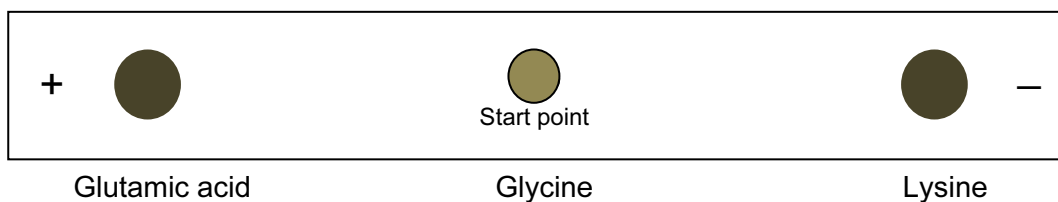
[1]

[3]

[Total: 10]

Page 7	Mark Scheme: Teachers' version	Syllabus	Paper
	GCE AS/A LEVEL – May/June 2012	9701	41

7 (a)



- Glutamic acid between + and start point [1]
 Lysine between – and start point [1]
 Glycine at, or very close to, start point [1]
[3]

(b) (i) Ratio of the concentration of a solute in each of two solvents
 or equilibrium constant representing the distribution of a solute between two solvents. [1]

(ii) illustration of some method of getting into our body via the food chain [1]

They dissolve preferentially in fats/oils [1]
[3]

- (c) (i) $156 = \text{C}_3\text{H}_6^{35}\text{Cl}^{79}\text{Br}^+$ [1]
 $158 = \text{C}_3\text{H}_6^{37}\text{Cl}^{79}\text{Br}^+$ [1]
 $158 = \text{C}_3\text{H}_6^{35}\text{Cl}^{81}\text{Br}^+$ [1]
 $160 = \text{C}_3\text{H}_6^{37}\text{Cl}^{81}\text{Br}^+$ [1]

(ii) $m/e = 15$ Species = CH_3^+ [1]
[5 max 4]

[Total: 10]

