

Surname	Centre Number	Candidate Number
Other Names		2



GCE AS/A level

1072/01

BIOLOGY – BY2

A.M. MONDAY, 3 June 2013

1½ hours

For Examiner's use only		
Question	Maximum Mark	Mark Awarded
1.	8	
2.	13	
3.	13	
4.	12	
5.	5	
6.	9	
7.	10	
Total	70	

ADDITIONAL MATERIALS

In addition to this paper you may require a calculator and a ruler.

INSTRUCTIONS TO CANDIDATES

Use black ink or black ball-point pen. Do not use pencil or gel pen. Do not use correction fluid.

Write your name, centre number and candidate number in the spaces at the top of this page.

Answer **all** questions.

Write your answers in the spaces provided in this booklet. If you run out of space, use the continuation pages at the back of the booklet, taking care to number the question(s) correctly.

INFORMATION FOR CANDIDATES

The number of marks is given in brackets at the end of each question or part-question.

You are reminded of the necessity for good English and orderly presentation in your answers.

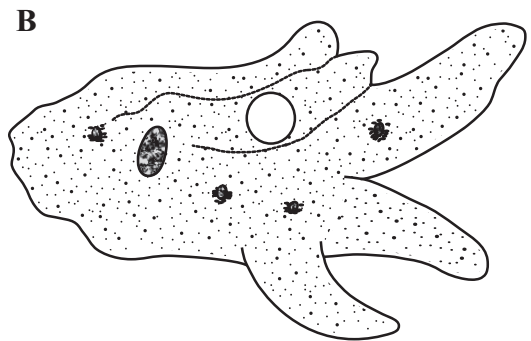
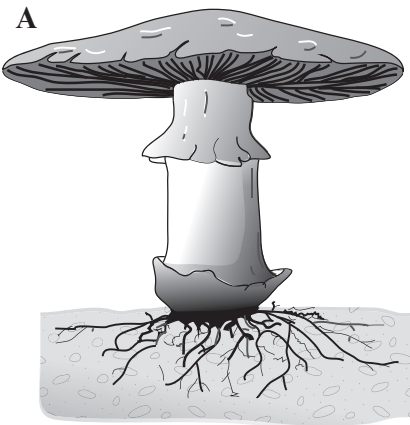
The quality of written communication will affect the awarding of marks.



1. (a) Complete the table on classification given below. [4]

Kingdom	Phylum	Class	Genus
	Angiosperm	Dicotyledons	Ranunculus (Buttercup)
Animalia		Oligochaetae	Lumbricus (Earthworm)
Animalia		Mammalia	Rattus (Rat)
Animalia	Arthropoda		Locusta (Locust)

(b) The diagrams, **A** and **B** below, show two organisms from **two** other Kingdoms *not* given in the table.



(i) Name the **two** Kingdoms to which the two organisms belong. [2]

A

B

(ii) State **one** characteristic of each organism which is a feature of its Kingdom. [2]

A

B



2. (a) Plants carry out the process of transpiration.

State what is meant by the term *transpiration*.

[2]

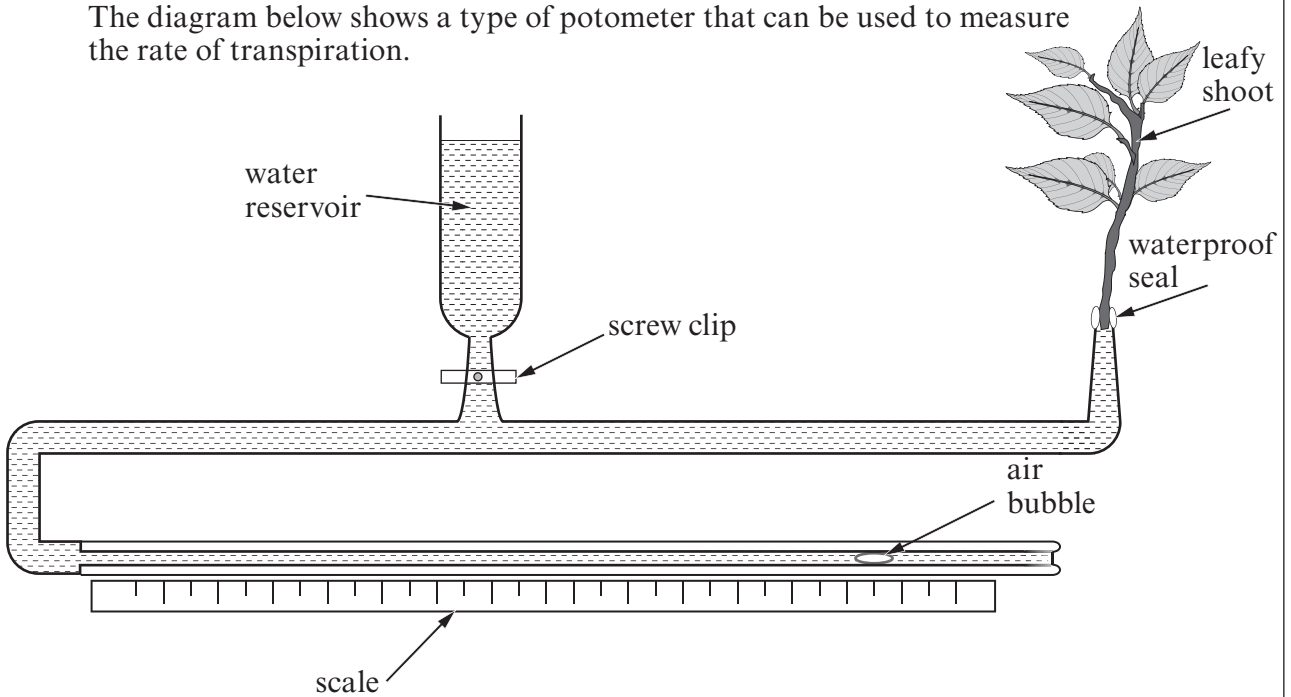
.....

.....

.....

.....

The diagram below shows a type of potometer that can be used to measure the rate of transpiration.



(b) State **two** practical measures which should be taken when setting up the apparatus to ensure the potometer functions correctly. Give reasons for your answers. [4]

.....

.....

.....

.....

.....

1072 010003



(c) Water passes through the xylem of the root and stem of a plant before reaching its leaves.

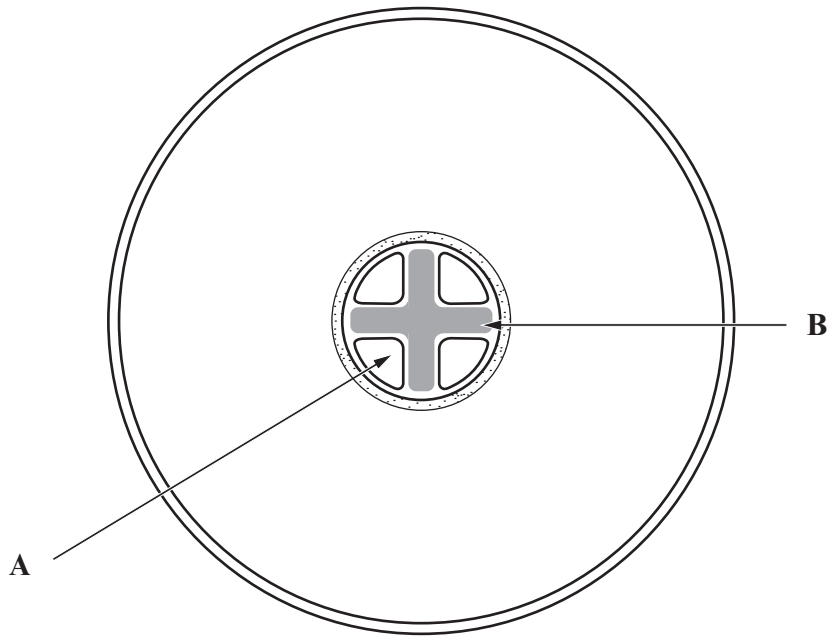
(i) Name the original source of energy that moves water through a plant. [1]

.....

(ii) Explain how water moves up the xylem. [2]

.....

(d) The diagram below shows the cross section of a root.



(i) Name the **two** tissues labelled **A** and **B** on the diagram above. [2]

A **B**

(ii) Explain how it is possible to tell that the diagram above is of a root and not a stem. [2]

.....



3. (a) Describe and explain the process of **inspiration** in a mammal.

[4]

.....

.....

.....

.....

.....

.....

.....

.....

(b) (i) Explain how counter current flow works in the gills of bony fish.

[4]

.....

.....

.....

.....

.....

.....

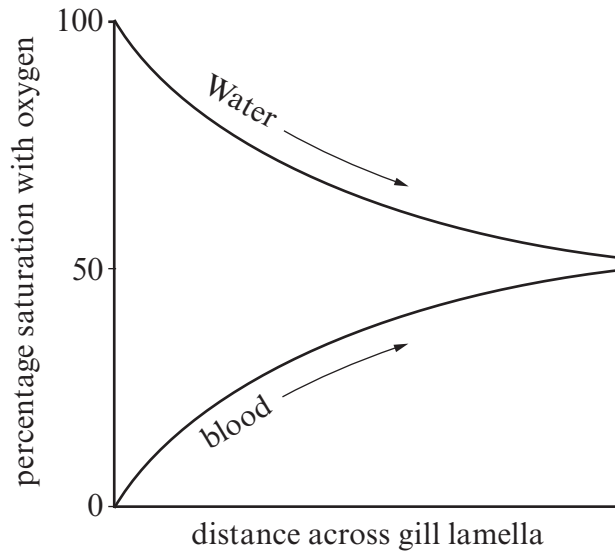
.....

.....

1072
010005



The graph below shows another type of flow.



(ii) Name the type of flow shown in the graph above. [1]

.....

(iii) Explain why this is less efficient than counter current flow. [2]

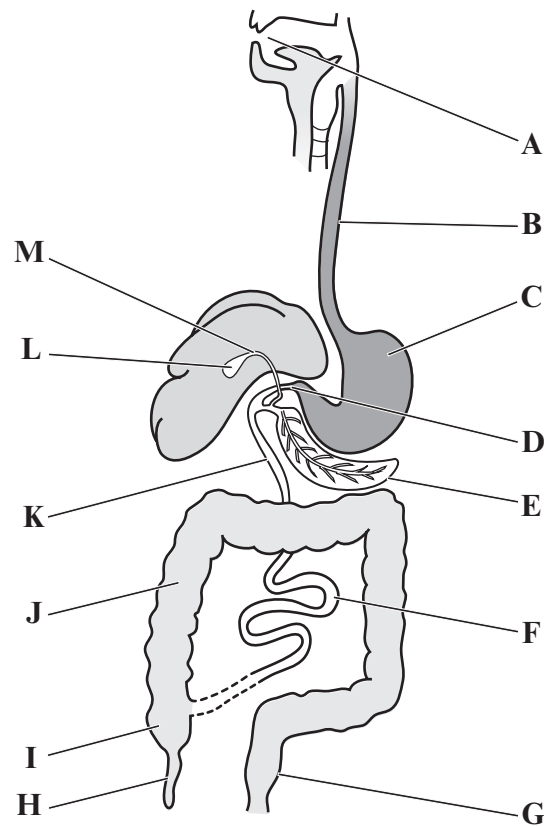
.....
.....
.....
.....
.....

(c) Suggest why gill filaments/ lamellae would not provide an efficient gas exchange surface on land. [2]

.....
.....
.....
.....
.....



4. The diagram below shows the human alimentary canal.

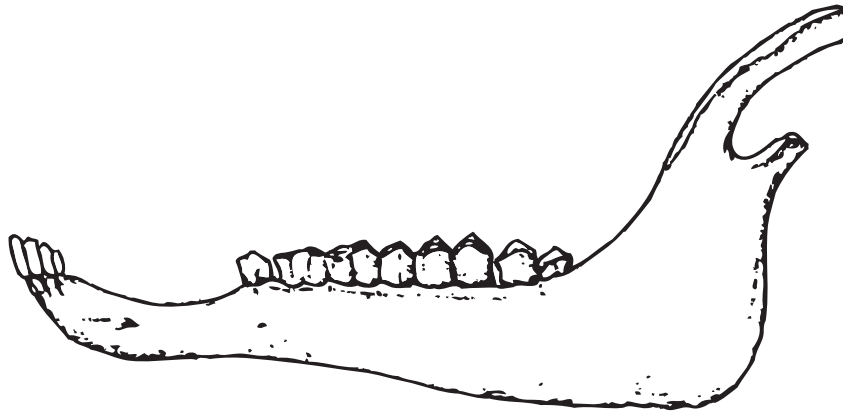


(a) Use a letter or letters from the diagram above to answer the following questions. [6]

(i)	Which is the most acidic region of the alimentary canal?	
(ii)	In which two areas are proteins, carbohydrates and lipids digested together?	
(iii)	Where does the process of protein digestion begin?	
(iv)	Where is the main site of lipase production?	
(v)	The section of the alimentary canal where most absorption of digested products occurs.	
(vi)	The section of the alimentary canal whose main function is to absorb water.	



The diagram below shows the lower jaw of a mammal.



(b) Use the information in the diagram above to:

(i) State the name given to describe the mode of nutrition of this mammal. [1]

.....

(ii) Explain how the jaw and teeth shown above are adapted for this mode of nutrition. [3]

.....
.....
.....
.....
.....
.....
.....
.....

(iii) Explain how the **gut** of this mammal is adapted for digestion. [2]

.....
.....
.....
.....
.....



5. The tapeworm, *Taenia solium*, is a parasite of humans.

(a) State what is meant by the term *parasite*. [2]

.....

.....

.....

.....

The tapeworm consists of a head with no mouth, followed by a large number of thin flat segments called proglottids.

(b) Describe how the tapeworm is adapted to obtain its nutrients. [3]

.....

.....

.....

.....

.....

.....

.....

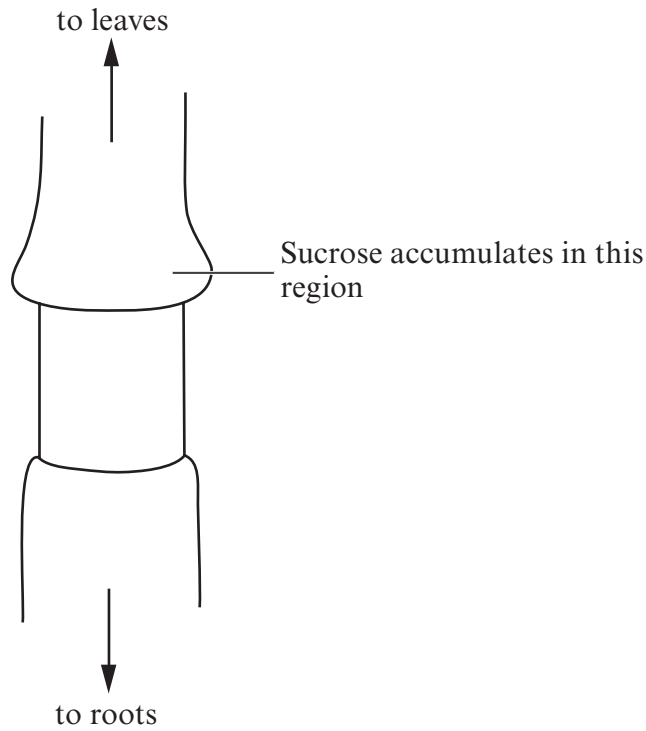
1072
010009

5



6. (a) The diagram below shows part of a plant stem with the tissue external to the xylem removed, a technique known as ringing.

An accumulation of sucrose was found in the region shown.



- (i) Explain why this accumulation of sucrose occurred. [3]

.....

.....

.....

.....

.....

.....

.....

- (ii) Name **one** other type of organic molecule that is likely to accumulate with the sucrose. [1]

.....



(b) If the growing points of the shoot of the plant are removed there is a greater accumulation of sucrose.

Explain why there is a greater accumulation of sucrose. [2]

.....

.....

.....

.....

.....

.....

(c) Explain fully the likely effect of the removal of the ring of tissue on the concentration of sucrose **below** the ring. [3]

.....

.....

.....

.....

.....

.....

.....

9



Examiner
only

A large rectangular area with a solid top and bottom border and a dotted line border on the left and right sides. The interior is filled with horizontal dotted lines, providing a space for writing.



Examiner
only

Area with horizontal dotted lines for writing.

END OF PAPER

10



