



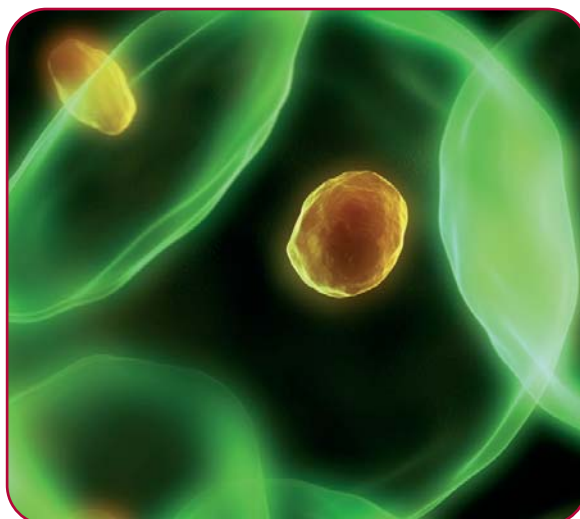
# AS/A Level Biology

(Available for teaching from September 2008)

**This specification has been written for students who wish to continue their study of Biology after GCSE.**

It has been designed to enable centres to deliver the Units using the framework provided or to design a custom course.

The specification is divided into topics, each covering different key concepts in Biology. Applications of biology are covered throughout the specification.



## **What are the benefits to me and my students of delivering this OCR specification?**

- The specification has been developed in consultation with teachers, universities, research organisations (such as the Sanger Institute) and professional bodies (the Biosciences Federation and the Institute of Biology).
- The specification is based upon the existing successful GCE Biology specification.
- There is less emphasis on recall and more on understanding and application.
- Units F211 and F214 are designed to give you the opportunity to enter candidates in the January examination series.
- All four externally assessed units are offered in the January and June series.
- There is straightforward assessment of practical skills using OCR-set tasks and (non-hierarchical) mark schemes.
- You will have a choice of tasks to use to assess practical skills.

## AS Level

Mandatory/Optional?	Unit title and description	Assessment method and weighting
Mandatory	<b>F211: Cells, Exchange and Transport</b> <ul style="list-style-type: none"> <li>• Cells</li> <li>• Exchange and Transport</li> </ul>	<b>1 hour written exam</b> <b>AS Level – 30%</b> <b>A Level – 15%</b>
Mandatory	<b>F212: Molecules, Biodiversity, Food and Health</b> <ul style="list-style-type: none"> <li>• Biological Molecules</li> <li>• Enzymes</li> <li>• Biodiversity and Classification</li> <li>• Variation, Adaptation and Evolution</li> <li>• Human Interactions</li> </ul>	<b>1 hour 45 mins written exam</b> <b>AS Level – 50%</b> <b>A Level – 25%</b>
Mandatory	<b>F213: Practical Skills in Biology 1</b> <ul style="list-style-type: none"> <li>• Internal assessment of practical skills</li> </ul>	<b>Internal assessment</b> <b>AS Level – 20%</b> <b>A Level – 10%</b>

## A2 Level

Mandatory/Optional?	Unit title and description	Assessment method and weighting
Mandatory	<b>F214: Communications, Homeostasis and Energy</b> <ul style="list-style-type: none"> <li>• Communication</li> <li>• Nerves and Hormones</li> <li>• Excretion</li> <li>• Photosynthesis and Respiration</li> </ul>	<b>1 hour written exam</b> <b>A Level – 15%</b>
Mandatory	<b>F215: Control, Genomes and Environment</b> <ul style="list-style-type: none"> <li>• Cellular Control</li> <li>• Biotechnology</li> <li>• Ecosystems and Sustainability</li> <li>• Responding to the Environment</li> </ul>	<b>1 hour 45 mins written exam</b> <b>A Level – 25%</b>
Mandatory	<b>F216: Practical skills in Biology 2</b> <ul style="list-style-type: none"> <li>• Internal assessment of practical skills</li> </ul>	<b>Internal assessment</b> <b>A Level – 10%</b>

### How is this qualification assessed?

Four Units (two at AS, two at A2) are externally assessed through written examinations.

Two Units (one at AS, one at A2) are internally assessed, moderated by post Units, and will assess students' practical skills. The assessment uses OCR-set tasks and mark schemes.

Practical skills units are available in the June series only.

### Dates of first examinations

#### AS

January 2009 - Cells, Exchange and Transport

June 2009 - Molecules, Biodiversity and Human Interactions, Practical Skills in Biology 1

#### A2

January 2010 - Communications, Homeostasis and Energy

June 2010 - Control, Genomes and Environment, Practical Skills in Biology 2

### What support will I receive?

#### Training

A variety of INSET courses will be available to prepare centres for the changeover and to support teachers and students after September 2008.

#### Publishers

Developed in close consultation with OCR, Heinemann is publishing materials for the 2008 A Level Biology specification.

#### Resources

You will be able to download all the following resources from the OCR website – [www.ocr.org.uk](http://www.ocr.org.uk).

- Sample Assessment Material
- Schemes of Work
- Teachers' and Technicians' guide.

For more information please contact the OCR Customer Contact Centre on **01223 553998**, or visit [www.ocr.org.uk](http://www.ocr.org.uk)