

**OXFORD CAMBRIDGE AND RSA EXAMINATIONS
ADVANCED GCE**

F215

BIOLOGY

Control, Genomes and Environment

INSERT

WEDNESDAY 16 JUNE 2010: Morning

DURATION: 1 hour 45 minutes

SUITABLE FOR VISUALLY IMPAIRED CANDIDATES

INFORMATION FOR CANDIDATES

- **This insert contains Fig. 3.1, Fig. 3.2 and Table 5.1.**

INSTRUCTIONS FOR EXAMS OFFICER/INVIGILATOR

- **Do not send this insert for marking; it should be retained in the Centre or destroyed.**

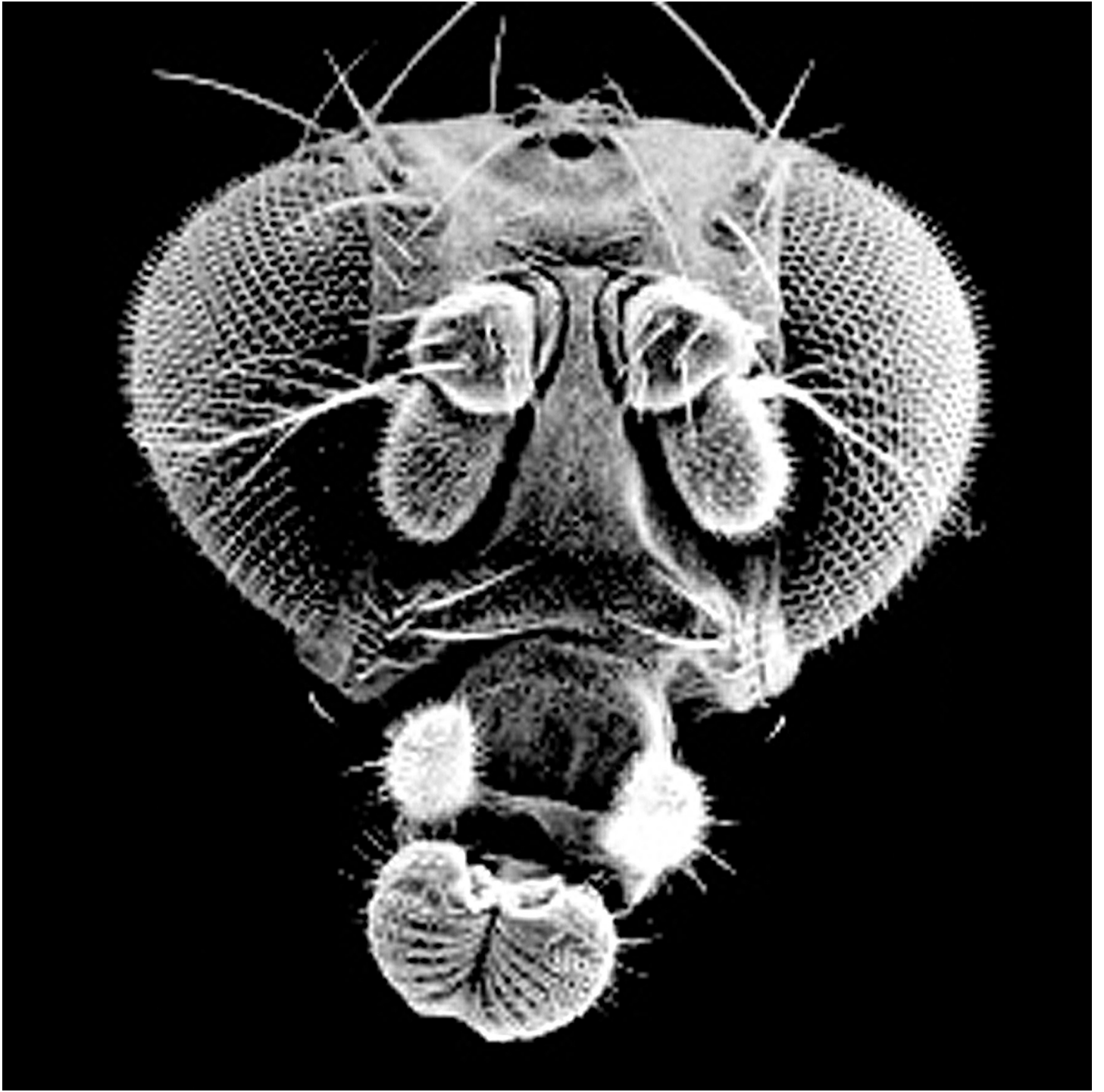


FIG. 3.1

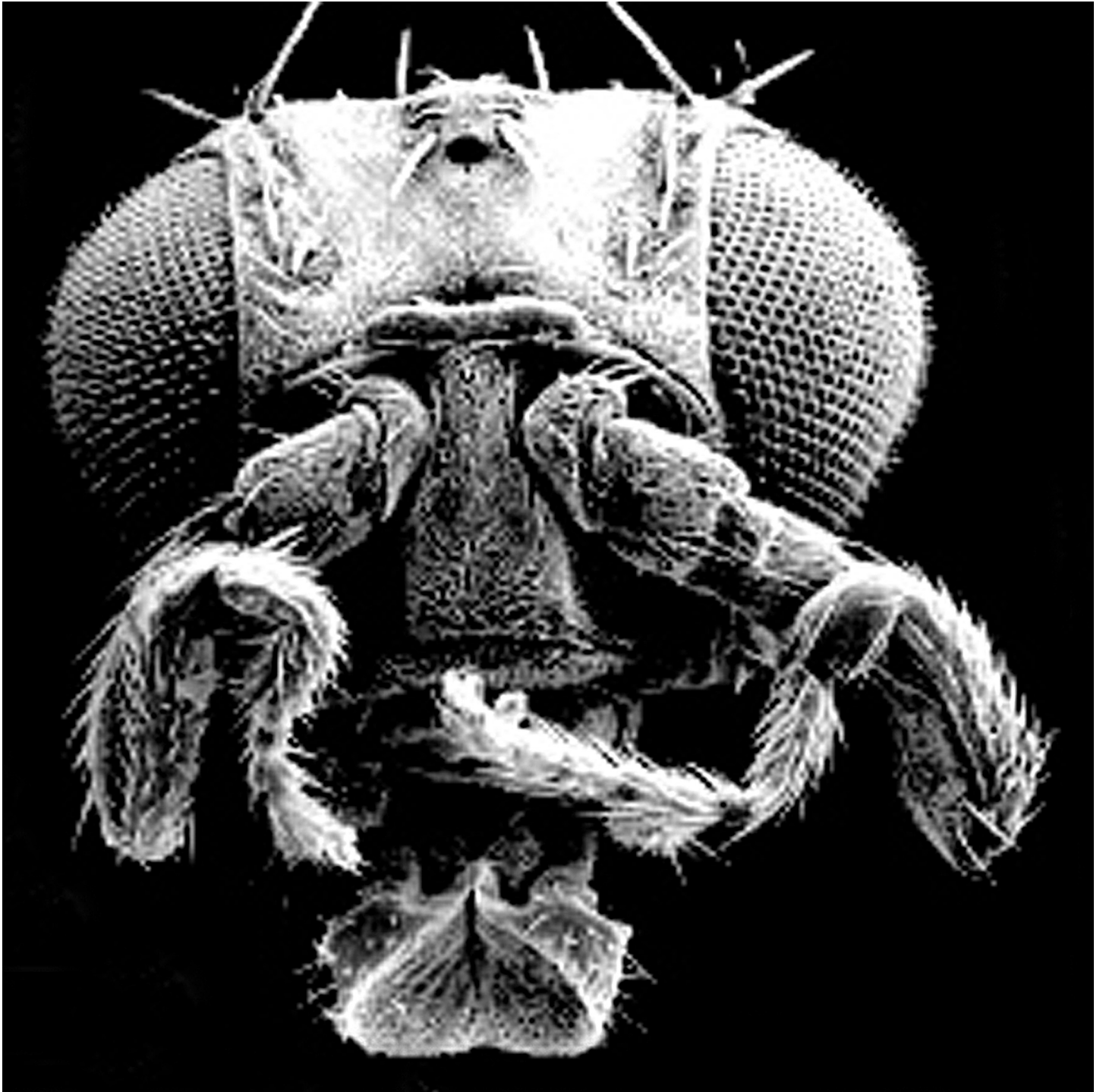


FIG. 3.2

TABLE 5.1

| mammal | mean number of animals per km² | | | |
|------------------------------------|--|----------------------------------|--------------------------------|---------------------------------|
| | before logging | immediately after logging | two years after logging | four years after logging |
| marbled cat | present | 0 | 0 | 0 |
| oriental small-clawed otter | present | 0 | 0 | 0 |
| giant squirrel | 5 | 1 | 4 | 1 |
| small squirrel | 16 | 24 | 104 | 19 |
| tree shrew | 10 | 5 | 10 | 38 |
| barking deer | 3 | 1 | 10 | present |

BLANK PAGE

BLANK PAGE

BLANK PAGE



Copyright Information

OCR is committed to seeking permission to reproduce all third-party content that it uses in its assessment materials. OCR has attempted to identify and contact all copyright holders whose work is used in this paper. To avoid the issue of disclosure of answer-related information to candidates, all copyright acknowledgements are reproduced in the OCR Copyright Acknowledgements Booklet. This is produced for each series of examinations, is given to all schools that receive assessment material and is freely available to download from our public website (www.ocr.org.uk) after the live examination series.

If OCR has unwittingly failed to correctly acknowledge or clear any third-party content in this assessment material, OCR will be happy to correct its mistake at the earliest possible opportunity.

For queries or further information please contact the Copyright Team, First Floor, 9 Hills Road, Cambridge CB2 1GE.

OCR is part of the Cambridge Assessment Group; Cambridge Assessment is the brand name of University of Cambridge Local Examinations Syndicate (UCLES), which is itself a department of the University of Cambridge.