



INSTRUCTIONS TO CANDIDATES

- This insert contains Fig. 2.1 and Fig. 2.2.
- Fig. 2.1 and Fig. 2.2 are electronmicrographs of chloroplasts.

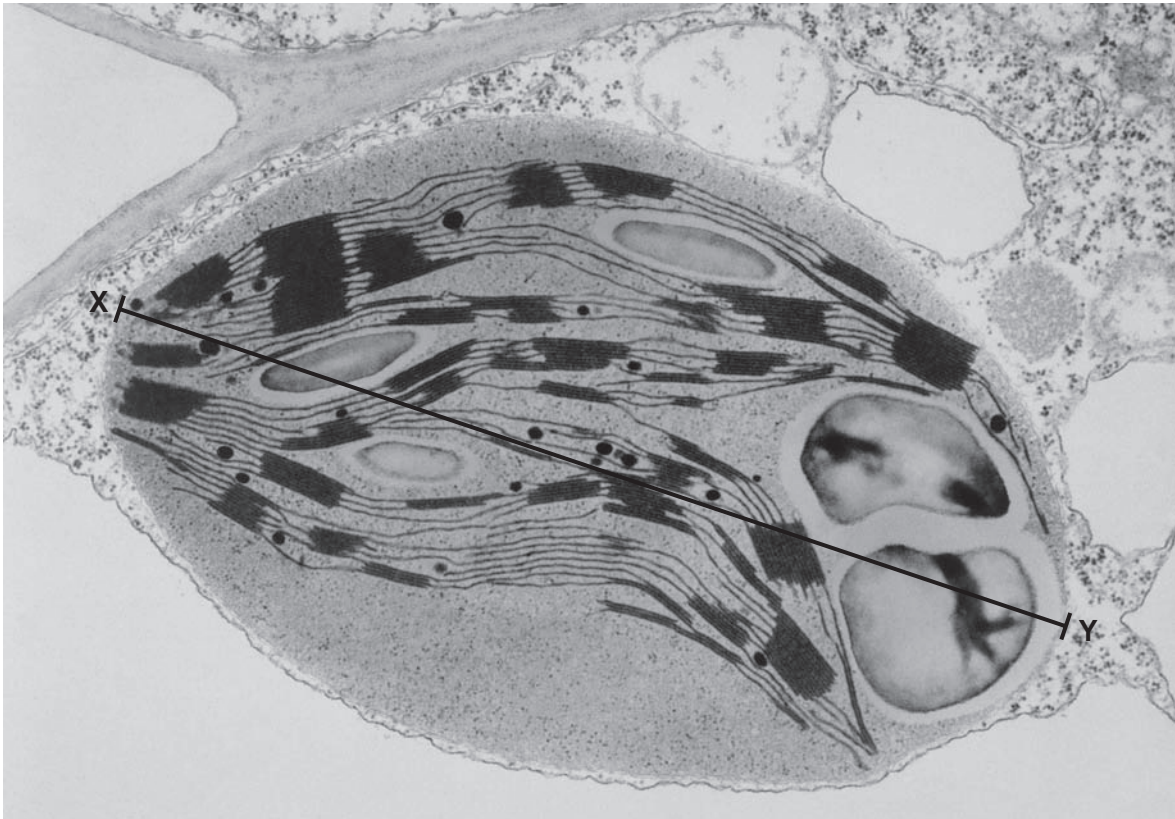
Copyright Acknowledgements:

Fig. 2.1 © Biophoto Associates / Science Photo Library
Fig. 2.2 © Michael W. Clayton / University of Wisconsin System, www.wisconsin.edu

Permission to reproduce items where third-party owned material protected by copyright is included has been sought and cleared where possible. Every reasonable effort has been made by the publisher (OCR) to trace copyright holders, but if any items requiring clearance have unwittingly been included, the publisher will be pleased to make amends at the earliest possible opportunity.

OCR is part of the Cambridge Assessment Group. Cambridge Assessment is the brand name of University of Cambridge Local Examinations Syndicate (UCLES), which is itself a department of the University of Cambridge.

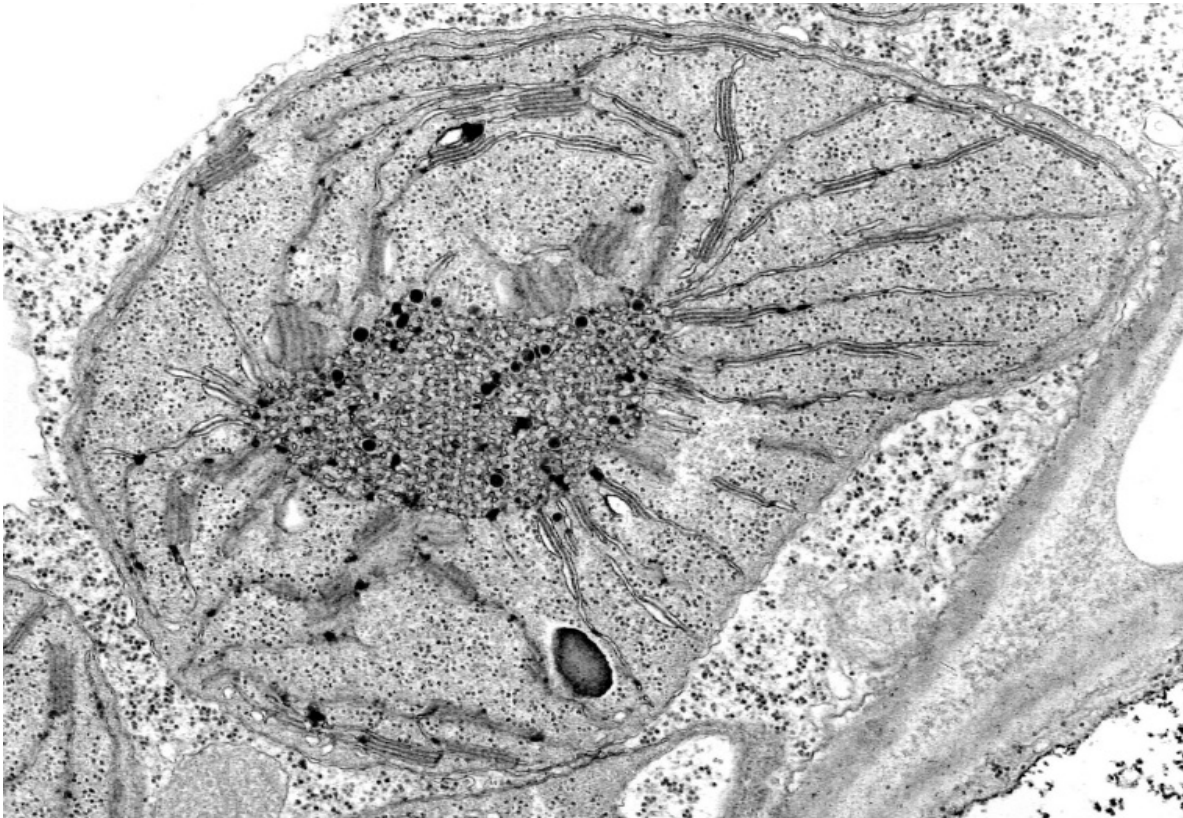
This document consists of **2** printed pages.



© Biophoto Associates / Science Photo Library

X 15,000

Fig. 2.1 Chloroplast from a leaf kept in full light



© Michael W. Clayton / University of Wisconsin System

Fig. 2.2 Chloroplast from a leaf kept in the dark