

**ADVANCED SUBSIDIARY GCE  
BIOLOGY**

**2803/03**

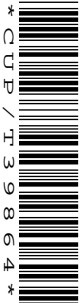
Practical Examination 1 (Part B – Practical Test)

**INSERT**

**WEDNESDAY 9 JANUARY 2008**

Morning

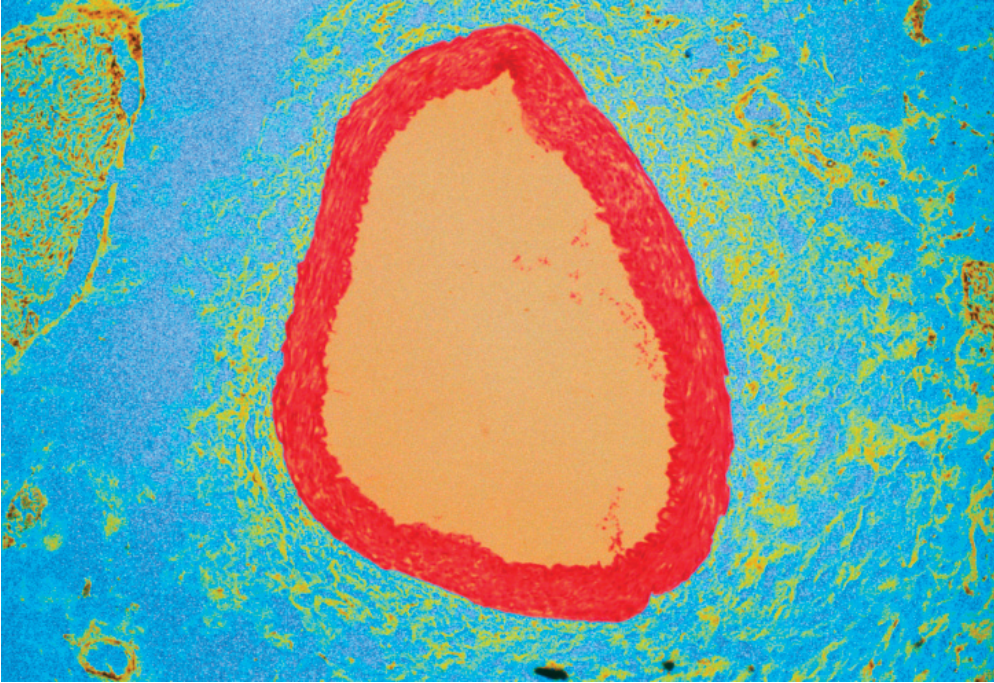
Time: 1 hour 30 minutes



**INSTRUCTIONS TO CANDIDATES**

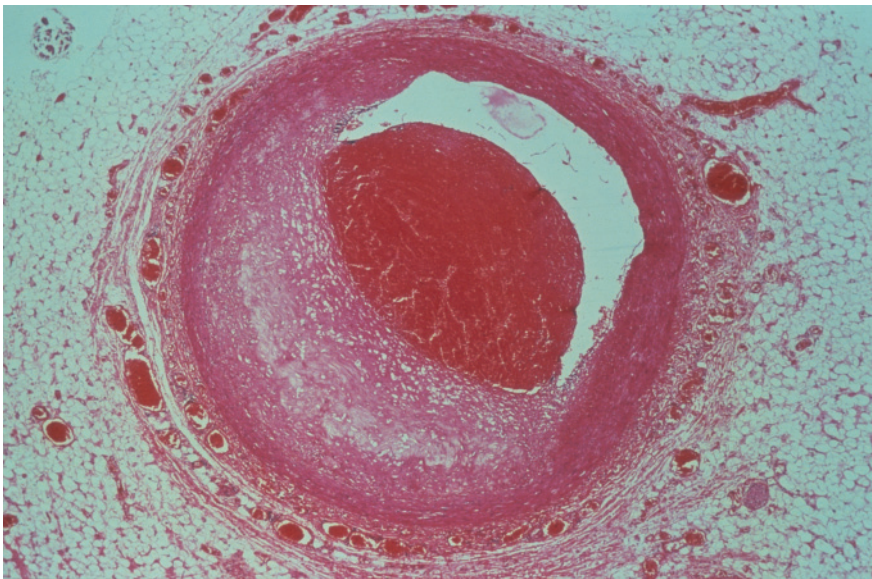
- This insert contains Fig. 2.1 and Fig. 2.2.
- Fig. 2.1 and Fig. 2.2 are photomicrographs of coronary arteries from a human heart.

This document consists of **2** printed pages.



© Science Photo Library

**Fig. 2.1**



© Biophoto Associates/Science Photo Library

**Fig. 2.2**

*Fig. 2.1 and Fig. 2.2 are the same magnification.*

---

*Copyright Acknowledgements:*

Fig. 2.1

© Science Photo Library

Fig. 2.2

© Biophoto Associates/Science Photo Library

Permission to reproduce items where third-party owned material protected by copyright is included has been sought and cleared where possible. Every reasonable effort has been made by the publisher (OCR) to trace copyright holders, but if any items requiring clearance have unwittingly been included, the publisher will be pleased to make amends at the earliest possible opportunity.

OCR is part of the Cambridge Assessment Group. Cambridge Assessment is the brand name of University of Cambridge Local Examinations Syndicate (UCLES), which is itself a department of the University of Cambridge.