

**OXFORD CAMBRIDGE AND RSA EXAMINATIONS
AS LEVEL**

H022/02

BIOLOGY B (ADVANCING BIOLOGY)

Biology in depth

TUESDAY 7 JUNE 2016: Afternoon
TIME ALLOWED: 1 hour 30 minutes
plus your additional time allowance

MODIFIED ENLARGED

First name		Last name	
-----------------------	--	----------------------	--

Centre number						Candidate number				
--------------------------	--	--	--	--	--	-----------------------------	--	--	--	--

YOU MUST HAVE:
the Insert

YOU MAY USE:
a scientific calculator
a ruler (cm/mm)

READ INSTRUCTIONS OVERLEAF



INSTRUCTIONS

Use black ink. You may use an HB pencil for graphs and diagrams.

Complete the boxes on the first page with your name, centre number and candidate number.

Answer ALL the questions.

Write your answer to each question in the space provided. If additional space is required, you should use the lined page(s) at the end of this booklet. The question number(s) must be clearly shown.

INFORMATION

The total mark for this paper is 70.

The marks for each question are shown in brackets [].

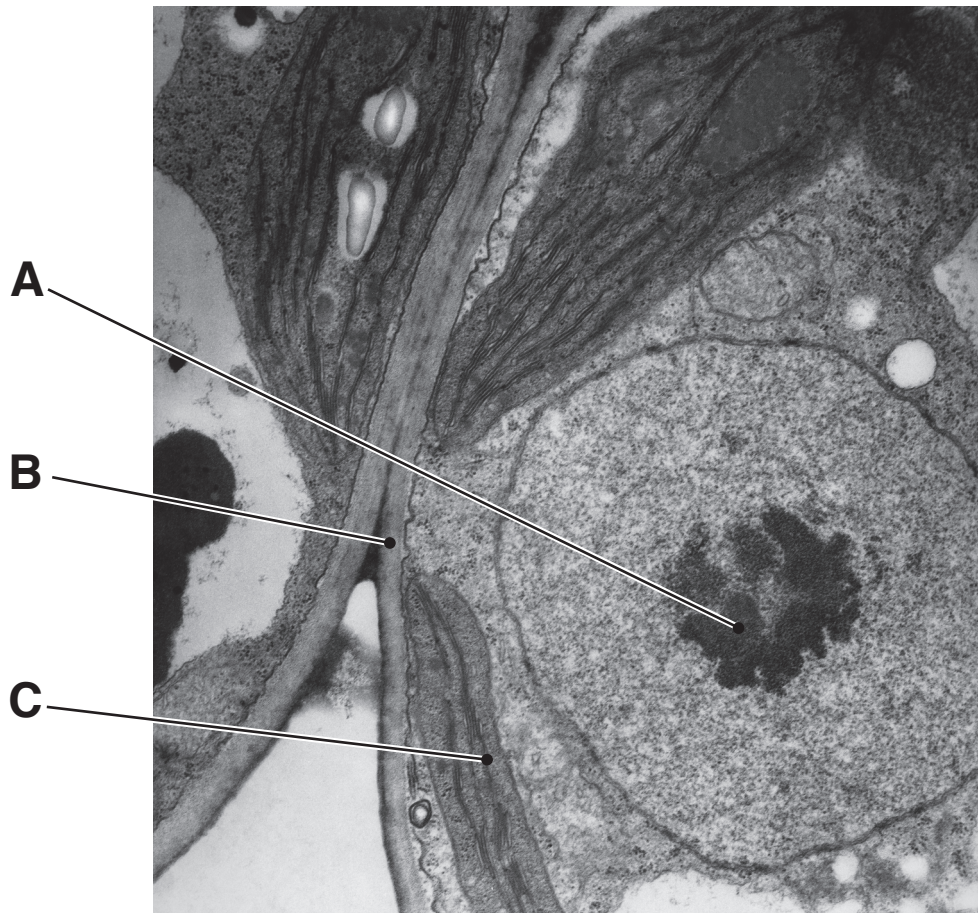
Quality of extended responses will be assessed in questions marked with an asterisk (*).

BLANK PAGE

Answer ALL the questions.

- 1 (a) The ultrastructure of plant cells has similarities and differences when compared to animal cells. Fig. 1.1 shows an electron micrograph of a cell from a dicotyledonous plant.**

Fig. 1.1



State the FUNCTION of the cell structures labelled A to C in Fig. 1.1.

A _____

B _____

C _____

[3]

- (b) (i) A light microscope was used to observe cells in the lower epidermis of a dicotyledonous leaf.

Fig. 1.2, IN THE INSERT, shows a stage micrometer and an eyepiece graticule.

The division shown on the stage micrometer measures $10\mu\text{m}$.

Calculate the length of one eyepiece graticule unit.

Show your working.

Answer = _____ μm [2]

- (ii) Fig. 1.3, IN THE INSERT, shows a stoma, guard cells and epidermal cells in the lower epidermis, as seen with a light microscope.

The magnification is the same as in Fig. 1.2.

Use the value you calculated in (b)(i) to calculate the length of the guard cell between points X and Y.

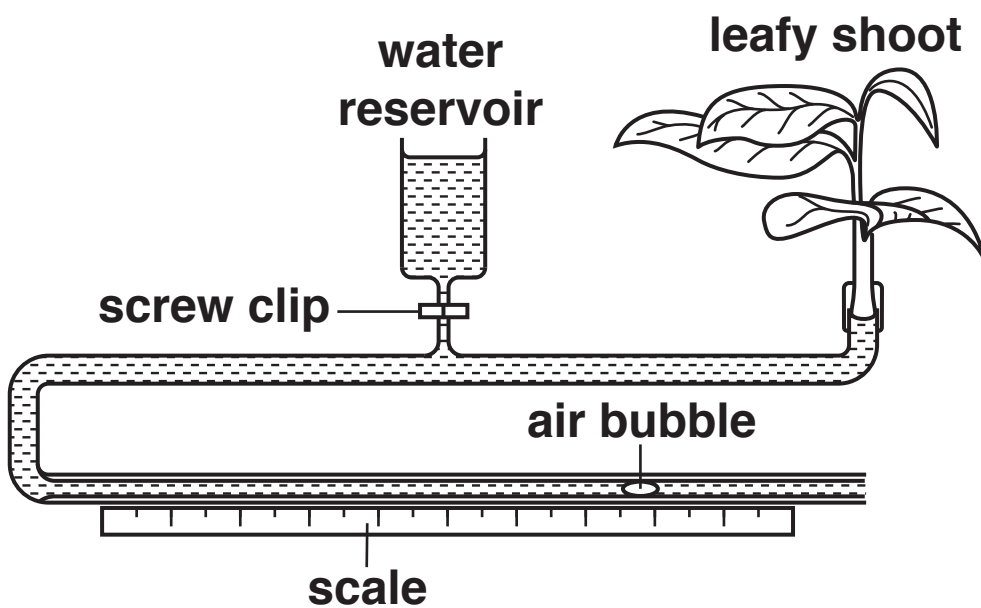
Answer = _____ μm [2]

(c) A student made the following comment:

'If most water vapour is lost from leaves through open stomata, more transpiration must happen during daylight hours.'

The student used the apparatus shown in Fig. 1.4 to test their hypothesis over a 24 hour period.

Fig. 1.4



(i) State the **DEPENDENT** variable in this investigation.

_____ [1]

- (ii) Temperature is a variable that must be controlled in the investigation to obtain valid data.

State ONE other variable and explain how it will be controlled.

Variable _____

How variable is controlled _____

[1]

(d) *Euphorbia virosa* is a species of cactus that grows in the deserts of Namibia.

It uses the guard cells to close its stomata during the hottest part of the day.

Describe the sequence of events that occur inside guard cells resulting in the opening of stomata during daylight hours AND suggest why the stomata of *E.virosa* are closed during the hottest part of the day.

[4]

2 A group of students were investigating the protein content of a sports drink used by athletes.

(a) Describe a method the students could use to confirm the presence of protein in the sports drink.

[2]

(b) The students added a protease enzyme to the sports drink to produce a solution containing amino acids.

Name the TYPE of reaction catalysed by the protease enzyme.

[1]

- (c) The students then separated the amino acids in the solution using chromatography.

Fig. 2 shows the chromatogram obtained by the students.

Fig. 2

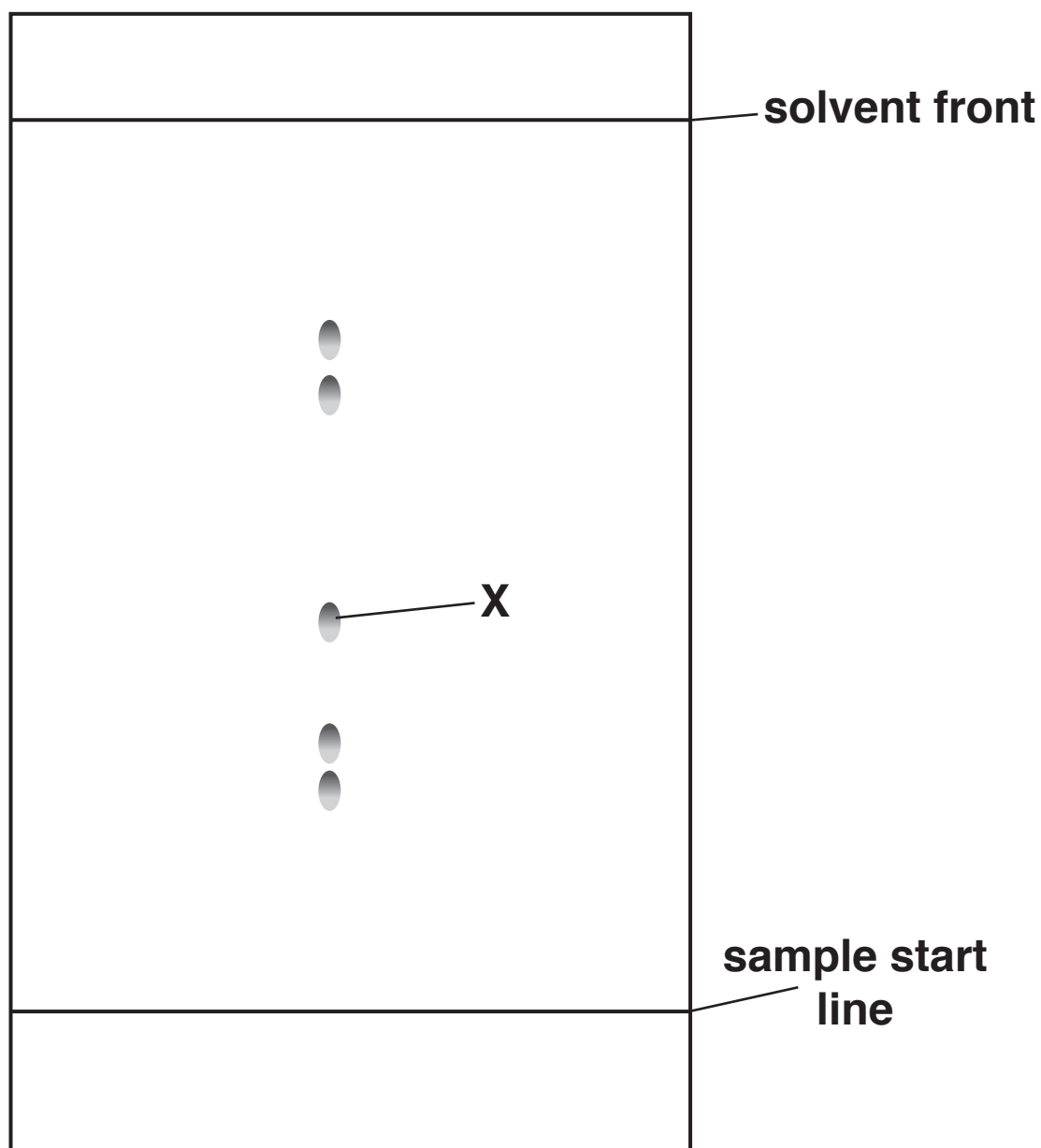


Table 2 shows R_f values for six amino acids.

Table 2

Amino acid	R_f value
asparagine	0.24
aspartic acid	0.29
isoleucine	0.73
phenylalanine	0.68
tryptophan	0.66
tyrosine	0.44

- (i) Using Fig. 2, which of the amino acids named in Table 2 could be X?**

Show working to support your answer.

X = _____ [3]

- (ii) The students were concerned that they may not be able to distinguish between the amino acids phenylalanine and tryptophan on their chromatogram.

Using the information in Table 2, suggest ONE way the procedure could be modified to determine whether both phenylalanine and tryptophan were present.

Give a reason(s) for your suggestion.

[2]

(d)*Proteases in the small intestine of an athlete will break down proteins in sports drinks.

The amino acids then enter the bloodstream and are transported to muscle cells.

In the muscle cells, amino acids are used to synthesise proteins such as myosin.

Explain how amino acids are transported to and taken up by muscle cells AND then incorporated into proteins. [6]

[illegible]

- 3 (a) The structure of the heart can be better understood through dissection.

Fig. 3.1, IN THE INSERT, shows a cross-sectional photograph of a dissected mammalian heart.

- (i) Name the parts of the heart labelled in Fig. 3.1.

M _____

N _____ [2]

- (ii) Fig. 3.2 shows a drawing of one side of the dissected heart.

Fig. 3.2



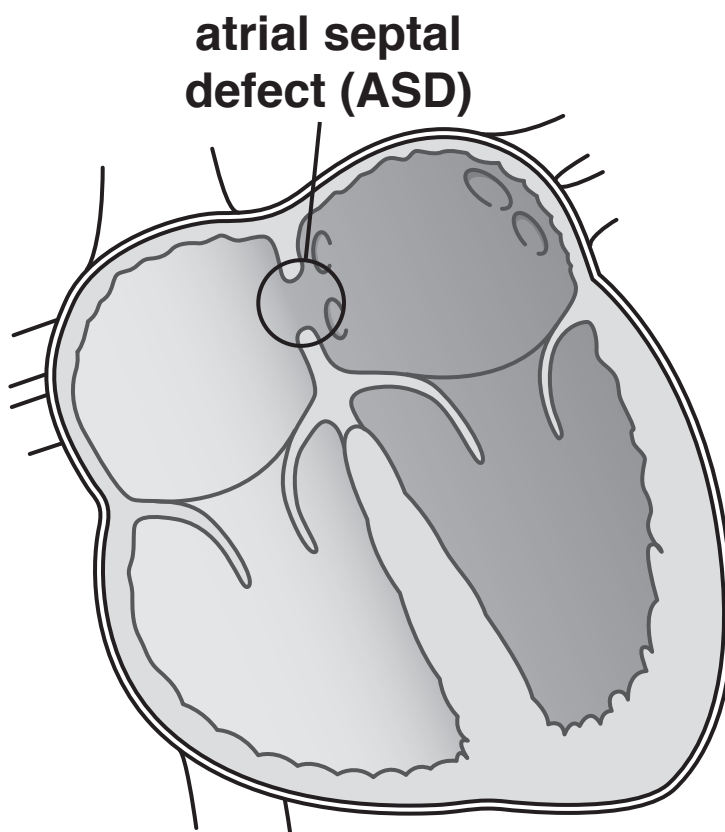
State TWO pieces of advice that could be given to improve the drawing in Fig. 3.2.

[2]

- (b) Atrial septal defect (ASD) is a condition caused when the septum of the heart has not formed correctly. This is also known as ‘a hole in the heart’ and is shown in Fig. 3.3.

In an adult with ASD, blood will leak from the left atrium into the right atrium.

Fig. 3.3



- (i) Suggest why an adult with ASD would have an increased cardiac output from the right ventricle.

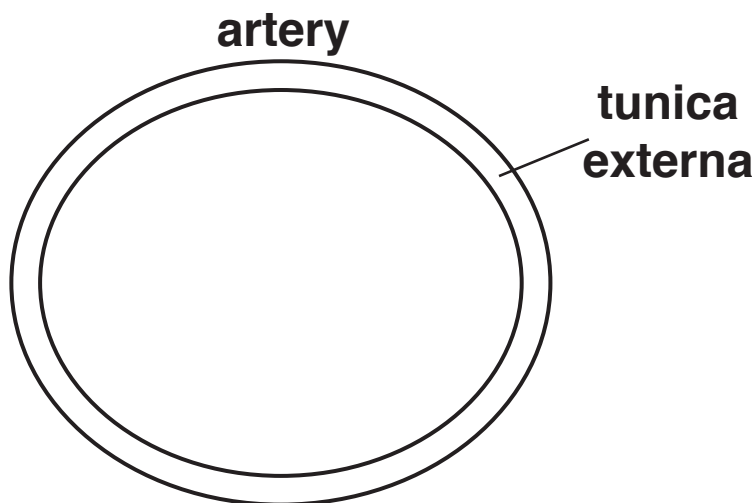
[1]

- (ii) Suggest why the muscles of an adult with ASD will fatigue more quickly.

[2]

- (c) ASD can cause the pulmonary artery to become enlarged.

Complete the diagram in the space below to show the structure of a **HEALTHY ARTERY** as seen in transverse section.

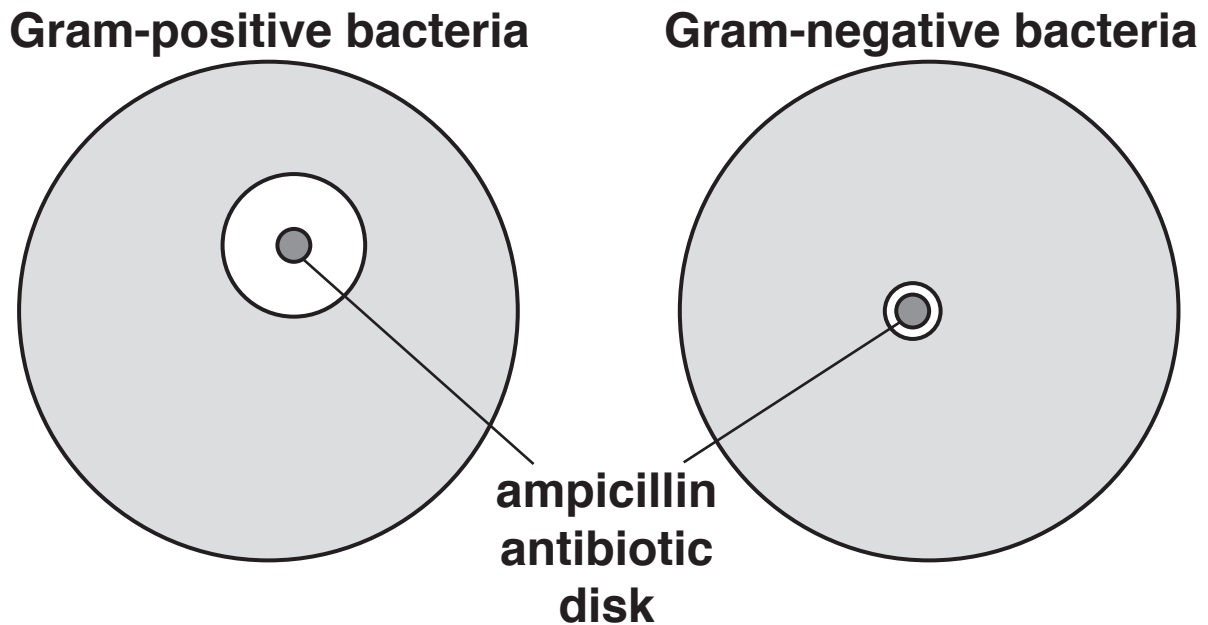


[2]

- 4 An antibiotic sensitivity test can be used to assess the effectiveness of an antibiotic against bacteria.

Fig. 4.1 shows the results of an ampicillin antibiotic resistance test on samples of Gram-positive and Gram-negative bacteria.

Fig. 4.1



- (a) Suggest why the zone of inhibition is smaller on the plate with the Gram-negative bacteria.

[2]

- (b) (i) *Streptococcus pneumoniae* is a Gram-positive bacterium commonly found in the throat of humans. These bacteria can spread from person to person and may cause pneumonia.

What name is given to a disease that is spread between different individuals?

_____ [1]

- (ii) A sample of *S. pneumoniae* was prepared for viewing under a light microscope by Gram-staining a sample taken from a colony on an agar plate.

Suggest THREE steps that should have been taken to make sure that the procedure was carried out ASEPTICALLY.

1 _____

2 _____

3 _____

[3]

(c) *Mycobacterium tuberculosis* is a bacterium that can cause TB.

Screening for TB is done using a Mantoux test.

Explain why a person who has immunity to TB develops a red, raised lump following a Mantoux test.

[3]

BLANK PAGE

- (d) Multidrug-resistant tuberculosis (MDR-TB) is a disease caused by a strain of *M. tuberculosis* that is resistant to the two most effective antibiotics, isoniazid and rifampicin.

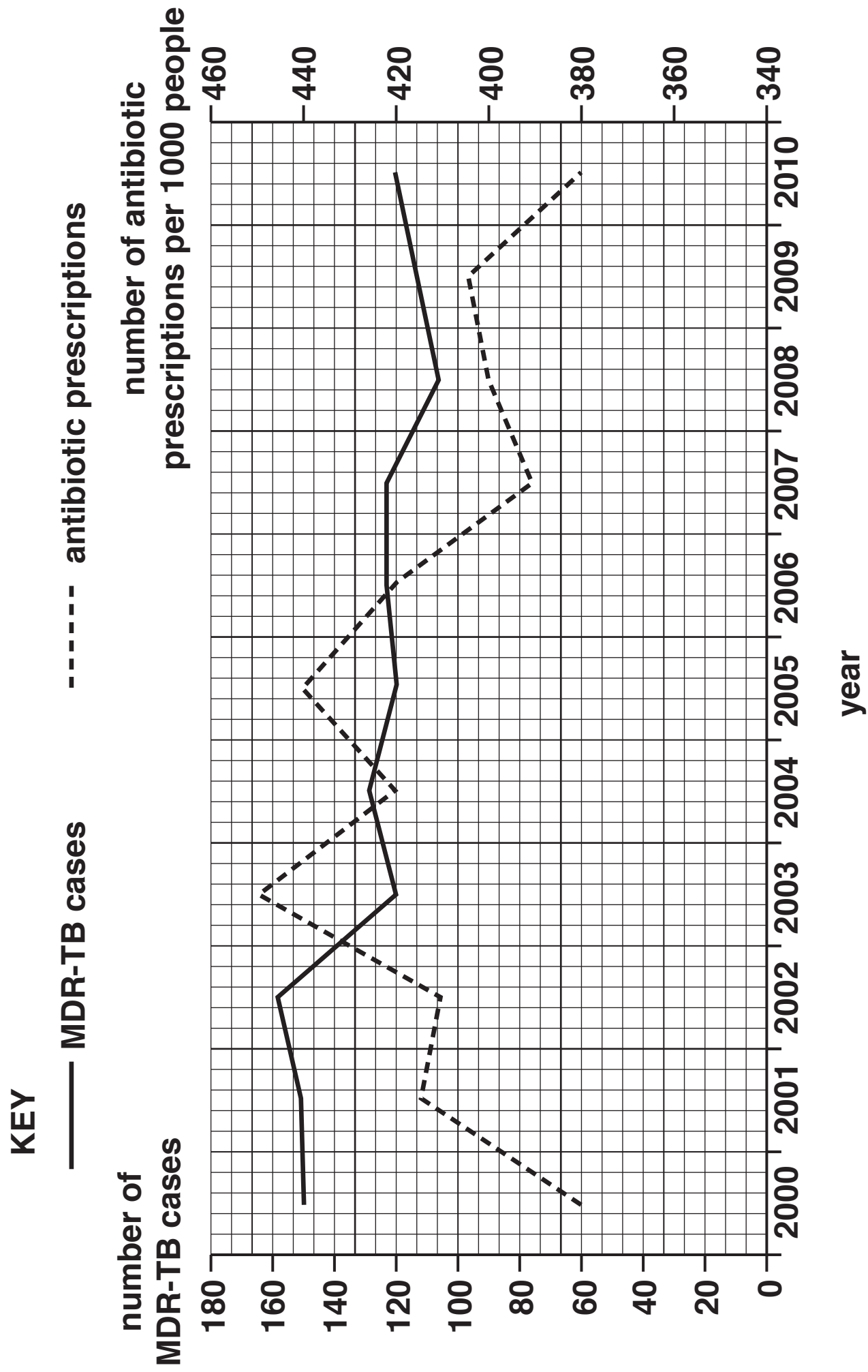
Fig. 4.2 opposite shows the number of cases of MDR-TB and the number of antibiotic prescriptions between 2000 and 2010.

- (i) Using Fig. 4.2, calculate the mean percentage decrease PER YEAR in the number of MDR-TB cases between 2000 and 2010.

Show your working.

Answer = _____ % [2]

Fig. 4.2



- (ii) Scientists have concluded that the increase in MDR-TB cases is due to the overuse of antibiotics.

Evaluate this conclusion using the data in Fig. 4.2.

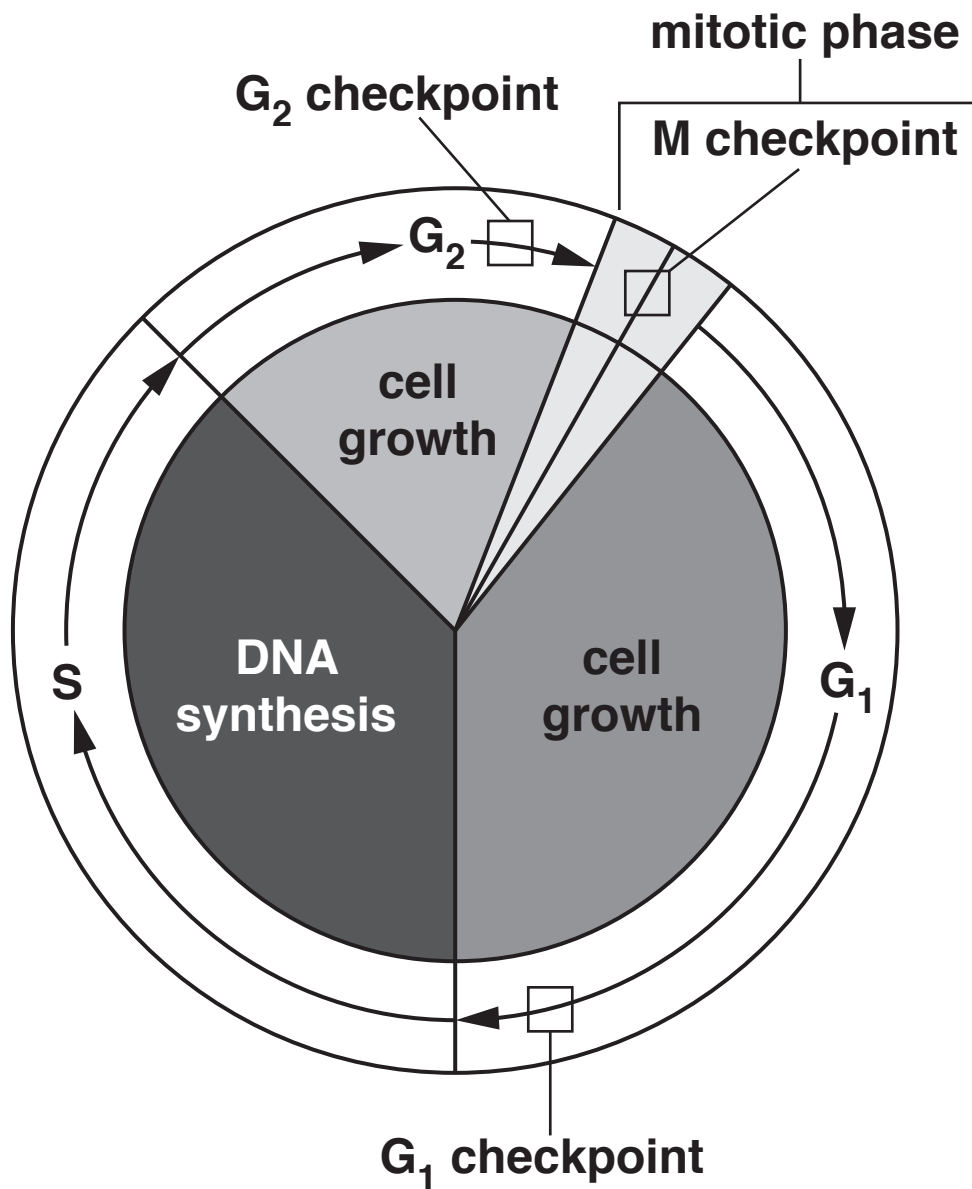
[3]

BLANK PAGE

5 (a) The cell cycle is a regulated process.

Fig. 5 shows three checkpoints in the cell cycle where mistakes may be corrected.

Fig. 5



Suggest how a faulty G_2 checkpoint may affect the cell cycle.

[2]

- (b) It is thought that the *BRCA1* gene codes for a protein that is responsible for regulating the G_2 checkpoint.**

Breast cancer may be caused by the inheritance of a faulty *BRCA1* gene.

What techniques can be used by radiographers in the detection of cancers such as breast cancer?

[3]

- 6 (a) A scientist wanted to observe the different stages of nuclear division.

Table 6 describes some events that occur during mitosis and meiosis in PLANT CELL samples.

Complete Table 6 by placing a tick (✓) if the event described does occur in the type of nuclear division or a cross (X) if the event does not occur.

The first row has been completed for you.

Table 6

EVENT	MITOSIS	MEIOSIS I	MEIOSIS II
Chromosomes condense in prophase	✓	✓	X
Nuclear envelope breaks down in prophase			
Bivalent pairs line up in metaphase			
Centromere splits during anaphase			
Centrioles move to opposite poles of the cell during prophase			

[4]

(b) Explain how meiosis is significant in the life cycle of a plant.

[2]

(c) (i) DNA barcoding is a method of classifying different plant species based on their genes. Some of the genes used in DNA barcoding are found inside the nucleus of the cell.

Where else in a plant cell can genes be found for DNA barcoding?

[1]

(ii) State ONE advantage and ONE disadvantage of using DNA barcoding to classify plant species.

Advantage _____

Disadvantage _____

[2]

END OF QUESTION PAPER

ADDITIONAL ANSWER SPACE

If additional space is required, you should use the following lined page(s). The question number(s) must be clearly shown in the margin(s).

BLANK PAGE

BLANK PAGE

Copyright Information

OCR is committed to seeking permission to reproduce all third-party content that it uses in its assessment materials. OCR has attempted to identify and contact all copyright holders whose work is used in this paper. To avoid the issue of disclosure of answer-related information to candidates, all copyright acknowledgements are reproduced in the OCR Copyright Acknowledgements Booklet. This is produced for each series of examinations and is freely available to download from our public website (www.ocr.org.uk) after the live examination series.

If OCR has unwittingly failed to correctly acknowledge or clear any third-party content in this assessment material, OCR will be happy to correct its mistake at the earliest possible opportunity.

For queries or further information please contact the Copyright Team, First Floor, 9 Hills Road, Cambridge CB2 1GE.

OCR is part of the Cambridge Assessment Group; Cambridge Assessment is the brand name of University of Cambridge Local Examinations Syndicate (UCLES), which is itself a department of the University of Cambridge.