



Rewarding Learning

ADVANCED SUBSIDIARY (AS)  
General Certificate of Education  
2015

Centre Number

--	--	--	--	--

Candidate Number

--	--	--	--	--

# Biology

Assessment Unit AS 1  
*assessing*  
Molecules and Cells



AB111

[AB111]

MONDAY 8 JUNE, AFTERNOON

### TIME

1 hour 30 minutes.

### INSTRUCTIONS TO CANDIDATES

Write your Centre Number and Candidate Number in the spaces provided at the top of this page.

Write your answers in the spaces provided in this question paper.

There is an extra lined page at the end of the paper if required.

Answer **all eight** questions.

You are provided with **Photograph 1.3** for use with Question 3 in this paper.

Do not write your answers on this photograph.

### INFORMATION FOR CANDIDATES

The total mark for this paper is 75.

Section A carries 60 marks. Section B carries 15 marks.

Figures in brackets printed down the right-hand side of pages indicate the marks awarded to each question or part question.

You are reminded of the need for good English and clear presentation in your answers.

Use accurate scientific terminology in all answers.

You should spend approximately **20 minutes** on Section B.

You are expected to answer Section B in continuous prose.

**Quality of written communication** will be assessed in Section B, and awarded a maximum of 2 marks.

For Examiner's use only	
Question Number	Marks
1	
2	
3	
4	
5	
6	
7	
8	

<b>Total Marks</b>	
--------------------	--

**BLANK PAGE**

## Section A

- 1 The descriptions in the following table relate to transport across a cell membrane.

Complete the table, identifying the mechanism of transport described.

Description	Mechanism of transport
Substances moved across a cell membrane against a concentration gradient	
Process by which substances taken into a cell cause the cell membrane to enclose the material in a vesicle	
Removal or secretion of substances from a cell by the fusion of a vesicle with the cell membrane	
Movement of substances across a cell membrane from higher to lower concentration, using protein carriers in the membrane	
Movement of substances across a cell membrane from higher to lower concentration, directly through the phospholipid layer	

[5]

Examiner Only	
Marks	Remark



3 **Photograph 1.3** is an electron micrograph of part of a plant cell.

Examiner Only

Marks Remark

(a) (i) State the **functions** of structures **A** and **B**.

**A** \_\_\_\_\_

**B** \_\_\_\_\_ [2]

(ii) Identify the structures labelled **C**, **D** and **E**.

**C** \_\_\_\_\_

**D** \_\_\_\_\_

**E** \_\_\_\_\_ [3]

(b) (i) Identify the structures labelled **F** and state their precise function in the cell.

Identification \_\_\_\_\_

Function \_\_\_\_\_

\_\_\_\_\_ [2]

(ii) Suggest why the two structures labelled **F** look different in this micrograph.

\_\_\_\_\_

\_\_\_\_\_ [1]

(c) Using the scale bar on **Photograph 1.3**, calculate the magnification of this electron micrograph. (Show your working.)

Answer \_\_\_\_\_ [3]





5 (a) Plant cells contain a variety of carbohydrate molecules, including starch and cellulose.

(i) Name the type of bond which is found between the monomers (subunits) in both starch and cellulose.

\_\_\_\_\_

[1]

(ii) Complete the table below to show the function of each of these molecules, and their location within a cell.

Carbohydrate	Function	Location in cell
Starch		
Cellulose		

[4]

(b) Sucrose is another carbohydrate found in plants and is abundant in nectar. Honeybees collect nectar and take it back to their hive, where they convert it into honey. This process involves the breakdown of some of the sucrose into its monomers.

(i) State precisely the carbohydrate group to which sucrose belongs.

\_\_\_\_\_

[1]

(ii) Name the type of reaction involved in the breakdown of sucrose into its monomers.

\_\_\_\_\_

[1]

(iii) Identify the products of this reaction.

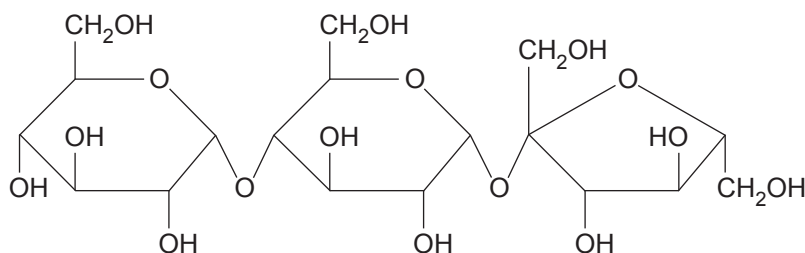
\_\_\_\_\_ and \_\_\_\_\_ [1]

Examiner Only	
Marks	Remark



- (c) In addition to sucrose, honey also contains other carbohydrates made by honeybees. These include maltose and erlose, a molecule first discovered in honey.

The structure of erlose is shown in the diagram below.



It is thought that the honeybees use sucrose to make erlose. Describe precisely how the structure of erlose differs from that of sucrose.

---

---

---

---

---

---

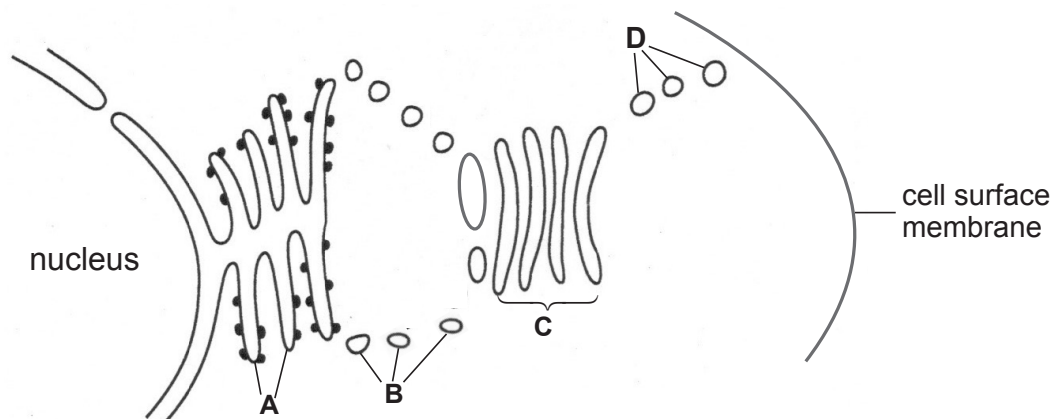
[2]

Examiner Only

Marks Remark

- 6 In plants, nitrates are absorbed from the soil and travel to the leaf in the xylem. In the leaf cells, they are used to make enzymes and other macromolecules that are needed by the leaf.

The diagram below shows some of the organelles in a leaf cell that have nitrogen-containing molecules within them.



- (a) Identify the organelles represented by the letters **A – C**.

**A** \_\_\_\_\_

**B** \_\_\_\_\_

**C** \_\_\_\_\_

[3]

Scientists used radioactive nitrogen ( $^{15}\text{N}$ ) to trace the pathway of nitrogen through the organelles in a leaf cell. They introduced nitrates containing radioactive nitrogen into the xylem. When this reached the leaf cells, the times at which radioactive nitrogen was detected in different locations were recorded.

Time after nitrates introduced to the xylem/min	Main location of radioactive nitrogen ( $^{15}\text{N}$ )
0	xylem
2	cytoplasm and nucleus
10	organelle <b>A</b>
15	organelle <b>B</b>
20	organelle <b>C</b>
25	organelle <b>D</b>
30	proteins in cell surface membrane

Examiner Only	
Marks	Remark



- 7 Starch is broken down by the enzyme amylase. A simple experiment involves mixing starch and amylase, after which samples are taken at intervals and tested with iodine. The time at which the iodine shows no colour change is taken as the end point of the reaction. However, this simple type of experiment gives no idea of the rate of the reaction over time.

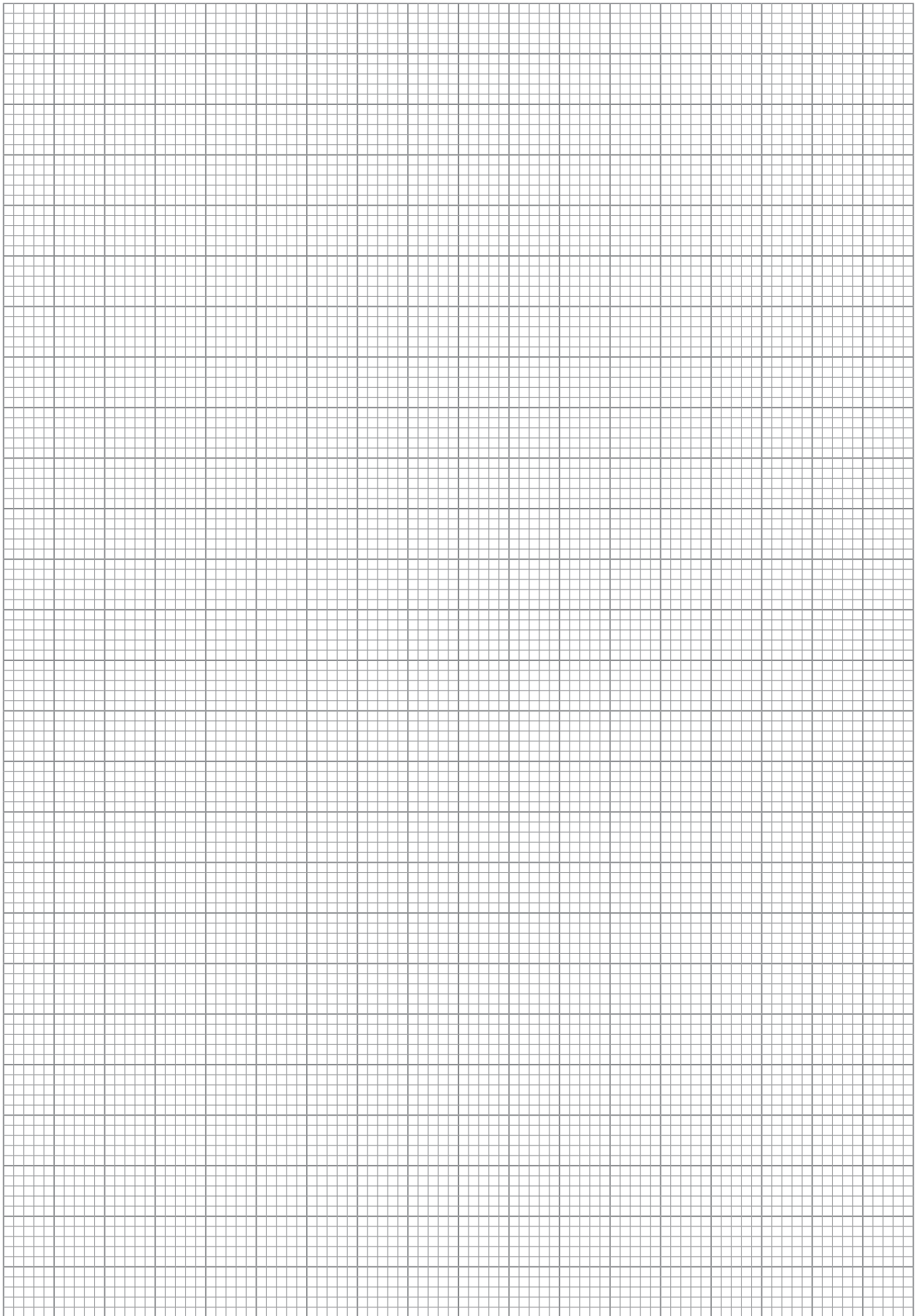
In an alternative experiment to more accurately track the progress of the reaction, a colorimeter can be used. Iodine is added to the starch and amylase. As the reaction progresses, the amount of light transmitted through the starch-amylase-iodine mixture changes, as shown in the table below.

Time after mixing starch and amylase/min	Light transmitted through sample/%
0	2
5	38
10	72
15	86
20	94
25	98

- (a) Plot the above data on the graph paper opposite, using the most appropriate graphical technique. Your graph should include a caption. [4]

Examiner Only

Marks Remark



(b) The solutions used in the colorimeter experiment are more dilute than those used in the simple end-point experiment described at the start of this question. Suggest and explain a reason for this.

---

---

---

---

---

---

[2]

(c) Explain precisely why a red filter should be used when measuring % transmission of light through a starch-amylase-iodine mixture.

---

---

[1]

(d) Apart from using the correct colour of filter, identify **one** other procedure which would lead to more accurate readings of % transmission of light.

---

---

[1]

(e) A calibration curve can be used with the results of the colorimeter experiment. This allows values for % transmission of light to be converted into starch concentrations.

Suggest the procedure which would be used to produce this calibration curve.

---

---

---

---

---

---

---

---

---

---

[3]

Examiner Only	
Marks	Remark

**Section B**

*Quality of written communication is awarded a maximum of 2 marks in this section.*

- 8** The process of meiosis results in haploid daughter cells which show genetic variation.

Give an account of the process of meiosis. Your account should include the stage at which the haploid number of chromosomes is formed and **two** ways in which the process results in genetic variation in daughter cells.

[13]

Quality of written communication

[2]

---

Give an account of the process of meiosis. Your account should include the stage at which the haploid number of chromosomes is formed and **two** ways in which the process results in genetic variation in daughter cells.

---

---

---

---

---

---

---

---

---

---

---

---

---

---

---

---

---

---

---

---

---

---

---

---

---

---

Examiner Only	
Marks	Remark









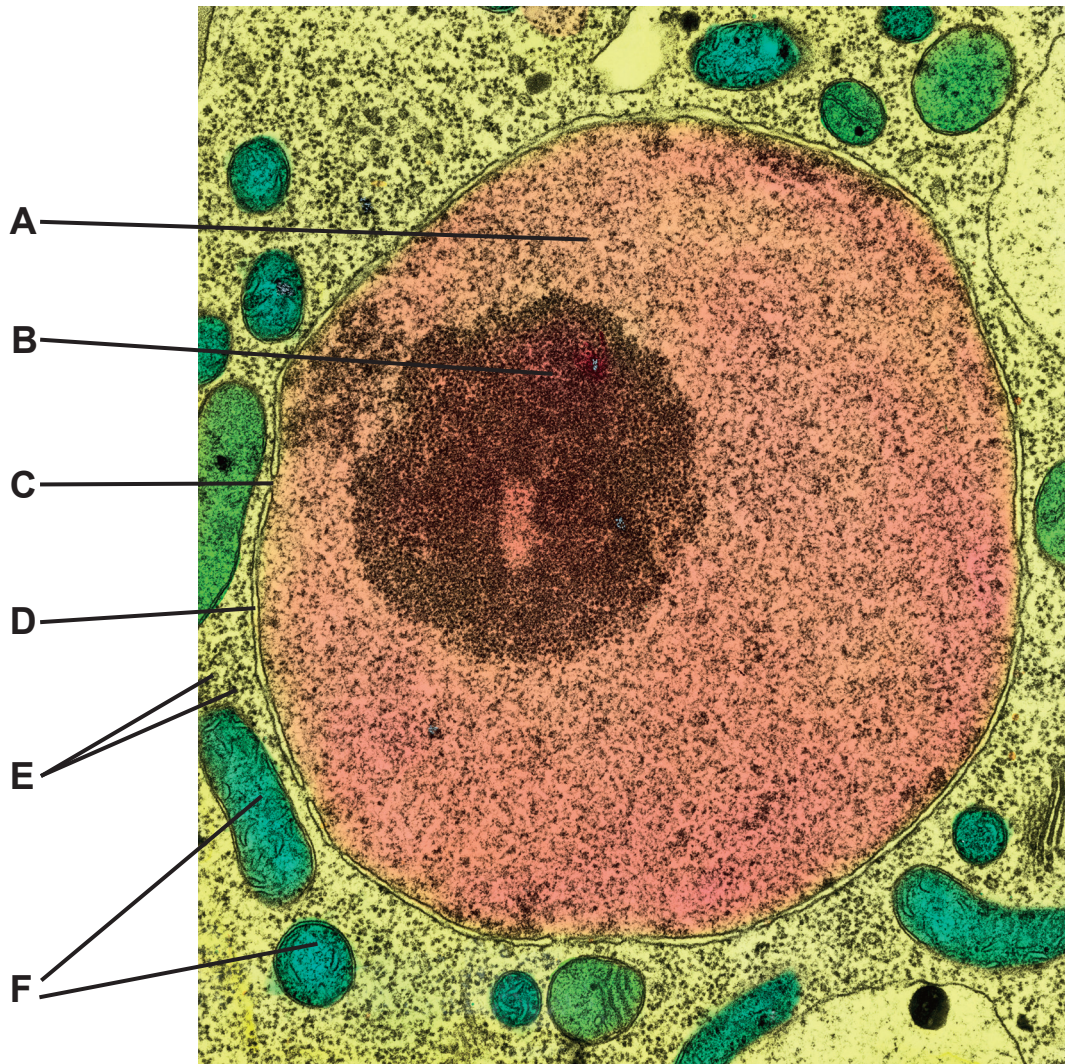
---

**THIS IS THE END OF THE QUESTION PAPER**

---

Permission to reproduce all copyright material has been applied for.  
In some cases, efforts to contact copyright holders may have been unsuccessful and CCEA  
will be happy to rectify any omissions of acknowledgement in future if notified.

Photograph 1.3  
(for use with Question 3)



© Biophoto Associates / Science Photo Library

Scale bar  
8  $\mu\text{m}$