

Surname _____

Other Names _____

Centre Number _____

Candidate Number _____

Candidate Signature _____

ASSESSMENT AND QUALIFICATIONS ALLIANCE

General Certificate of Education

Advanced Subsidiary Examination

June 2010

BIOLOGY

Unit 1 Biology and disease

BIOL1

Tuesday 25 May 2010 9.00 am

For this paper you must have:

- a ruler with millimetre measurements.
- a calculator.

TIME ALLOWED

- 1 hour 15 minutes plus your additional time allowance

At the top of the page, write your surname and other names, your centre number, your candidate number and add your signature.

[Turn over]

BLANK PAGE

INSTRUCTIONS

- **Use black ink or black ball-point pen.**
- **Answer ALL questions.**
- **You must answer the questions in the spaces provided.**
- **Do all rough work in this book. Cross through any work you do not want to be marked.**

INFORMATION

- **The marks for questions are shown in brackets.**
- **The maximum mark for this paper is 60.**
- **You will be marked on your ability to:**
 - **use good English**
 - **organise information clearly**
 - **use scientific terminology accurately.**

DO NOT TURN OVER UNTIL TOLD TO DO SO

Answer ALL questions in the spaces provided.

1 (a) Cholera bacteria are prokaryotic cells. Give THREE structures found in prokaryotic cells but not in eukaryotic cells. [3 marks]

1 _____

2 _____

3 _____

1 (b) Cholera bacteria cause an increase in the secretion of chloride ions into the small intestine. Use your knowledge of water potential to explain how the increased secretion of chloride ions causes diarrhoea. [2 marks]

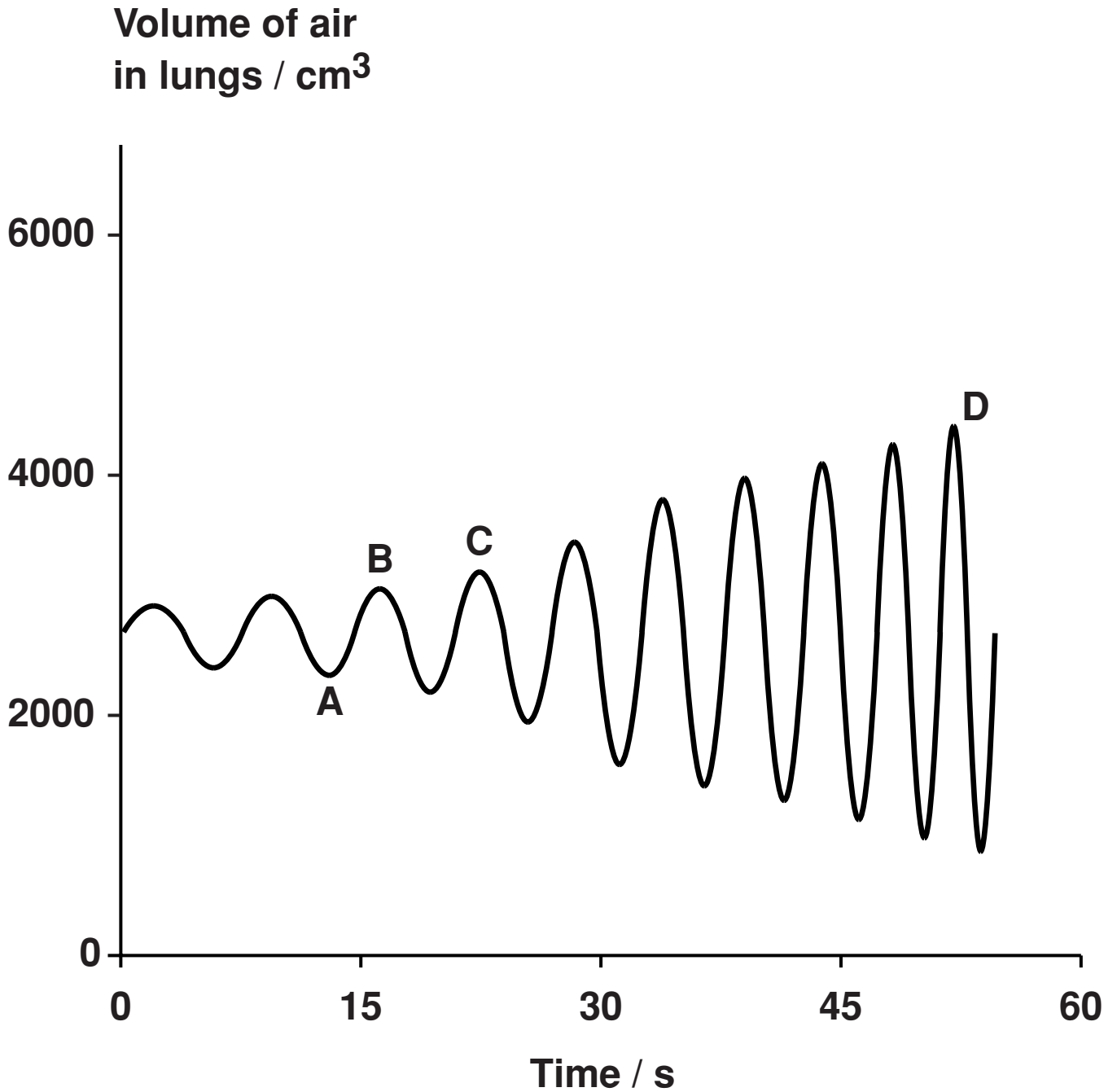
1 (c) People with diarrhoea suffer fluid loss. They can use oral rehydration solutions (ORS) to replace the lost fluid. The mixture used to make an oral rehydration solution is stored as a powder. The powder can be made into a solution with boiled water.

1 (c) (i) Why must boiled water be used to make an ORS? [1 mark]

1 (c) (ii) The mixture used to make the ORS contains glucose. Give ONE other substance that must be present in the mixture. [1 mark]

[Turn over]

- 2 The graph shows changes in the volume of air in a person's lungs during breathing.



2 (a) The person was breathing in between times A and B on the graph.

2 (a) (i) Explain how the graph shows that the person was breathing in between times A and B. [1 mark]

2 (a) (ii) Describe and explain what happens to the shape of the diaphragm between times A and B. [2 marks]

[Question 2 continues on the next page]

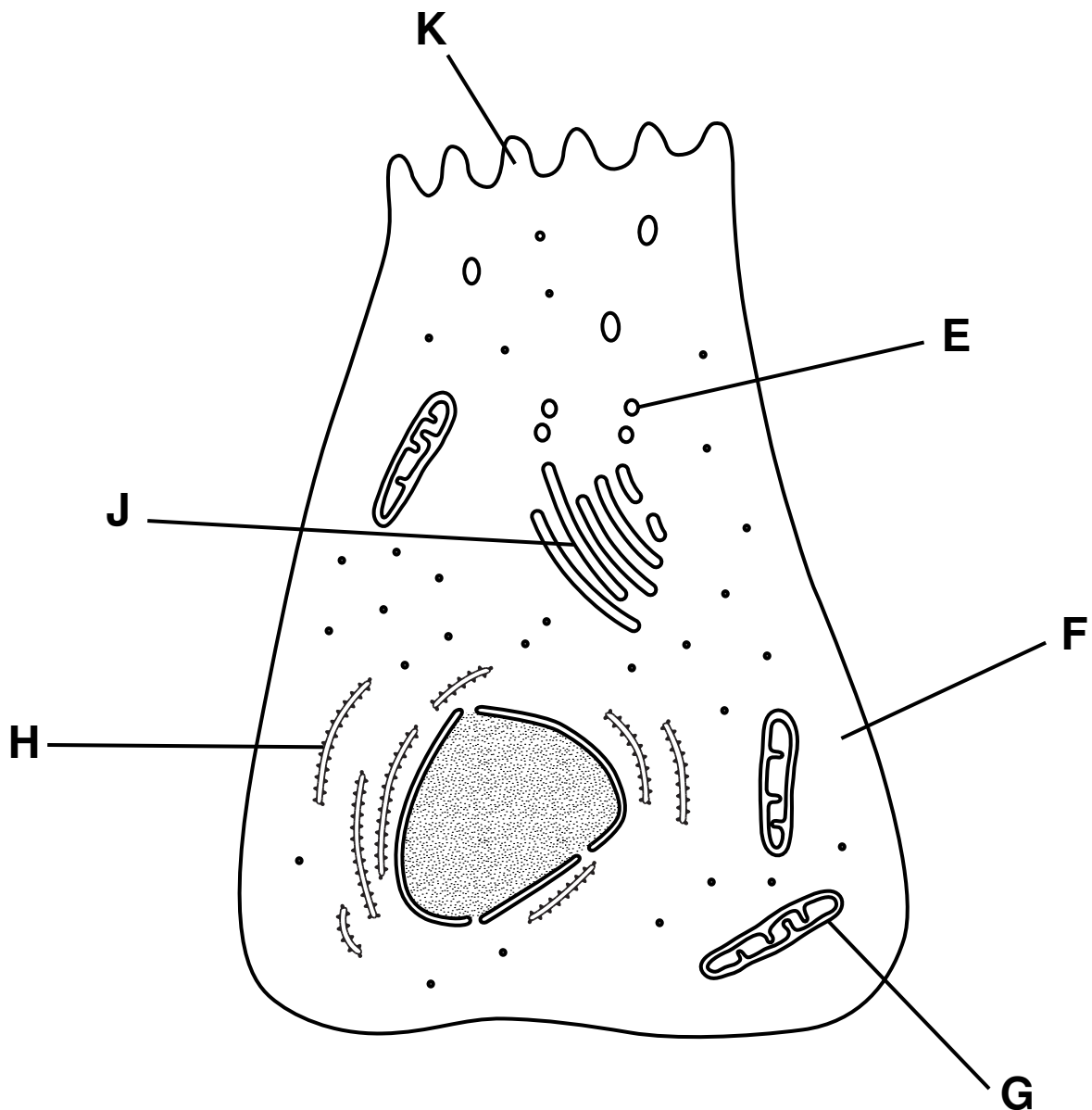
2 (b) The person's pulmonary ventilation changed between times C and D. Describe how the graph shows that the pulmonary ventilation changed. [3 marks]

BLANK PAGE

TURN OVER FOR THE NEXT QUESTION

- 3 (a) Name the type of bond that joins amino acids together in a polypeptide. [1 mark]
-

The diagram shows a cell from the pancreas.



- 3 (b)** The cytoplasm at **F** contains amino acids. These amino acids are used to make proteins which are secreted from the cell.

Place the appropriate letters in the correct order to show the passage of an amino acid from the cytoplasm at **F** until it is secreted from the cell as a protein at **K**. [2 marks]

F				K
----------	--	--	--	----------

[Question 3 continues on the next page]

**3 (c) There are lots of organelle G in this cell.
Explain why. [2 marks]**

3 (d) A group of scientists homogenised pancreatic tissue before carrying out cell fractionation to isolate organelle G.

Explain why the scientists

3 (d)(i) homogenised the tissue [1 mark]

3 (d)(ii) filtered the resulting suspension [1 mark]

3 (d)(iii) kept the suspension ice cold during the process [1 mark]

3 (d)(iv) used isotonic solution during the process. [2 marks]

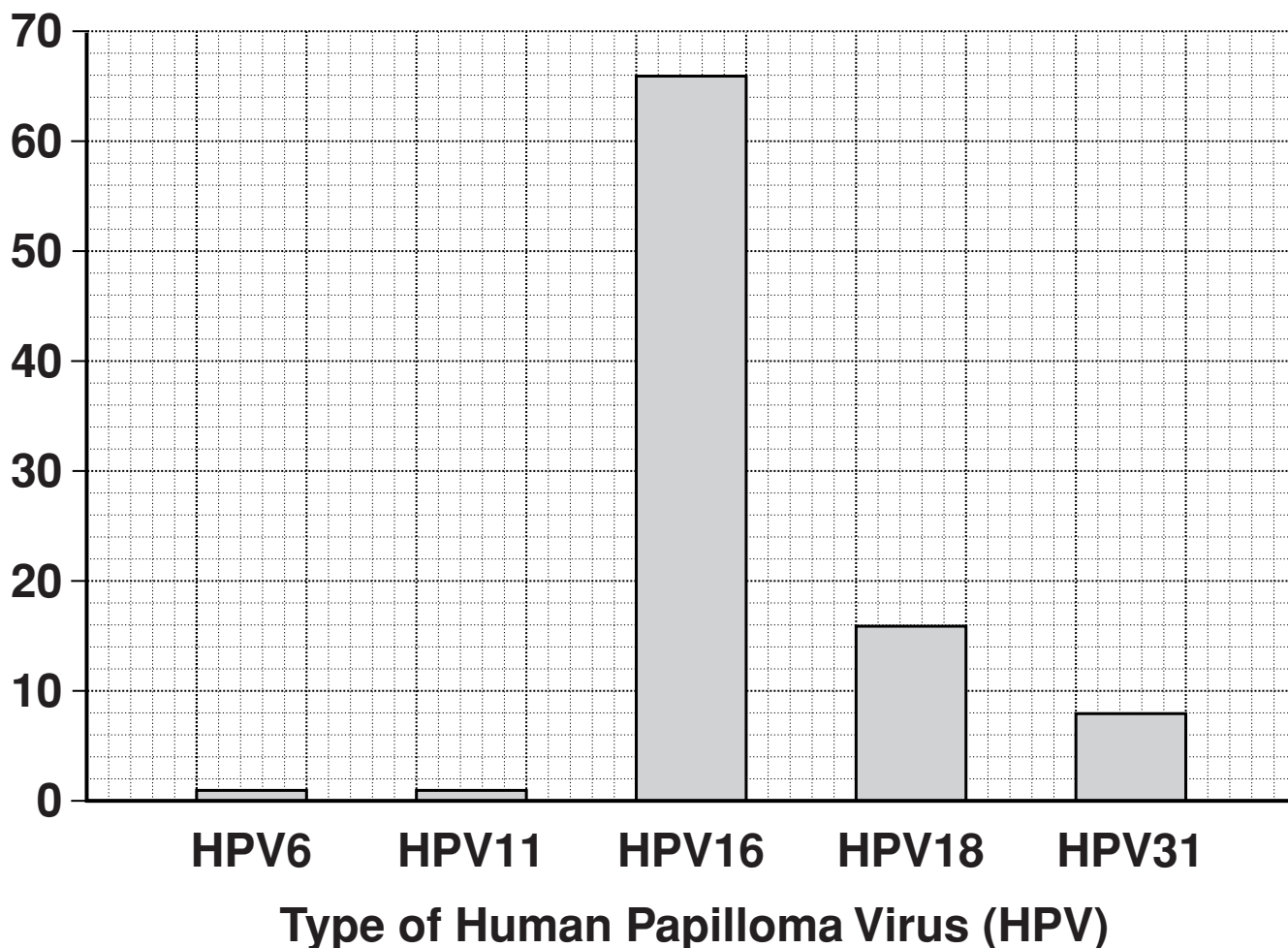
[Turn over]

4 Cervical cancer occurs in the neck of the uterus.

Scientists investigated the link between cervical cancer and infection with some types of Human Papilloma Virus (HPV).

The graph shows the frequency of five different types of HPV in women who had cervical cancer.

Percentage of women with this type of HPV



4 (a) A local newspaper published an article about cervical cancer with the headline ‘HPV causes cervical cancer’.

Do the data shown in the graph support this claim? Explain your answer. [3 marks]

[Question 4 continues on the next page]

4 (b) Scientists have developed vaccines against HPV. One of the vaccines contains HPV antigens.

4 (b)(i) What is an HPV antigen? [2 marks]

4 (b)(ii) A vaccine can be used to produce immunity to HPV. Describe how memory cells are important in this process. [3 marks]

4 (c) Some doctors suggested offering the vaccine to young men. Explain the advantage of vaccinating young men as well as young women. [2 marks]

[Turn over]

<hr/>
10

5 **Gangliosides are lipids found in the cell surface membranes of nerve cells. Hexosaminidase is an enzyme present in blood that breaks down gangliosides. If gangliosides are not broken down, they damage nerve cells.**

5 (a) **Hexosaminidase only breaks down gangliosides. It does not break down other lipids. Explain why this enzyme only breaks down gangliosides. [3 marks]**

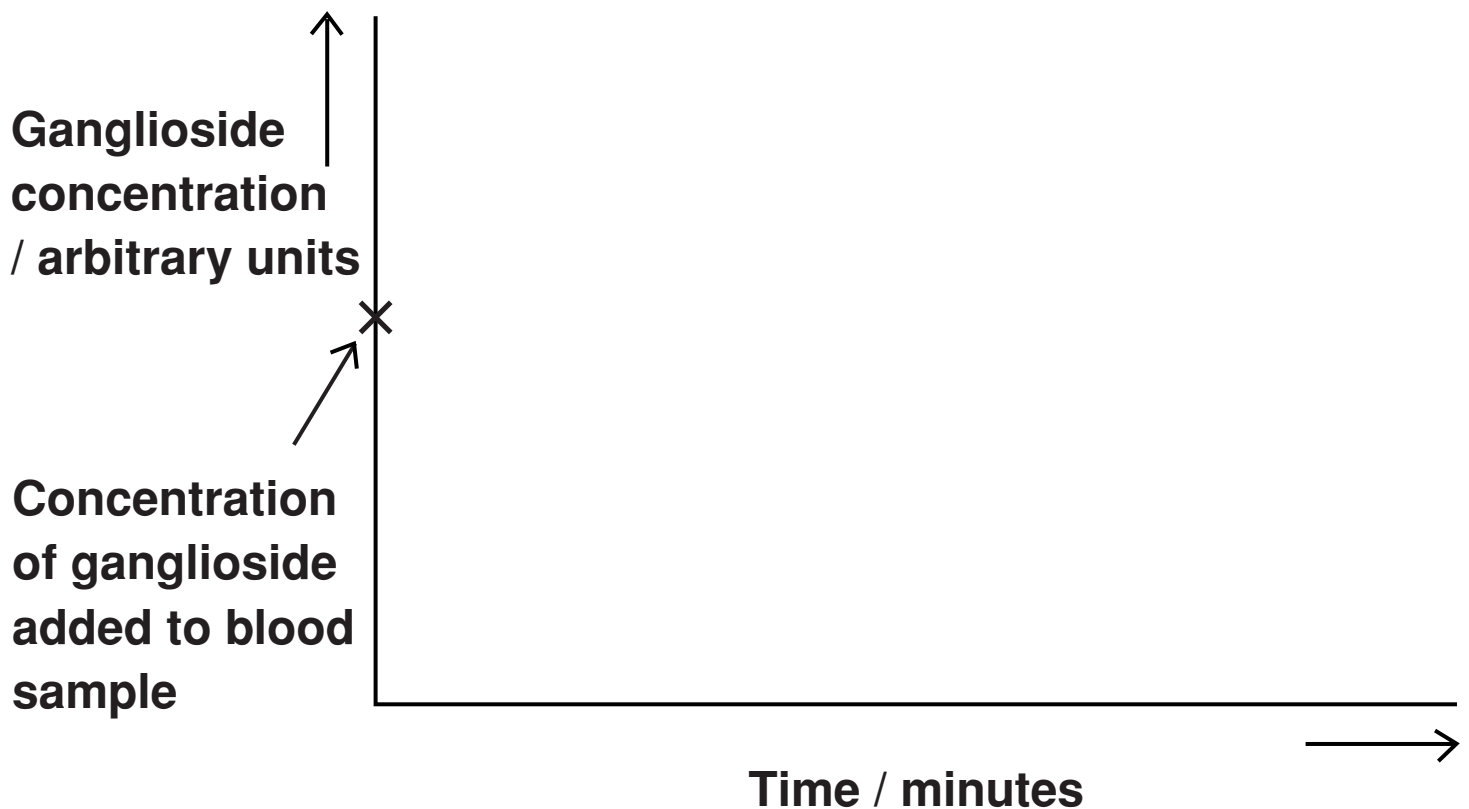
BLANK PAGE

QUESTION 5 CONTINUES ON THE NEXT PAGE

5 (b) Hexosaminidase is found in the blood of healthy people. People with Tay Sachs disease do not have this enzyme in their blood.

Doctors confirm Tay Sachs disease by using a blood test. The technician carrying out the test adds a solution containing a high concentration of gangliosides to a sample of blood from the person being tested. The technician then measures the concentration of gangliosides in the person's blood at regular intervals.

- 5 (b)(i) Complete the graph below by sketching a curve to show the results you would expect for a person with Tay Sachs disease. Label this curve T. [1 mark]



- 5 (b)(ii) Sketch a curve on the same graph to show the results you would expect for a healthy person who does NOT have Tay Sachs disease. Label this curve H. [1 mark]

[Question 5 continues on the next page]

- 5 (c) Scientists are trying to find a way to give the missing enzyme to people with Tay Sachs disease. Suggest why they cannot give the enzyme as a tablet that is swallowed.
[2 marks]

7

BLANK PAGE

TURN OVER FOR THE NEXT QUESTION

6 Read the following passage.

Some foods contain substances called flavenoids. Flavenoids lower blood cholesterol concentration and reduce the risk of developing coronary heart disease.

Some types of dark chocolate have a high concentration of flavenoids. One group of scientists investigated the effect of eating dark chocolate on the risk of developing coronary heart disease. 5

The scientists randomly divided healthy volunteers into two groups. Every day one group was given dark chocolate containing flavenoids to eat. The other group acted as a control. 10

The scientists measured the diameter of the lumen of the main artery in the arms of the volunteers every week. At the end of a month, the diameter of the lumen of the main artery in the arm of the volunteers who had eaten dark chocolate containing flavenoids had increased. 15

Use information from the passage and your own knowledge to answer the questions.

6 (a) High blood cholesterol concentration is a risk factor associated with coronary heart disease.

Give TWO other risk factors associated with coronary heart disease. [2 marks]

1 _____

2 _____

6 (b)(i) The scientists used healthy volunteers in this investigation (lines 10–11). Why was it important that the volunteers were healthy? [1 mark]

6 (b)(ii) The scientists randomly divided the volunteers into two groups (lines 10–11). Explain why they divided them randomly. [1 mark]

[Question 6 continues on the next page]

6 (c) (i) Describe how the control group should have been treated. [2 marks]

6 (c) (ii) Why was it important to have a control group in this investigation? [1 mark]

6 (d) Suggest why an increase in the diameter of the lumen of the main artery in the arm (lines 16–19) is associated with a reduced risk of coronary heart disease. [3 marks]

[Turn over]

10

[Question 7 continues on the next page]

END OF QUESTIONS

<hr/>
10

THERE ARE NO QUESTIONS PRINTED ON THIS PAGE

For Examiner's Use	
Examiner's Initials	
Question	Mark
1	
2	
3	
4	
5	
6	
7	
TOTAL	

Copyright © 2010 AQA and its licensors. All rights reserved.

WMP/Jun10/BIOL1