



GCE MARKING SCHEME

SUMMER 2012

**APPLIED ICT
AS/Advanced**

INTRODUCTION

The marking schemes which follow were those used by WJEC for the Summer 2012 examination in GCE APPLIED ICT. They were finalised after detailed discussion at examiners' conferences by all the examiners involved in the assessment. The conferences were held shortly after the papers were taken so that reference could be made to the full range of candidates' responses, with photocopied scripts forming the basis of discussion. The aim of the conferences was to ensure that the marking schemes were interpreted and applied in the same way by all examiners.

It is hoped that this information will be of assistance to centres but it is recognised at the same time that, without the benefit of participation in the examiners' conferences, teachers may have different views on certain matters of detail or interpretation.

WJEC regrets that it cannot enter into any discussion or correspondence about these marking schemes.

AICT 1

PART A

- ① *Name the type of organisation that currently best describes Golden Days* 1

Manufacturer/manufacturing

To be successful a business must have good communications. Identify two methods of internal communication that Golden Days could use. 2 x [1]

Examples:

Memo
Telephone
Intranet
Email
Reports
Meetings

[Question total 3]

-
- ② *Name one secondary source they could use and describe the information they could obtain from the source.* [1 + 1]

Source + explanation

Examples:

Competitor's websites + explanation – see prices charged for similar products

Competitor's company reports + explanation – published annual accounts – Companies House.

[Question total 2]

-
- ③ *Describe two features of an email package that the marketing department would find useful* 2 x [1 + 1]

Named feature + example related to the context

Examples:

Ability to send one email to many recipients

Ability to attach documents to the email

Ability to store emails in folders as organised (permanent) record

Ability to create and use an address book

[Question total 4]

④

Describe the main functions of an MIS

2 x[1 + 1]

Advantage + expansion x 2

Examples:

Identifies trends

Draws on a large amount of stored data

Collates large amount of data to provide information

Presents data in a useful (graphical) format

Supports the decision making process with large amounts of information

Allows 'What If' scenarios to be worked through

[Question total 4]

⑤

Label the diagram to illustrate the information flows in the process.

[5]

See diagram

All flows/entities correct - 5 marks

8 or 9 flows/entities correct – 4 marks

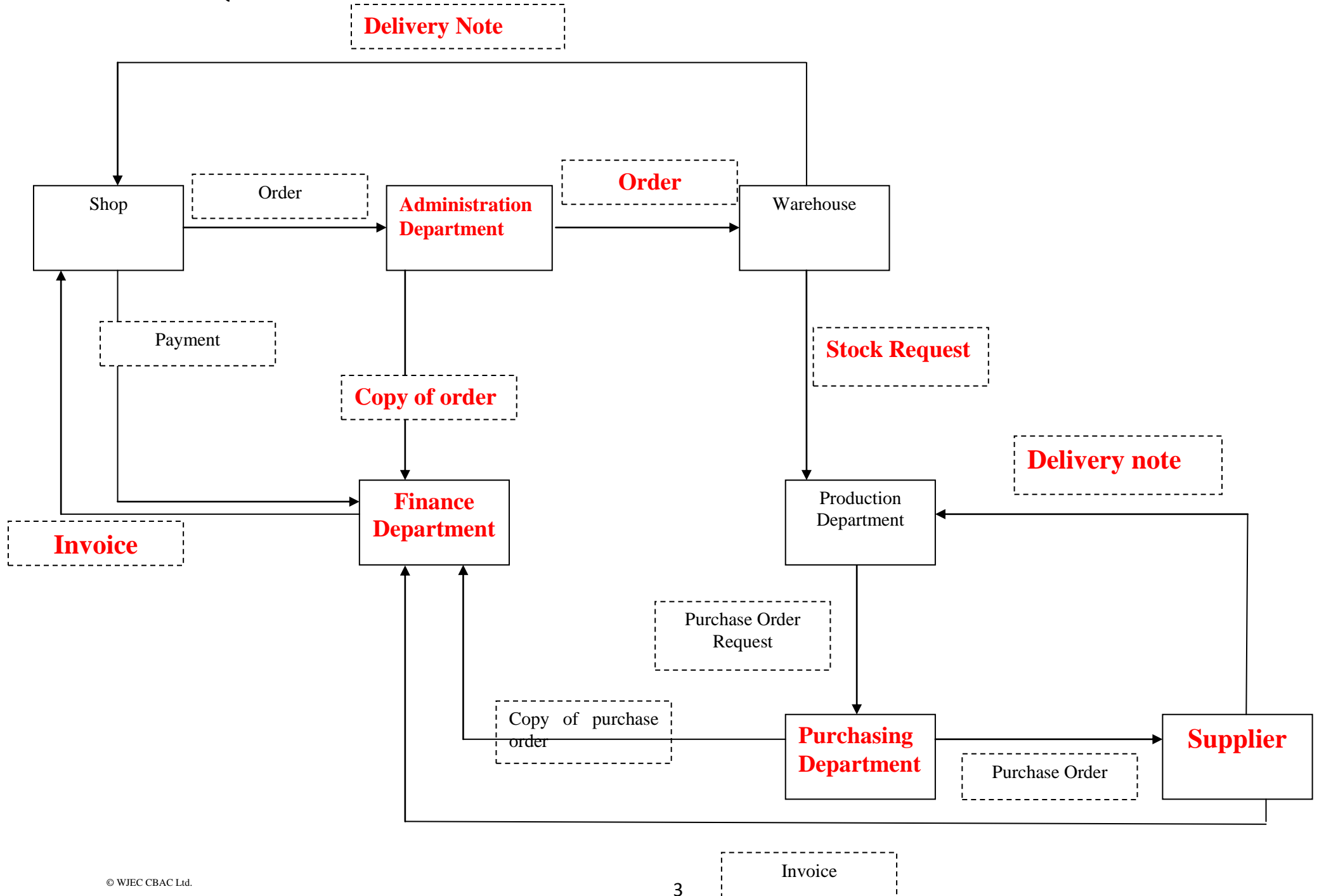
6 or 7 flows/entities correct – 3 marks

4 or 5 flows/entities correct – 2 marks

3 flows/entities correct – 1 mark

[Question total 5]

FLOW DIAGRAM FOR QUESTION 5



⑥ Describe how a computerised stock control system would help Golden Days to improve their stock control process.. [4]

One mark per relevant stage

- Stock entering the warehouse is recorded on the system
- Each time an item leaves the warehouse it is deducted from the total for that item
- When remaining stock level reaches a set (re-order) level ...
- The system automatically alerts the production department to produce/supply more stock
- Ensures minimum stock levels are maintained

[Question total 4]

⑦ Describe two features of database software that would ensure that the correct customer details can be retrieved when required. 2 x [1 + 1]

Feature + expansion

Examples:

Validation – rules used to ensure that data conforms to particular format/is in a particular range/is from a restricted list.

Data entry form – automated facilities (drop down boxes/radio buttons/instructions)

Use of relationships to avoid duplication and minimise errors.

Automated double entry

[Question total 4]

⑧ State three principles of the DPA. [3]

1. *It must be collected and used fairly and inside the law.*
2. *It must only be held and used for the reasons given to the Information Commissioner.*
3. *It can only be used for those registered purposes*
4. The information held must be adequate, relevant and not excessive
5. It must be accurate and be kept up to date.
6. It must not be kept longer than is necessary for the registered purpose.
7. The information must be kept safe and secure.
8. *The files may not be transferred outside of the European Economic Area (that's the EU plus some small European countries) unless the country that the data is being sent to has a suitable data protection law.*

Accept principles in italics if well explained and related to the database.

[Question total 3]

⑨ Describe two ways in which ICT can be used to raise sales of the toys 2 x [1+1]

Method + expansion

Examples:

Targeted mail shots to existing customers (email)

Mail merge special offers to existing customers

Website to advertise and attract new customers

Ecommerce to sell toys over the Internet

Use of cookies to tailor web pages

[Question total 4]

⑩ Describe the features and facilities of project management software that will help Golden Days to introduce the rocking horses to the market.

Feature/facility + expansion

Examples:

Set milestones and deadlines

Identifies critical path

Management of resources/people

Recalculate timescales if ahead of time/delayed

Show clear representation of project/process

Ability to show plan in different formats

Ability to compare plans

Candidates give a clear, coherent answer fully and accurately describing and explaining all relevant sections. [5 – 7]

Candidates describe features/facilities of PMS software and can suggest a limited range of uses for the features/facilities, but responses lack clarity. [3 – 4]

Candidates simply list a range of points or give a brief explanation of features or facilities. The response lacks clarity and there are significant errors in spelling, punctuation and grammar. [1 – 2]

No appropriate response [0]

[Question total 4]

PART B

Task 1: Marketing	
Description: Part a (11 Marks)	Mark
Create new worksheet - Sales 1 mark but only if renamed Sales	1 mark
Import the data	1 mark
Function in A2 =SUM(Sales!(B1:N1)) 1 mark function, no marks for fill down	1 mark
Function C2 =VLOOKUP(A2, 'Commission Table'!\$E\$6:\$F\$8,2) 1 mark -function 1 mark - absolutes	2 marks
Formula in D2 =A2*C2 1 mark - formula, 1 mark - currency	2 marks
Function in E2 =IF(D2>0, "Pleased" , "Sorry") IF with error – 1 mark.	2 marks
Chart Suitable chart - 1 mark Title/Axis Labels - 1 mark If data has been moved – No Marks	2 marks
Task 1 a - Total 11 marks	11 marks

Task 1 Marketing – Part b (6 Marks)	
Description	Mark
Open the commission letter	
Insert chart under second paragraph	1 mark
Centre chart	1 mark
Mail merge - total sales, commission and message in addition to name and address 1 mark - mail merge 1 mark - layout 2 marks - data	4 marks
Task 1 b - Total	6 marks

Task 2 Administration – Part c (6 Marks)	
Description	Mark
Create agenda and import <i>agenda file</i> 1 mark - create 2 marks- layout	3 marks
Logical order 2 marks	2 marks
Numbered using software	1 mark
Task 2 - Total	6 marks

Task 3: Finance	
Description: Part a (11 Marks)	Mark
Create a database to store the given data Using sensible file name only (not db1)	1 mark
Import the data	1 mark
Use 2 tables	1 mark
One-to-many relationship On account number	1 mark
Integrity enforced (follow through)	1 mark
Clients table (9 records) Append/Make table query – 2 marks OR Table created by deletion – 1 mark	2 marks
Set Yes/No - 1 mark	1 mark
Validation Lookup, Range, Input Mask	3 marks
Task 3 a – Total 11 marks	11 marks

Task 3: Finance – Part b (4 Marks)	
Description	Mark
Create form - Clients	No mark
.. with sub form (1 mark) - toys Correct sub form (2 marks)	2 mark
Insert suitable title	1 mark
Insert logo	1 mark
Task 1 b– Total 4 Marks	4 marks

Task 3: Finance - Part c (16 Marks)	
Description	Marks
Create query all toys ready to be despatched 1 mark – both tables 1 – mark criterion (Yes)	2 marks
Amount outstanding 1 mark field name 1 mark calculation (Price - Deposit)	2 marks
Name and Address + Logo Golden Days, Heathwood, Bristol, BS7 5RR	1 mark
“Invoice” and 25/05/2012 on every page	1 mark
Correct page break	2 marks
Client’s details, plan number, price, deposit and amount outstanding 1 mark - data, 1 mark - layout	2 marks
Total amount of Invoice	1 mark
Total amount outstanding 1 mark - total, 1 mark formatted to currency	2 marks
Words - 1 mark Calculated date - 2 marks	3 marks
Task 3 c – Total 16 Marks	16 marks

Task 3 – Finance – Part d (6 Marks)	
Description	Mark
Two features	1 mark
Use of features	2 marks
Two features	1 mark
Use of features	1 marks
Task 1 d- Total	6 marks

AICT7

eConnect

Networking Principles, Design and Management

START – THE TENDER

1. **[6 marks]**

(a) *Describe the difference between an intranet and the Internet giving one example of information that would be found on Beacon Autocentre’s intranet and one example of information that would be found on Beacon Autocentre’s web site.* *[4]*

The Internet is many computers linked worldwide which allow communicating and transferring of data available to everyone 1

An intranet is a communication system providing similar services to the Internet solely within an organisation (logical not physical) and it can only be accessed by authorised people within the organisation such as employees. 1

Information on the Internet is for general public / customers. Any reasonable example of information such as directions, opening times, prices, etc... 1

Information on an intranet is for authorised users only. Any reasonable example of information such as internal job adverts, internal telephone directory, forms and documents for administration, etc... 1

(b) *Explain the term extranet giving one example of information that could be accessed using an extranet.* *[2]*

An extranet is a communication system providing similar services to an intranet but it can only be accessed by authorised people outside the organisation such as regular customers or suppliers. 1

Information on the extranet is for a restricted audience. Any reasonable example of information such as a customer’s past orders or order history, special prices for regular customers, employees accessing work schedules etc... 1

2. **[5 marks]**

(a) *Briefly describe two characteristics of a VLAN compared to a LAN.*
A Virtual Local Area Network (VLAN) offers higher performance for large Local Area Networks (LAN) because it limits broadcasts. 1
A Virtual Local Area Network (VLAN) provides better security for users on the VLAN 1
A VLAN does not require a physical local infrastructure 1
Maximum two marks

(b) *Briefly describe the characteristics of a Virtual Private Network (VPN) and explain the process carried out to ensure all communication is kept secure.*

A Virtual Private Network (VPN) can use a public network to allow a remote computer to securely communicate with a LAN.

1

The process carried out to ensure all communication is kept secure – Any two of 2x1

- Data is encrypted by sending computer (LAN) and decrypted by receiving LAN using same key (1)
- To access a VPN a user may require two factor authentication (or special frequently updated device) key in addition to username and password (1)
- Data is sent via a virtual tunnel which is set up before communication begins and closed at end of communication (1)

3. **[4 marks]**
(a) *Explain how a distributed network achieves efficient use of system resources.*

In distributed networks the operating system arranges (1) what resources each user requires for example sharing processor or storage (1) – good example will gain mark - data shared between more than one processor and results are returned or data is split up and stored on different hard drives. 2

(b) *A third party provider will store all of a company's data and applications, this is known as 'cloud-based computing'. Identify two benefits of cloud-based computing for a company.*

Any two of: 2

- Less hardware required such as file servers
- Back up and security is provided by third party
- Data and applications can be accessed anywhere in world so allows for scalability

4. **[5 marks]**
(a) *Describe how information is organised on the World Wide Web and how the information can be retrieved and viewed.*

Information is organised on the web as a collection of multimedia web pages 1
They can be retrieved and viewed using web browser software 1

(b) *Using an example explain the role of a URL and describe the different parts that form a URL.*

Any suitable example that includes protocol and domain name
<http://www.example.co.uk> 1

The role of a URL is to specify where web pages (data/files) are located on the World Wide Web. 1

A URL consists on a protocol and a domain name 1

5. [4 marks]
(a) *Describe, using an example, how a business could make use of a blog.* 2

A company can use a Blog to post regular entries on a topic (1) for example a company could use a blog to keep investors up to date with news affecting the company performance and share price (1) or a technology company updating customers on latest product releases and updates (problems/faults)

Any suitable example of how a company could make use of a blog. Information provided by the company.

- (b) *Describe, using an example, how a business could make use of an internet forum.* 2

A company can use an Internet forum where the company and customers can post messages (1) about a single topic or thread. For example a company could use an internet forum to allow a discussion on a new product and gain valuable feedback from customers or a technology company could provide help and support for a product via the forum.

Any suitable example of how a company could make use of an internet forum. Two way communication.

6.

[6 marks]

Describe, with an example, a suitable use for each of the following protocols.

One mark for example

One mark for suitable use

HTTPS (Hypertext Transfer Protocol)

Used when identifying, requesting and **securely** transferring multimedia Web pages over the Internet.

Example - browsing/searching the web but with some encryption so could be used for on-line banking

FTP (File Transfer Protocol)

Used when copying a file from one location to another via the Internet.

Example – downloading a program from a website

VoIP (Voice over Internet)

Used when routing voice conversations over the Internet or through any other IP-based network.

Example – making phone calls using the internet like Skype

7.

Describe how communication takes place between two work stations, station A and station B, on a bus and on a star network. Recommend which topology, star or bus, should be installed and justify your choice. [10]

How communication takes place between two work stations, station A and station B, on a bus network:

- Station A and B are listening to network
- When there is no traffic station A transmits message on bus with station B's address
- All stations are listening but only station B retrieves the message
- If more than one station starts transmitting at the same time a collision occurs
- All stations stop transmitting and wait a random amount of time before they start to transmit again

How communication takes place between two work stations, station A and station B, on a star network:

- Station transmits a message with station B's address
- Switch looks at message address and checks look up table for correct station
- Switch directs message to correct station (sub-network)

Justification of bus network

- Bus network has less cabling so cabling costs could be cheaper
- No need to purchase a switch so could save money
- No need to configure (set up) a switch

Justification of star network

- Better security because a bus is a broadcast network and all stations have access to all communication
- Easier to extend a star network – just plug into switch but with bus have to cut into backbone to add a new workstation and/or extend the backbone
- Better performance - as number of workstations increases the likelihood of collisions increases on a bus network and response time would deteriorate – insignificant on a star network

NOTE each point could be worth two marks .

8 – 10 marks	Candidates give a clear, coherent answer describing how both a station on a bus and a star network communicates and justify recommended network. They use appropriate terminology and accurate spelling, punctuation and grammar.
4 – 7 marks	Candidates give a clear answer describing how either a station on a bus or a star network communicates and justify recommended network. There are few errors in spelling, punctuation and grammar.
1 – 3 marks	Candidates briefly describe how a station on a bus or a star network communicate or simply list advantages of a network. The response lacks clarity and there are significant errors in spelling, punctuation and grammar.
0 marks	No appropriate response

Task 1

[10 Marks]

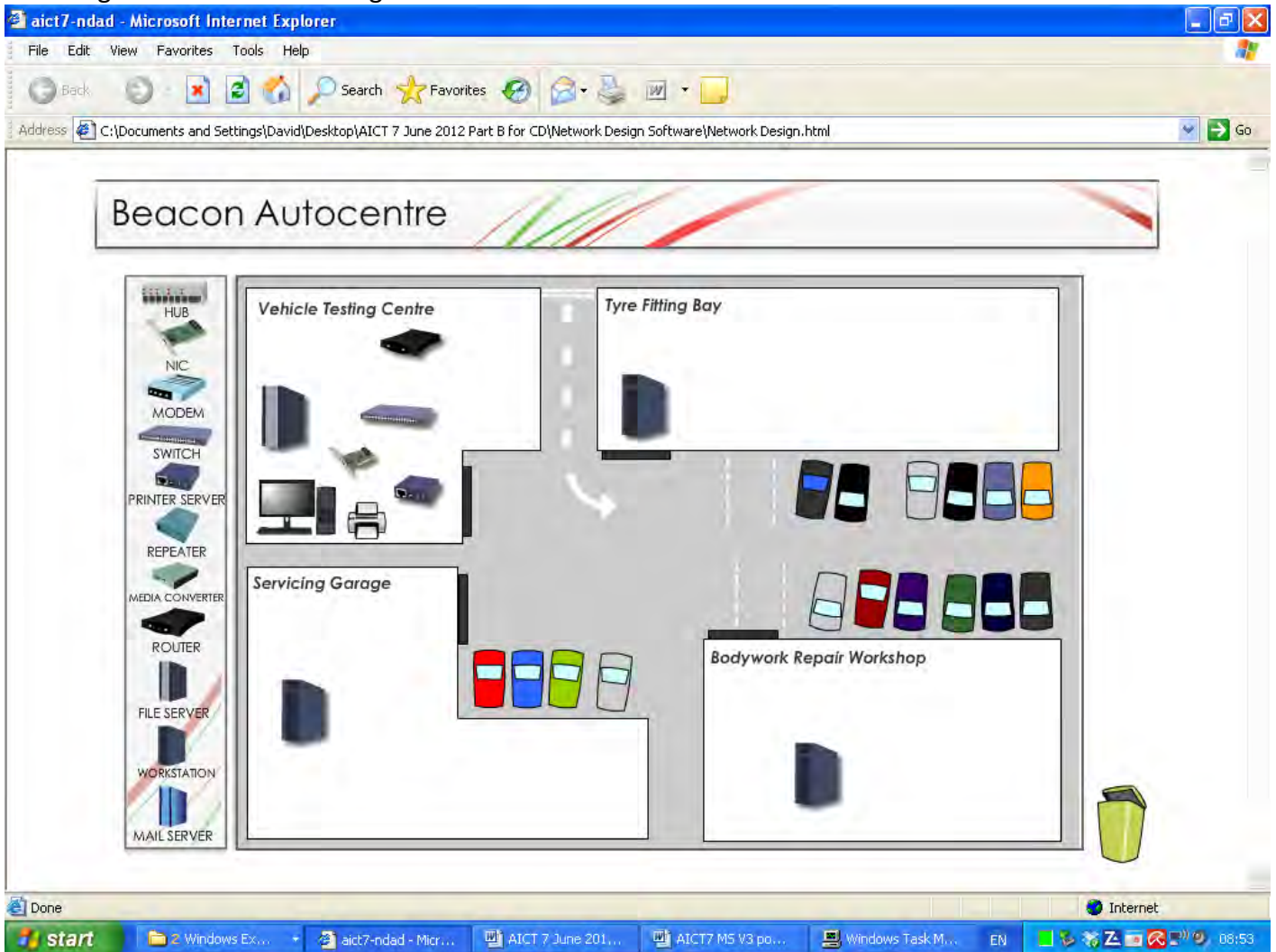
Screen shot clearly showing location of the following

- Switch in Vehicle Testing Centre (Condone Hub) 1
- Router in Vehicle Testing Centre 1

NOTE – Router could be used to connect local network and to the Internet if justified

- File server in Vehicle Testing Centre 1
- Printer server in Vehicle Testing Centre 1
- NIC in Vehicle Testing Centre and a workstation (could include NIC but not required as Workstation could include a NIC) in each of 1
 - Tyre Fitting Bay
 - Bodywork Repair Shop
 - Servicing Garage

Note – deduct one mark for each inappropriate component in an unsuitable location – ignore modem in Testing Centre



Choice of each physical component should be justified – other suitable answers may be acceptable

Switch will be used because they have to connect the 4 computers, file server and print server to network

1

Router will be used because they have to connect to the Internet 1

File server because – any one of: 1

- databases can be stored centrally and accessed from all stations
- only used by administrator to perform network tasks so more secure
- databases can easily be backed up from the file server

One printer server will manage printer in Vehicle Testing Centre to print receipts and reports 1

Existing computer will require a NIC and 3 more workstations to connect to network/switch 1

Note – A good justification of inappropriate component in an unsuitable location can gain a mark for both the component and the justification.

Task 2

[6 Marks]

Describe the advantages of using wireless communication infrastructures and the advantages of cable communication infrastructures. Justify the communication infrastructure you would recommend to connect the physical network components that you selected in Task 1.

Advantages and justification of wireless communication infrastructure

- less disruption and cost to business when installing / no need to dig up car park
- don't have to buy expensive cables
- cables can be very difficult to repair or replace after installation
- it is easier to connect mobile devices such as notebooks, mobile phones to a wireless network
- Don't have the health and safety issues of cables - customers tripping over them, interfering with tools / machinery

Advantages and justification of cable communication infrastructure

- less chance of interference with cable compared to wireless / signals can go through thick walls or walls with electric cables
- more difficult to intercept signals and possibly hack
- transmission rates can be more consistent

Any of the above points can be extended and gain extra marks for example:

Cable communication infrastructure is good because there is less chance of interference from other transmitting devices therefore transmission rates can be more consistent. Also it is more difficult to intercept signals and possibly hack a cable network compared to a wireless network.

However, I recommend that Beacon Autocentre use a wireless communication infrastructure to connect their network as they will not have to buy expensive cables but more importantly they will not need to have cables crossing the car park to link the separates sections of the business which would mean digging up the car park at great expense or having weather proofed cables high above the road.

Also they will not need to drill holes, lift ceiling tiles, etc... to connect the network so there will be far less disruption to the building and business when installing and if a cable develops a fault it will be difficult to locate and replace.

NOTE - The description of any of the points could be extended and gain an extra mark.

- | | |
|-------------|---|
| 5 – 6 marks | Candidates give a clear, coherent answer fully and accurately describing advantages of both wireless and cable communication infrastructures. They make a recommendation based on the advantages. |
| 3 – 4 marks | Candidates give a clear, coherent answer describing advantages of both wireless and cable communication infrastructures. They make a recommendation based on the advantages. |
| 1 – 2 marks | Candidates give a brief answer describing advantages of either wireless or cable communication infrastructures. |
| 0 marks | No appropriate response |

Task 3**[4 Marks]**

- (a) *Beacon Autocentre will be storing customers' personal data and will have to comply with current data protection legislation. They are going to ensure that the data is obtained lawfully and held securely. State two other principles of the Data Protection Act that will apply to the data being stored by Beacon Autocentre.*

Principles of the Data Protection Act will apply to the data stored by Beacon Autocentre are:

1. Personal data can only be used or disclosed for its intended purpose
2. Data must be adequate, relevant and not excessive
3. Data is up to date and accurate
4. Data is held for no longer than necessary
5. Customers can view and amend data if incorrect
6. Data can only be transferred outside EC to countries with adequate data protection

NOT

1. Data should be obtained lawfully
2. Security measures should be in place to prevent unauthorised access to the data

- (b) *Some of the workstations on the network will be located in areas where customers could have access. Describe two suitable security measures that Beacon Autocentre could implement to protect their data.*

Security measures that could be implemented to minimize the risk of data being stolen include:

- Usernames, access rights and passwords to access system
- Encrypt sensitive customer data
- Workstations automatic locking if not used for a short period of time
- Biometric access to workstations such as finger print scanner

NOTE - NOT physical measures such as key pad entry or CCTV as unsuitable in this scenario.

END – THE RECOMMENDATION

Task 4 [2 Marks]

Describe why it is important for network administrators to use a standard naming convention.

It is important because users of the system will be able to recognise computer, printer and user names when selecting from lists (1) and other or future administrators working on the network will be able to recognise and also create objects that follow the conventions (1).

Task 5 [2 Marks]

One rule often applied to naming conventions is that objects should not contain certain disallowed characters, for example, a colon. Explain why this is a sensible rule.

Certain characters should not be included in names of objects as the operating system might use these characters for other purposes such as backslash is used to separate directories in a directory path.

Describe one other rule that you would recommend when naming objects to be used in the network.

There will be a minimum name length and a maximum name length for example 1 and 15

There will be reserved words that cannot be used.

Don't use meaningless/generic names like user1, user2, etc ...

Don't use spaces as these might be use delimiters by the network software or the operating system

Use capital letters to separate words in a multi-word name

Task 6 [2 Marks]

Decide on a naming convention for the login names of the current users of the network given below and explain your reasons for the naming convention that you have chosen.

One mark for sensible naming convention related to user's actual name and avoiding special characters apart from the period that will allow an increasing number of unique users to be created

For example Brian.Jones and Bryony.Jones are acceptable - NOT user1, user2 etc....

One mark for reason - The administrator to be able to identify users in future OR help users remember their login names.

OR

One mark for a convention that will cope with identical surnames and similar forename or similar surnames and identical forenames.

For example Bryony Jones and Brian Jones or Marion Servini and Michael Servini

One mark for reason – login names must be unique and some people will have similar or identical names so will need to uniquely identify these users.

OR

One mark for a convention that will cope with punctuation or numbers in name

For example Henry Taylor-Moore (or Davies Love III)

One mark for reason – the hyphen may be a disallowed character.

Task 7**[2 Marks]**

Decide on login names for the users that are going to be created for Beacon Autocentre's network.

Two marks for 7 suitable user names

One mark for less than 7 suitable user names NOTE TaylorMoore cannot have a hyphen

Examples:

Bryony.Jones

Brian.Jones

Henry.TaylorMoore

Helen.Servini

Michael.Servini

Han.Chin

George.Davies

Task 8**[2 Marks]**

Decide on names for the computers that are going to be created for Beacon Autocentre's network

Two marks for 4 suitable computer names

One mark for less 4 suitable computer names

Examples (no spaces):

TestingCentre

RepairShop

ServicingGarage

TyreBay

Task 9**[1 Mark]**

Decide on names for the four groups that are going to be created for Beacon Autocentre's network

One mark for 4 suitable group names

Examples (no spaces)::

Management - owner, the secretary and the accountant

Mechanics

SprayPainters

TyreFitters

Task 10**[1 Mark]**

One mark for 2 suitable shared folder names

Examples:

CompletedWork

VehicleTestingCentre

Task 11**[4 Marks]**

State the permissions that each group should have to the shared folder that contains the Completed Work Database. Give reasons for your choices; the permissions should allow The Objectives to be achieved.

The reasons for the permissions are important as credit will be gained for setting the permissions in later tasks.

One mark for each group's permission (must be explained in terms of standard software terms such as 'Read' or 'Full' NOT user 'should be able to add data or view data' type answers) correctly described **with** reason.

The group that contains the mechanics in the Servicing Garage will need Full Permissions for objective 3 '*the mechanics in the Servicing Garage to update the Completed Work Database*'.

The group that contains the painters in the Bodywork Repair Shop will need Full Permissions for objective 4 '*the spray painters in the Bodywork Repair Shop to update the Completed Work Database*'.

The group that contains the Tyre Fitters in the Tyre Fitting Bay will need Full Permissions for objective 5 '*the Tyre Fitters in the Tyre Fitting Bay to update the Completed Work Database*'.

The group that contains the owner, the secretary and the accountant will need Full Permissions for objective 7 '*the owner, the secretary and the accountant to save created database reports for both the databases*'.

Examples:

Mechanics – **Full** to satisfy objective 3 the mechanics in the Servicing Garage to update the Completed Work Database

SprayPainters – **Full** to satisfy objective 4 the spray painters in the Bodywork Repair Shop to update the Completed Work Database

TyreFitters – **Full** to satisfy objective 5 the tyre fitters in the Tyre Fitting Bay to update the Completed Work Database

Management – **Full** to satisfy objective 7 the owner, the secretary and the accountant to save created database reports for both the databases

NOTE – All permissions correct **without** reasons award one mark total

Task 12**[4 Marks]**

State the permissions that each group should have to the shared folder that contains the Vehicle Testing Centre Database. Give reasons for your choices; the permissions should allow The Objectives to be achieved.

The reasons for the permissions are important as credit will be gained for setting the permissions in later tasks.

One mark for each group's permission (must be explained in terms of standard software terms such as 'Read' or 'Full' NOT user 'should be able to add data or view data' type answers) correctly described **with** reason.

The group that contains the owner, the secretary and the accountant will need Full Permissions for objective '*the owner and the secretary in the Vehicle Testing Centre to update the Vehicle Testing Centre Database*'.

OR

The group that contains the owner, the secretary and the accountant will need Full Permissions for objective '*the owner, the secretary and the accountant to save created database reports for both the databases*'

The group that contains the mechanics in the Servicing Garage will have no permissions.
The group that contains the painters in the Bodywork Repair Shop will have no permissions.
The group that contains the Tyre Fitters in the Tyre Fitting Bay will have no permissions.

Condone Read permission for above groups

The 'Everyone' group should be deleted but condone if not deleted.

NOTE – All permissions correct without reasons award one mark total

Examples:

Management – **Full** to satisfy objective 6 the owner and the secretary in the Vehicle Testing Centre to update the Vehicle Testing Centre Database

Mechanics – **No** Permissions as not required to view or update this database

SprayPainters – **No** Permissions as not required to view or update this database

TyreFitters – **No** Permissions as not required to view or update this database

Task 13

[2 Marks]

Two marks for the evidence requested of 7 users created correctly **suitable** login names.
One mark for the evidence requested of less than 7 users created correctly **suitable** login names.

Example Screen Shot 13a



Example Screen Shot 13b



Task 14

[4 Marks]

One mark for evidence of each group created correctly with a **suitable** name. Deduct one mark for any additional groups created.

Example Screen Shot 14

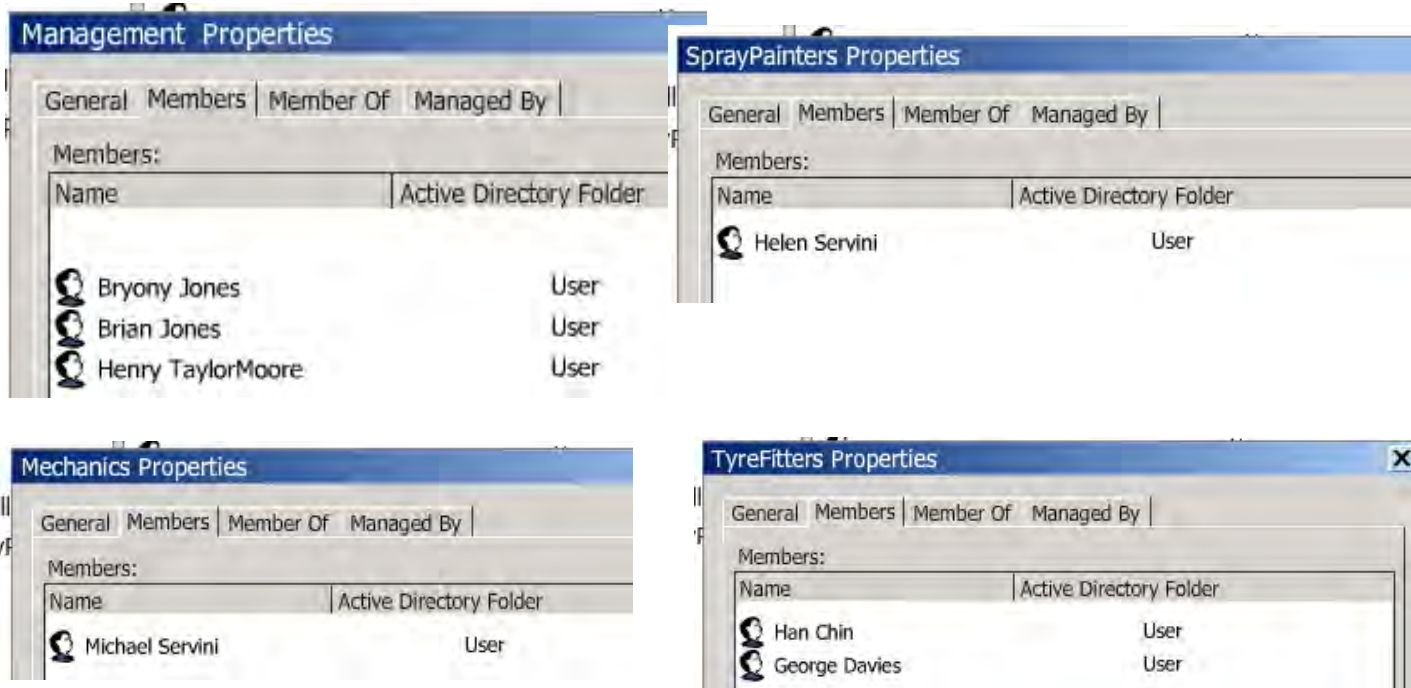


Task 15

[4 Marks]

One mark each for evidence of **all** users correctly added to **each** of the four groups.

Example Screen Shots 15



Task 16

[5 Marks]

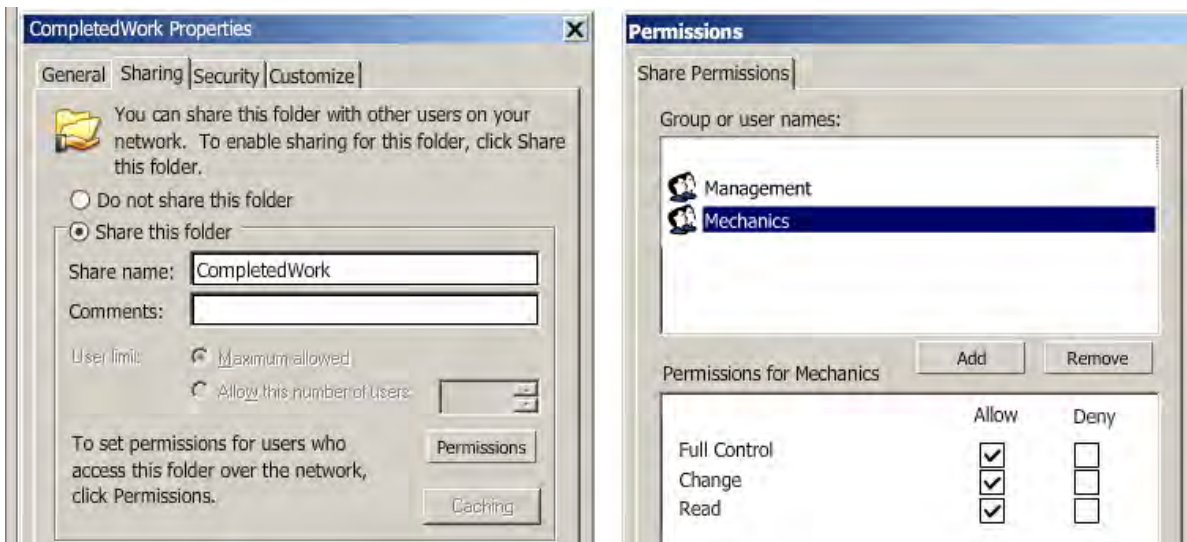
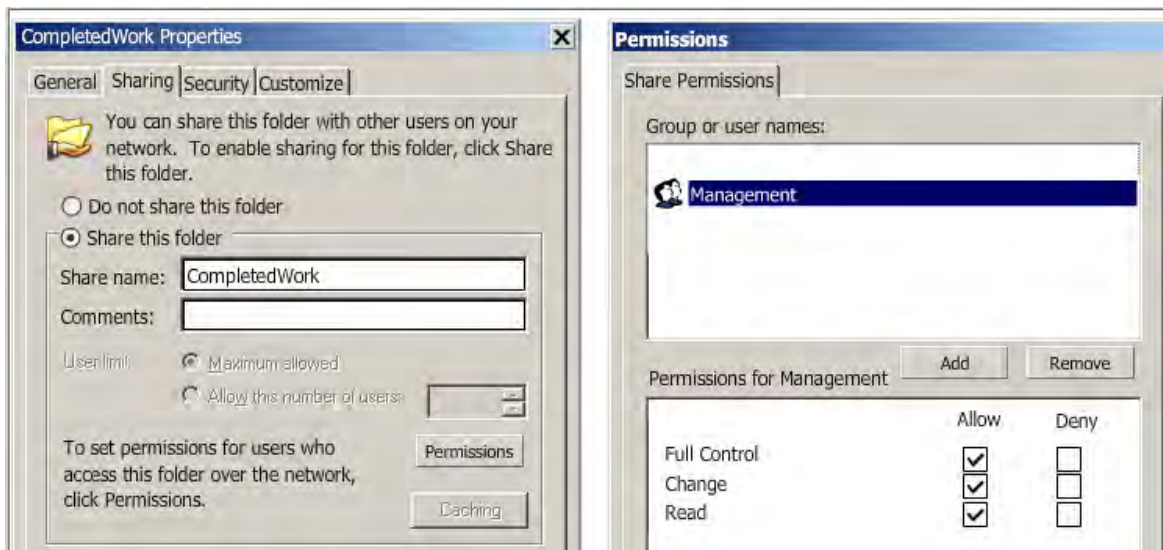
Create the shared folder to be used to store the Completed Work Database. Name the folder and set the Permissions for each group.

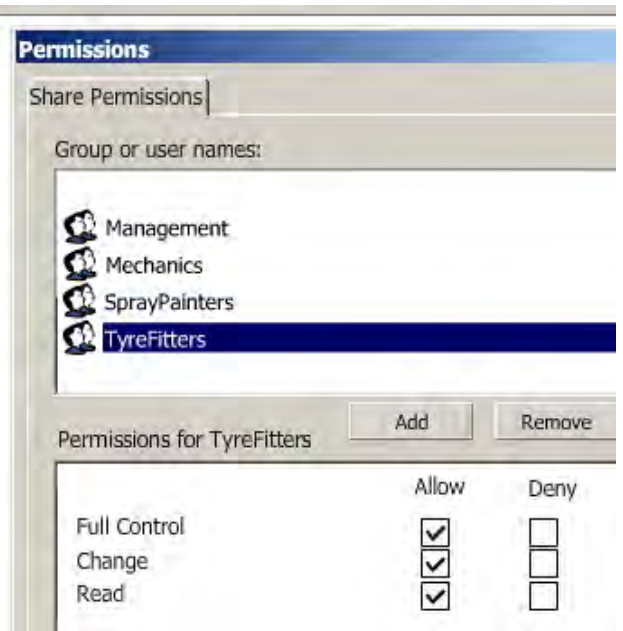
One mark for evidence of folder correctly created

One mark for evidence of correctly adding **each** group and setting correct share permissions as stated in Task 12.

The group that contains the mechanics in the Servicing Garage will need Full Permissions
The group that contains the painters in the Bodywork Repair Shop will need Full Permissions
The group that contains the Tyre Fitters in the Tyre Fitting Bay will need Full Permissions
The group that contains the owner, the secretary and the accountant will need Full Permissions

Example Screen Shot 16





Task 17

[2 Marks]

Create the shared folder to be used to store the Vehicle Testing Centre Database. Name the folder and set the permissions for each group.

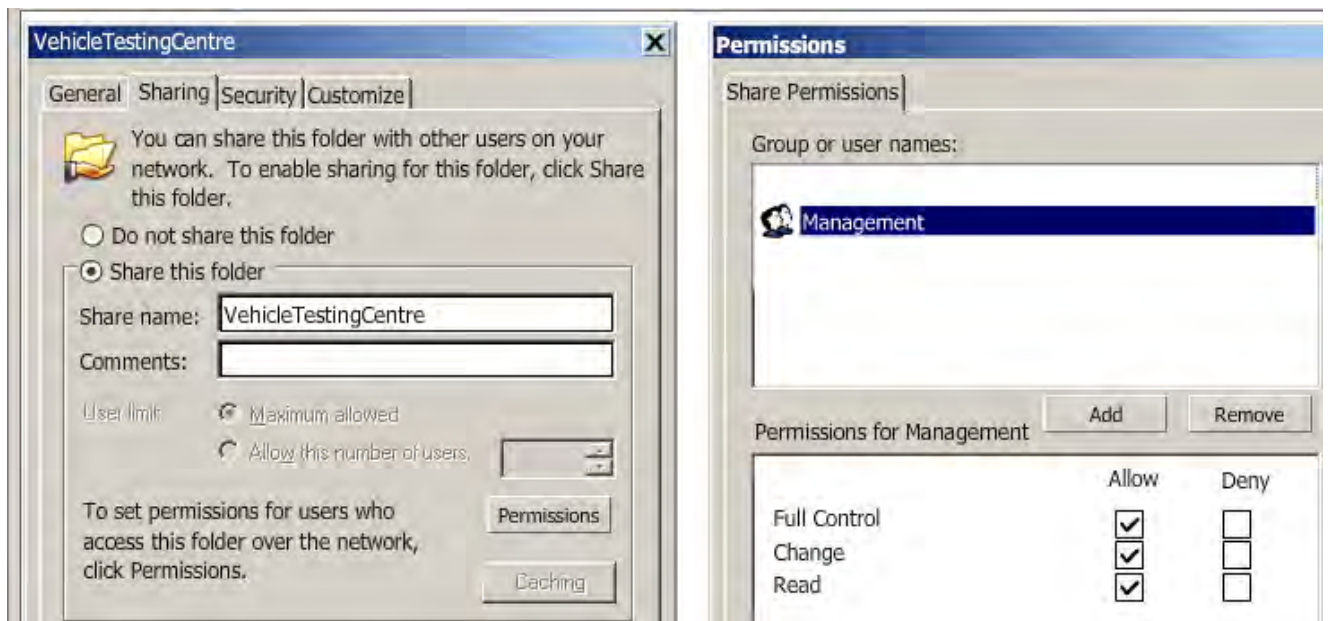
One mark for evidence of folder correctly created

One mark for evidence of correctly adding the group that contains the owner, the secretary and the accountant will need Full Permissions

NOTE – deduct a mark if any other group are given any permissions (Condone Read for other groups)

Ignore the 'Everyone' group

Example Screen Shot 17



Task 18

[2 Marks]

Two marks for evidence of **four** computers correctly created, named and located.
One mark for evidence of less than four computers correctly created, named and located.

Example Screen Shot 18



Task 19

[1 Mark]

One mark for evidence of a suitable printer name and suitable share name located in the **Vehicle Testing Centre**, set as default and for printing a test page.

Example Screen Shot 19



END – THE IMPLEMENTATION



WJEC
245 Western Avenue
Cardiff CF5 2YX
Tel No 029 2026 5000
Fax 029 2057 5994
E-mail: exams@wjec.co.uk
website: www.wjec.co.uk