

**OXFORD CAMBRIDGE AND RSA EXAMINATIONS
ADVANCED GCE**

G055/IC

**APPLIED INFORMATION AND
COMMUNICATION TECHNOLOGY**

Networking Solutions

INSTRUCTIONS FOR CANDIDATES

To be opened on receipt

THURSDAY 23 JUNE 2011: Morning

DURATION: 1 hour 30 minutes

SUITABLE FOR VISUALLY IMPAIRED CANDIDATES

INSTRUCTION TO EXAMS OFFICER/INVIGILATOR

- **Do not send this Insert for marking; it should be retained in the centre or destroyed.**

PRE-RELEASE TASKS – INSTRUCTIONS FOR CANDIDATES

Read the attached case study and these instructions carefully, then carry out the tasks detailed below. There are two types of task.

In Task 1 you will produce notes that will help you to answer questions in the examination for this unit. The other tasks will be marked and will contribute up to 30 of the 100 marks available for this unit.

You will need your completed tasks when you take the examination for this unit.

The work produced in response to the pre-release tasks must be submitted to your teacher when it is completed. The work must be presented as a hard copy.

It is not acceptable for you to copy large parts of material from other sources as the tasks require you to apply your knowledge to the case study. Any books, information leaflets or other materials (e.g. videos, software packages or information from the internet) which you have used to help you complete this work must be clearly acknowledged in the work itself. To present material copied from books or other sources without acknowledgement will be regarded as deliberate deception.

You MUST NOT submit any material other than your response to the pre-release tasks.

The work must be collated so that it is presented in task order.

Each page of the work must be marked clearly with your name, Centre number and task number.

When you have completed the tasks you must sign and date a Candidate Authentication Statement. You must then ask your teacher to sign to confirm that the work is your own.

CASE STUDY

The Recycled Garden Company Ltd (RGC) is a medium sized enterprise located in central Wales. The company manufactures and sells garden products, made from recycled plastic, to customers all over Europe.

RGC is expanding and the managing director, Ms Green, has conducted a review of the current ICT strategy. She feels that a network is needed to enable the company to become more efficient in its operation. She has approached you for technical advice on how to proceed.

RGC has a managing director and twenty-three employees:

- **a sales manager and four sales staff, responsible for sales in Britain and in Europe**
- **a production manager, two warehouse and two delivery staff**
- **eight manufacturing workers**
- **two designers/engineers**
- **an accounts manager**
- **a company buyer**
- **an administrator.**

Ms Green has the following requirements for networked computers:

- **a wireless-enabled laptop with spreadsheet and general office software installed for each of the sales staff**
- **one PC with spreadsheet and general office software installed for the sales manager**
- **one PC with stock control software installed for the production manager**
- **one PC with stock control software installed for the use of the warehouse and delivery staff**
- **one PC with CAD software installed for each of the designers/engineers**
- **one PC with accounting software, stock control software and general office software installed for each of the following:**
 - **the accounts manager**
 - **the company buyer**
 - **the administrator**
- **one PC with general office software installed for the managing director**
- **a company-wide internet connection available to all computers on the network.**

As part of the strategy, RGC will have a website which will be created, maintained and hosted by a local web design company. Customer orders for recycled garden products will be taken over the internet or by telephone. Orders for manufacturing supplies will be placed by RGC over the internet or by telephone.

When a customer order is taken for recycled products over the telephone, it must be confirmed by producing an invoice and delivery note. A copy of the invoice is sent to the customer.

When an order is placed for supplies by RGC over the telephone, a purchase order will often be required by the supplier.

Fig. 1 on page 8 shows the layout of the ground floor of the headquarters building of RGC. The building has two storeys at one end with all office space, except the production manager's office, situated on the first floor, shown in Fig. 2 on page 9.

BLANK PAGE

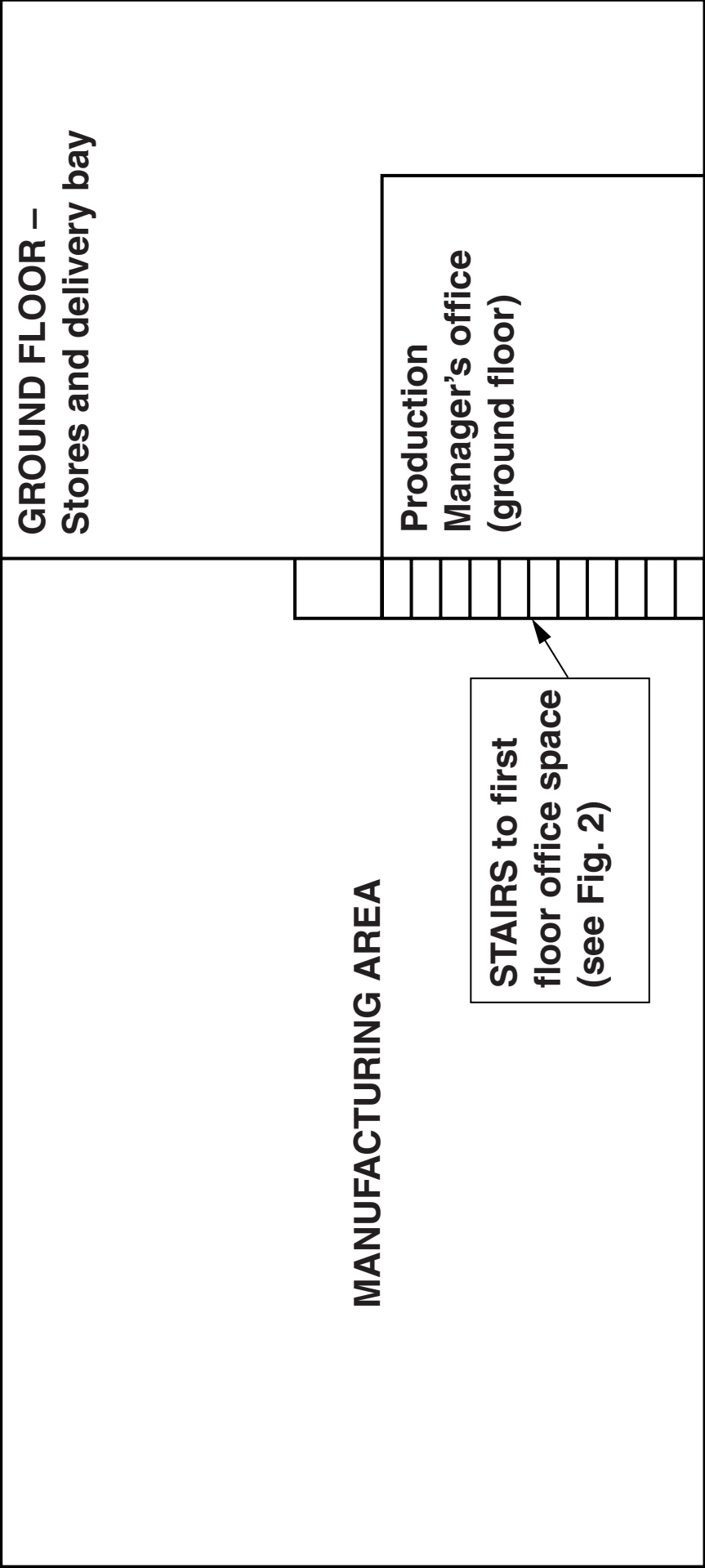


Fig. 1

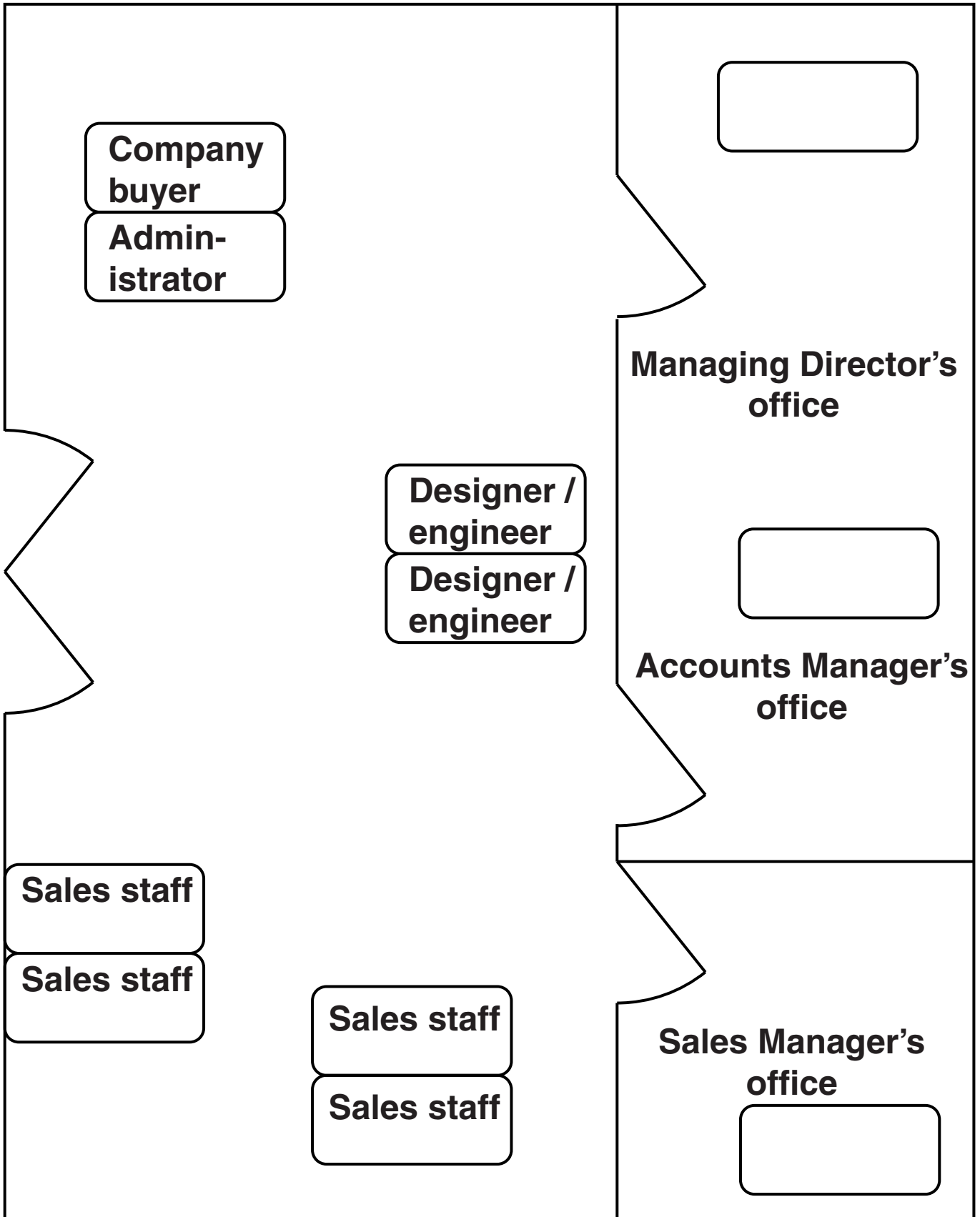


Fig. 2

TASK 1

The managing director of Recycled Garden Company Ltd (RGC) has asked for your advice on how to set up and use its new network including how to connect it to the internet to provide broadband access for all computers.

Carry out your own research and make notes, to be used in discussion with RGC, about the planning of its new network. Your notes should include:

- how RGC will be able to share a range of types of resources and the potential drawbacks associated with introducing a network**
- the WAN services that will be available to RGC, how they could be used and the benefits of their use**
- the use of a star network topology and the reasons why this might/might not be a suitable topology for RGC**
- how RGC's data can be protected on the network**
- the ways in which RGC could make use of an intranet and an extranet, detailing the advantages and disadvantages of each**
- peer-to-peer and client server networks and the advantages and disadvantages to RGC of using each type of network**
- the devices, media and software that RGC could use to share an internet connection, how they work and why each would be chosen**
- the functions and benefits of the different types of server that RGC might need**
- the protocols that RGC may need to use, what they are and why they are needed.**

TASK 2

One option is to follow a star topology for the network.

Use the diagrams in Fig. 1 and Fig. 2 to produce a **PHYSICAL** network diagram that shows a star network relevant to RGC. Your diagram should be labelled to show where computers, servers, connecting equipment and other hardware will be sited and how it will all be connected together.

For each computer, add a label to show the type of software that will be installed. [10]

Using the table headings given in Table 1, list the types of **SOFTWARE** identified in your diagram and, for each type of software, justify why it is installed on a particular computer.

TYPES OF SOFTWARE (ON DIAGRAM)	JUSTIFICATION FOR INSTALLATION

Table 1

[8]

Briefly evaluate the method(s) you used to complete this task. [3]

TASK 3

New computers will need to be added to the RGC network from time to time.

Write a short article for RGC to explain how to configure a computer that is connected to their network to enable it to access the internet and the World Wide Web.

The work you produce for Task 3 MUST NOT exceed 250 words and you should include a word count.

The quality of your written communication will be assessed through this task. [9]



Copyright Information

OCR is committed to seeking permission to reproduce all third-party content that it uses in its assessment materials. OCR has attempted to identify and contact all copyright holders whose work is used in this paper. To avoid the issue of disclosure of answer-related information to candidates, all copyright acknowledgements are reproduced in the OCR Copyright Acknowledgements Booklet. This is produced for each series of examinations and is freely available to download from our public website (www.ocr.org.uk) after the live examination series.

If OCR has unwittingly failed to correctly acknowledge or clear any third-party content in this assessment material, OCR will be happy to correct its mistake at the earliest possible opportunity.

For queries or further information please contact the Copyright Team, First Floor, 9 Hills Road, Cambridge CB2 1GE.

OCR is part of the Cambridge Assessment Group; Cambridge Assessment is the brand name of University of Cambridge Local Examinations Syndicate (UCLES), which is itself a department of the University of Cambridge.