

**ADVANCED GCE  
 HEALTH AND SOCIAL CARE**

**F921**

Unit 12: Anatomy and Physiology in Practice

**MONDAY 28 JANUARY 2008**

Afternoon

Time: 1 hour 30 minutes

Candidates answer on the question paper

**Additional materials:** No additional materials are required



Candidate  
Forename

Candidate  
Surname

Centre  
Number

--	--	--	--	--

Candidate  
Number

--	--	--	--

**INSTRUCTIONS TO CANDIDATES**

- Write your name in capital letters, your Centre Number and Candidate Number in the boxes above.
- Use blue or black ink. Pencil may be used for graphs and diagrams only.
- Read each question carefully and make sure that you know what you have to do before starting your answer.
- Answer **all** the questions.
- Do **not** write in the bar codes.
- Do **not** write outside the box bordering each page.
- Write your answer to each question in the space provided.

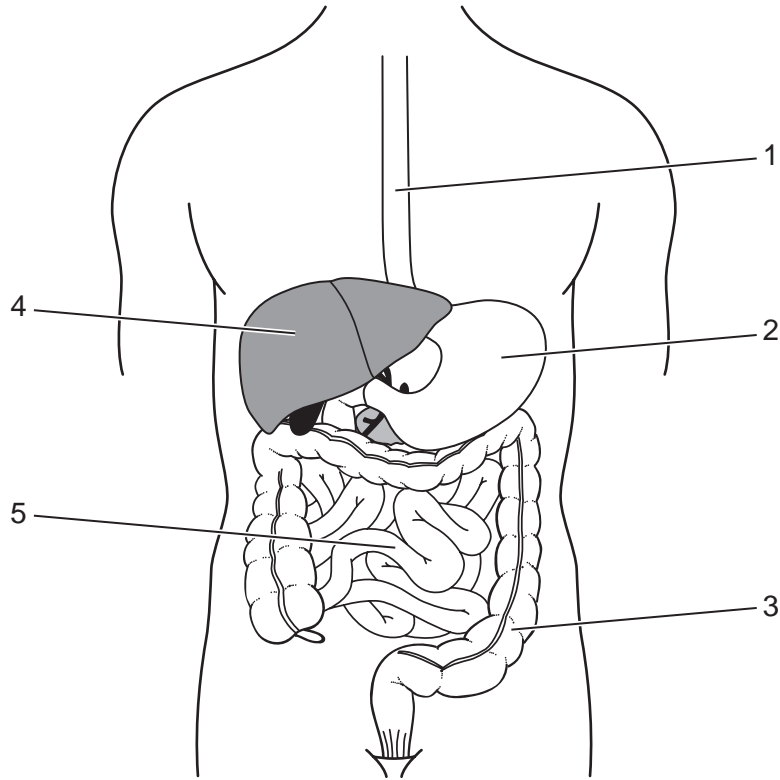
**INFORMATION FOR CANDIDATES**

- The number of marks for each question is given in brackets [ ] at the end of each question or part question.
- The total number of marks for this paper is **100**.
- You will be awarded marks for the quality of written communication where an answer requires a piece of extended writing.

**FOR EXAMINER'S USE**

1	
2	
3	
4	
5	
<b>TOTAL</b>	

This document consists of **12** printed pages.



**Digestive system**

**(a)** Identify each of the structures labelled 1 – 5 in the diagram.

- 1.....
- 2.....
- 3.....
- 4.....
- 5.....[5]

**(b)** Describe **two** functions of each part of the digestive system given below:

- Pancreas
- Liver
- Stomach

.....

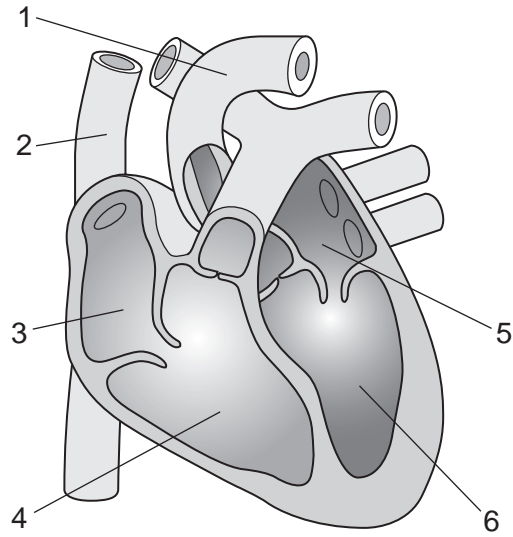
.....

.....

.....

.....





**Heart**

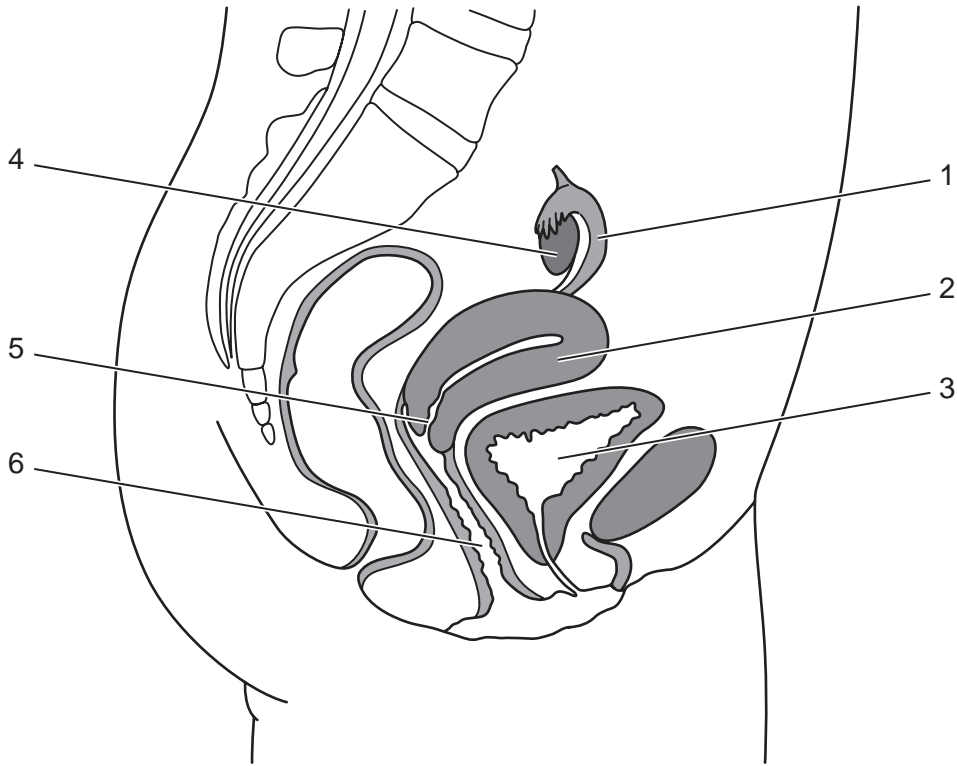
**(a)** Identify each of the structures labelled 1 – 6 in the diagram.

- 1.....
- 2.....
- 3.....
- 4.....
- 5.....
- 6.....[6]









**Female reproductive system**

**(a)** Identify each of the structures labelled 1 – 6 in the diagram.

- 1.....
- 2.....
- 3.....
- 4.....
- 5.....
- 6.....[6]

**(b)** Identify **two** hormones that are involved in the menstrual cycle.

- 1.....
- 2.....[2]





5 Lung disease is one of the biggest killers in the United Kingdom.

Describe the possible causes and assess the effects of lung disease on individuals in the United Kingdom.

.....

.....

.....

.....

.....

.....

.....

.....

.....

.....

.....

.....

.....

.....

.....

.....

.....

.....

.....

.....

.....

.....

Ruled area consisting of 25 horizontal dotted lines for writing.

.....  
.....  
.....  
.....  
.....  
.....  
.....  
.....

[30]

[Total: 30]