

SPECIMEN MATHEMATICS PAPER:

1. $0.12 \times 1000 = \underline{120}$

$\sqrt{64} = \underline{8}$

$7^3 = \underline{343}$

$\sqrt[3]{27} = \underline{3}$

$14^2 = \underline{196}$

$\frac{90}{165} = \underline{\frac{6}{11}}$

$\frac{7}{12} \times 96 = \underline{56}$

$0.6 \times 55 = \underline{33}$

$0.2 \times 0.3 \times 0.4 \times 250 = \underline{6}$

2. Calculator displays

$\frac{1}{30} = \underline{0.0333333333}$

3. $3 + 12 + 30 + 30 + 29$

$= \underline{104 \text{ mm}}$ (you should get between 100mm and 108mm)

$= \underline{10.4 \text{ cm}}$

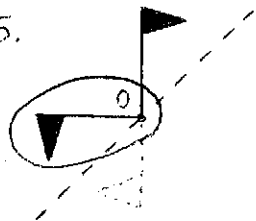
$= \underline{0.104 \text{ m}}$

$= \underline{1,300 \text{ m}}$ in real life)

(Adjust answers accordingly)

4. Symmetry order 5

5.



6. 8,040

7. $8386 \div 14 = \underline{599}$

8. (a) $\frac{6}{9} = \underline{\frac{2}{3}}$ (b) $\frac{3}{9} = \underline{\frac{1}{3}}$

9. $6 \times 4 \div 9 = \underline{15}$

$7 \times 8 = 28 \times 2$

$(18 \div 12) \div 6 = \underline{5}$

10. $(94 + 78) \times 2 = \underline{344 \text{ m}}$

11. (a) 28 cm (b) 44 cm

12. $\frac{1}{2} \times 6 \times 8 = \underline{24 \text{ cm}^2}$

13. (a) $5 - (-5) = \underline{10^\circ \text{C}}$

(b) $\frac{7}{7} = \underline{1^\circ \text{C}}$

14. 558

15. $930 \div 5 = 186$

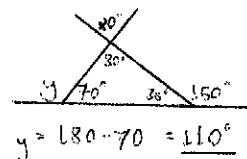
Horses are 182, 184, 186, 188, 190, 188, 190

16. $5 \text{ mins} = 30^\circ$

Angle = $5 \times 30 + \frac{30}{4} = \underline{157.5^\circ}$

17. (a) Reflex

(b)



18. $36 \times 24 = \underline{864}$

19. $2 \square 7$

$\square 1 5$

$+ \square 4 \square$

$\underline{2 \square 8 1}$

20. $36 = \underline{5 + 31} = \underline{7 + 29}$

$= \underline{13 + 23} = \underline{17 + 19}$

21. 59

22. (a) 5 cm (b) 65.5 cm²

(c) Dimensions 4cm x 5cm x 6cm 3cm
Volume = 120 cm³

(d) Dimensions 2cm x 3cm x 4cm cm