

**JUNIOR LYCEUM ANNUAL EXAMINATIONS 2002**  
Educational Assessment Unit - Education Division

**FORM 1**

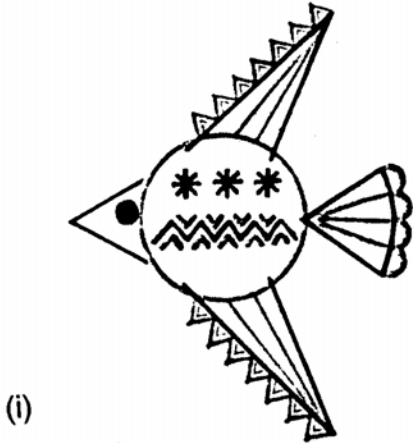
**TEXTILES STUDIES (NEEDLECRAFT)**

**TIME: 1hr 30mins**

Name: \_\_\_\_\_

Class: \_\_\_\_\_

1.



These pictures were created by using **geometrical shapes**. **Embroidery stitches** were used on the design.

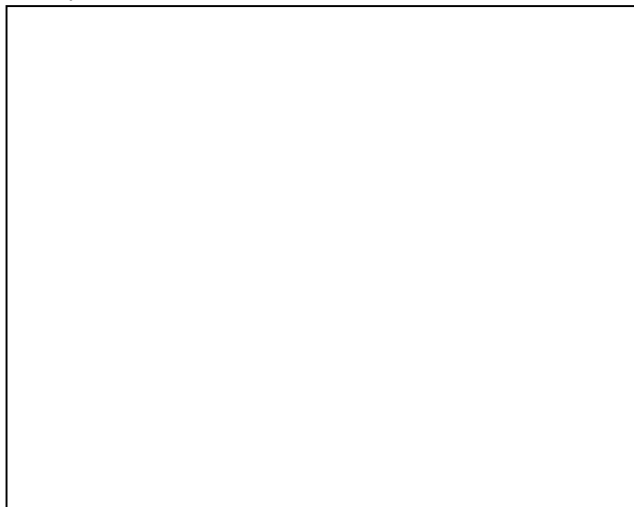
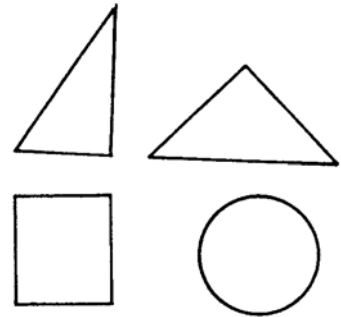
a. Name **two** embroidery stitches used on each picture

(i) \_\_\_\_\_  
\_\_\_\_\_

(ii) \_\_\_\_\_  
\_\_\_\_\_

(4 marks)

b. You are going to make a wall hanging for your sister's nursery. Create a suitable design using these geometrical patterns. (*The shapes can be used more than once*)



(5 marks)

c. List **four** colours used on the collage.

(i) \_\_\_\_\_

(iii) \_\_\_\_\_

(ii) \_\_\_\_\_

(iv) \_\_\_\_\_

(2 marks)

d. Name **two** different types of fabrics used.

(i) \_\_\_\_\_

(ii) \_\_\_\_\_

(2 marks)

e. List **two** other items used to decorate the wall hanging.

(i) \_\_\_\_\_

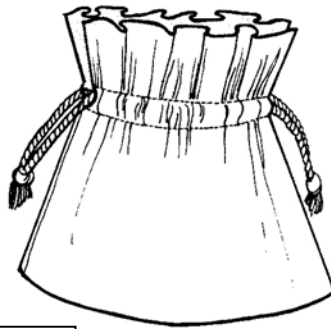
(ii) \_\_\_\_\_

(2 marks)

2. The bag in the picture is made from strong cotton fabric.

a. Name the type of **fabric** suitable to make the bag

**Fabric:** \_\_\_\_\_



(1 mark)

b. Draw the symbol for cotton.



(1 mark)

c. Why is cotton suitable to make the bag? Name **two** reasons.

(i) \_\_\_\_\_

(ii) \_\_\_\_\_

(4 marks)

d. The correct tools must be used to sew the bag. List the tools for:-

(i) **Measuring** and **marking** the fabric.

**Measuring** \_\_\_\_\_

**Marking** \_\_\_\_\_

(2 marks)

(ii) **Cutting** and **sewing** the fabric

**Cutting** \_\_\_\_\_

**Sewing** \_\_\_\_\_

(2 marks)

e. Name the type of **seam** used to sew the bag.

(i) **Seam** \_\_\_\_\_

(1 mark)

(ii) Describe how to work this seam. (*Use sketches*)

<b>Method</b>	<b>Sketches</b>
a. _____	
b. _____	
c. _____	

(2, 3 marks)

(iii) Name a tacking stitch used.

**Tacking stitch** \_\_\_\_\_ (1 mark)

f. Name and draw **one** method of **neatening** the edges of this seam.

<b>Name</b>	<b>Sketch</b>
(i) _____	

(2 marks)

g. Cotton is an easy care fabric. Draw the care label symbols for:

<b>Washing</b>	<input type="checkbox"/>
<b>Hang dry</b>	<input type="checkbox"/>
<b>Ironing</b>	<input type="checkbox"/>

(3 marks)

h. Cotton and linen crease badly. Describe a simple experiment showing that these fabrics crease.

---

---


---

---

---

(5 marks)

i. Different fabrics react differently when soaked in water. Underline the correct reaction (*Result*) for cotton

The water stays on the surface  - 'repellent'

The water is absorbed slowly  - 'absorbs slowly'

The water disappears immediately  - 'very absorbent' (1 mark)

3. All colours begin from the use of three basic colours. They are known as the primary colours.

a. Name the **three** primary colours.

(i) \_\_\_\_\_

(ii) \_\_\_\_\_

(iii) \_\_\_\_\_

(3 marks)

b. **Two** primary colours mixed together make secondary colours.

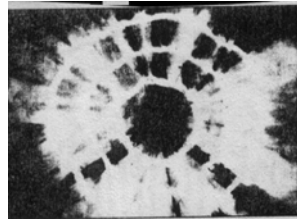
Red and yellow make \_\_\_\_\_

Yellow and blue make \_\_\_\_\_

Red and blue make \_\_\_\_\_

(3 marks)

c. The fabric was tie dyed. Describe briefly how the fabric was dyed.



(i) \_\_\_\_\_

(ii) \_\_\_\_\_

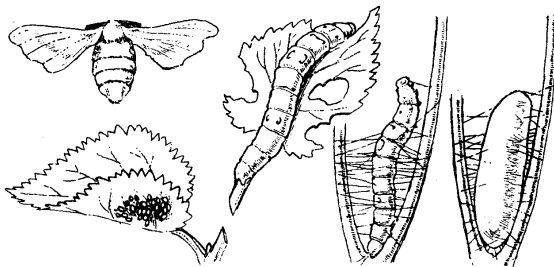
(iii) \_\_\_\_\_

(iv) \_\_\_\_\_

(v) \_\_\_\_\_

(5 marks)

4. **Silk** is a strong, soft, lustrous (*shiny*) fabric. The pictures below show how the silk moth produces the silk thread.



a. **Sort each of the phrases in order, then fit them on the flow diagram.**

Silkworm stops eating and spins cocoon.

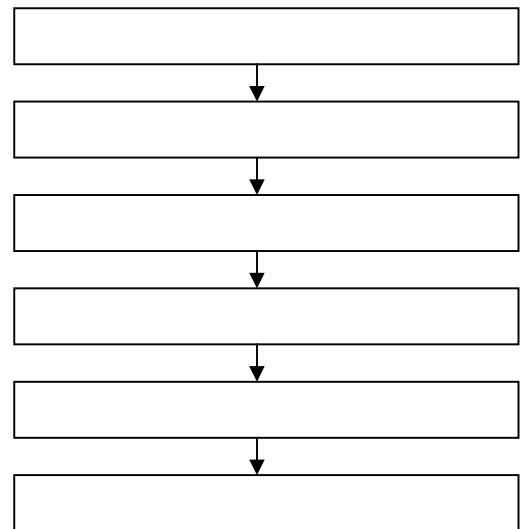
Eggs hatch into silkworms.

Silk moth lays eggs.

Silkworm feeds for five weeks.

Silk thread spun and woven into fabric.

Silkworm killed and silk taken from the cocoon.



(6 marks)

b. Why do you think silk is an expensive fabric?

\_\_\_\_\_ (1 mark)

c. List **three** items made from silk.

(i) \_\_\_\_\_ (iii) \_\_\_\_\_  
(ii) \_\_\_\_\_ (3 marks)

d. Draw the ironing **symbol** for pressing silk.

**Symbol**  (1 mark)

5. "Press as you sew" is a good motto while sewing.

a. Name **two** different types of irons.

(i) \_\_\_\_\_ (ii) \_\_\_\_\_ (2 marks)

b. List **two** other pressing equipment and state their use.

(i) **Name** \_\_\_\_\_ (ii) **Name** \_\_\_\_\_  
**Use** \_\_\_\_\_ **Use** \_\_\_\_\_  
\_\_\_\_\_ (2, 2 marks)

c. Your mother bought a new iron. When she started to use it, she found the thermostat was faulty.

(i) What is the use of the thermostat in the iron?

\_\_\_\_\_ (1 mark)

(ii) Should she return it to the shop after she has used it?

\_\_\_\_\_ (1 mark)

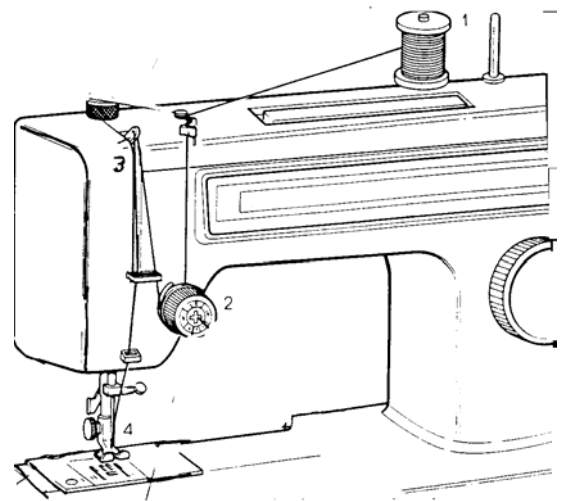
(iii) List **two** steps she should take as a consumer in this situation.

- \_\_\_\_\_
- \_\_\_\_\_

\_\_\_\_\_ (4 marks)

6. It is important to thread the sewing machine correctly.  
 a. Using the sewing machine in the picture, describe how the thread passes from the spool pin to the needle. (4 marks)

1. \_\_\_\_\_
2. \_\_\_\_\_
3. \_\_\_\_\_
4. \_\_\_\_\_



- b. The sketches below show how the bobbin and bobbin case are prepared to be put into the sewing machine. **Number** the process in the correct order.




Hold the wound bobbin between the thumb and two fingers of your right hand with the thread on top leading away from you.

Hold the bobbin case between the thumb and forefinger of your left hand with the slot in the edge facing up.

Insert the bobbin into the case, pull the thread into the slot then draw under the spring until it enters the delivery eye.

(6 marks)

- c. Name **two** sewing machine attachments and give their use.

(i) **Sewing machine attachment** \_\_\_\_\_

**Use** \_\_\_\_\_

(ii) **Sewing machine attachment** \_\_\_\_\_

**Use** \_\_\_\_\_

(2, 2 marks)

7. Uniforms should be worn for school.

a. List **three** advantages of having a uniform for school.

(i) \_\_\_\_\_

(ii) \_\_\_\_\_

(iii) \_\_\_\_\_

(3 marks)

b. Your school has decided to change your summer uniform. Design an outfit suitable for summer.

(2 marks)

c. Suggest a fabric suitable for each item of your winter school uniform.

**Garment**

**Fabric**

i) **Skirt**

\_\_\_\_\_

ii) **Blouse**

\_\_\_\_\_

iii) **Cardigan (jersey)**

\_\_\_\_\_

iv) **Blazer**

\_\_\_\_\_

(4 marks)